

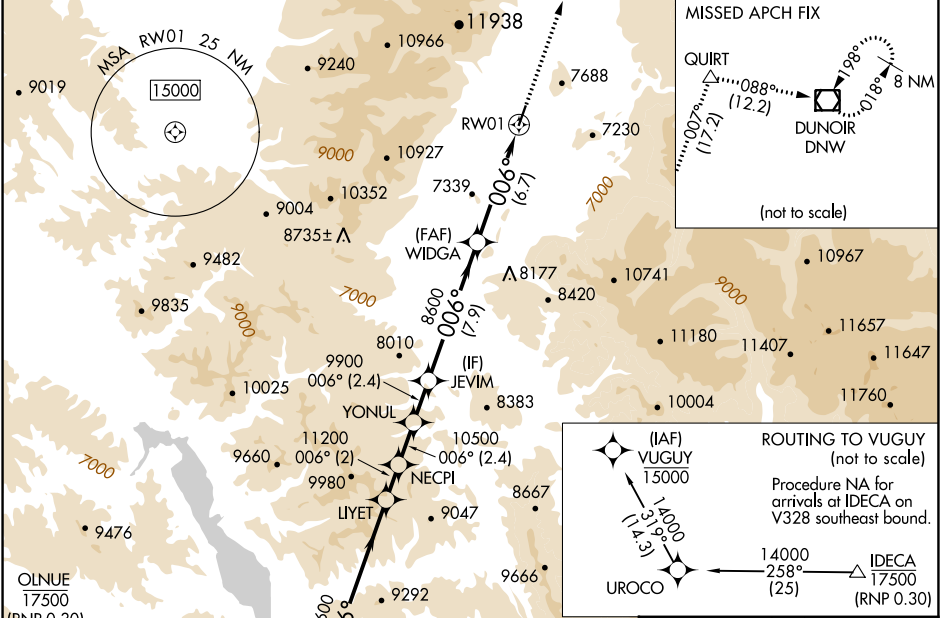
APP CRS	Rwy Idg	6300
006°	TDZE	6431
	Apt Elev	6451

RNAV (RNP) Y RWY 1

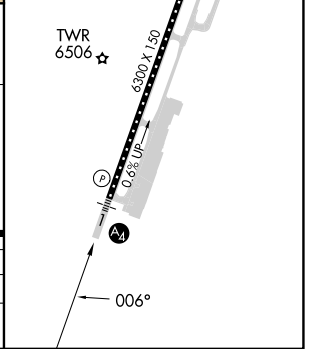
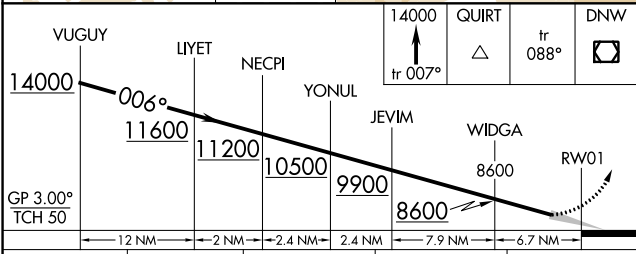
JACKSON HOLE (JAC)

RNP AR APCH.	MALS	MISSED APPROACH: Climb to 14000 on track 007° to QUIRT and track 088° to DNW VOR/DME and hold, continue climb-in-hold to 14000.
<p>Inop table does not apply.</p> <p>For uncompensated Baro-VNAV systems, procedure NA below -27°C or above 54°C.</p>		

D-ATIS 120.625	SALT LAKE CENTER 133.25 285.6	JACKSON TOWER* 118.075 (CTAF) 1	GND CON 124.55	UNICOM 122.95
--------------------------	---	---	--------------------------	-------------------------



ELEV 6451	D TDZE 6431
CL Rwy 1-19 1	HIRL Rwy 1-19 1



CATEGORY	A	B	C	D
RNP 0.30 DA	7373-4		942 (1000-4)	

AUTHORIZATION REQUIRED

NW-1, 31 OCT 2024 to 28 NOV 2024

NW-1, 31 OCT 2024 to 28 NOV 2024