


APP CRS Rwy Idg **6300**
 TDZE **6431**
 Apt Elev **6451**

RNAV (RNP) Z RWY 1

JACKSON HOLE (JAC)

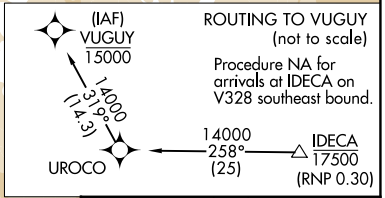
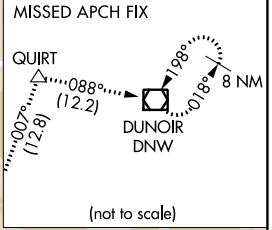
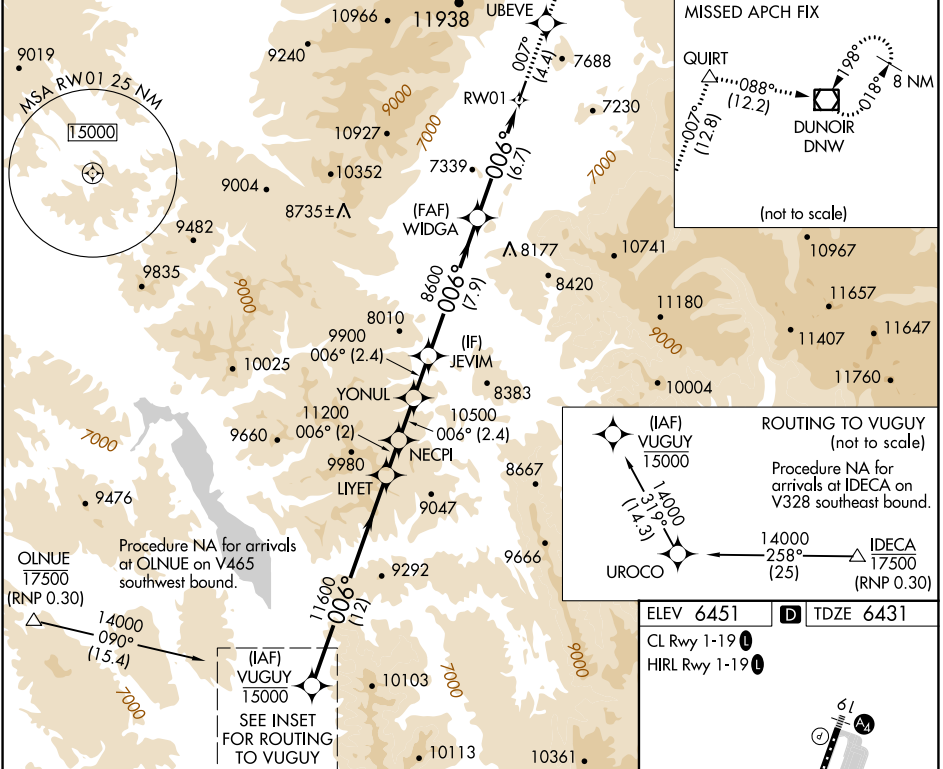
RNP AR APCH.

▼ For uncompensated Baro-VNAV systems, procedure NA below -27°C or above 54°C.
 ❄️ -22°C Inop table does not apply to RNP 0.11* all Cats visibility. For inop ALS, increase RNP 0.30* all Cats visibility to 7/8 SM. Missed approach requires RNP less than 1.0.

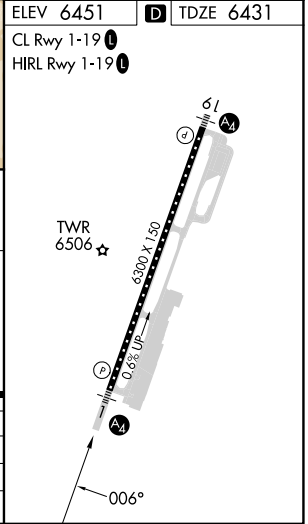
MALS 

MISSED APPROACH: Climb to 14000 on track 007° to UBEVE and track 007° to QUIRT and track 088° to DNW VOR/DME and hold, continue climb-in-hold to 14000.
 * Missed approach requires minimum climb of 330 feet per NM to 8200; if unable to meet climb gradient, see RNAV (RNP) Y RWY 1.

D-ATIS 120.625	SALT LAKE CENTER 133.25 285.6	JACKSON TOWER* 118.075 (CTAF)	GND CON 124.55	UNICOM 122.95
--------------------------	---	---	--------------------------	-------------------------



VUGUY	LYET	NECPI	YONUL	UBEVE	QUIRT	DNW
14000	11600	11200	10500	8600	8600	8600
GP 3.00° TCH 50						
	12 NM	2 NM	2.4	2.4	7.9 NM	6.7 NM
CATEGORY	A	B	C	D		
RNP 0.11 DA*		6690-3/4	259 (300-3/4)			
RNP 0.30 DA*		6743-3/4	312 (300-3/4)			



AUTHORIZATION REQUIRED

NW-1, 31 OCT 2024 to 28 NOV 2024

NW-1, 31 OCT 2024 to 28 NOV 2024