

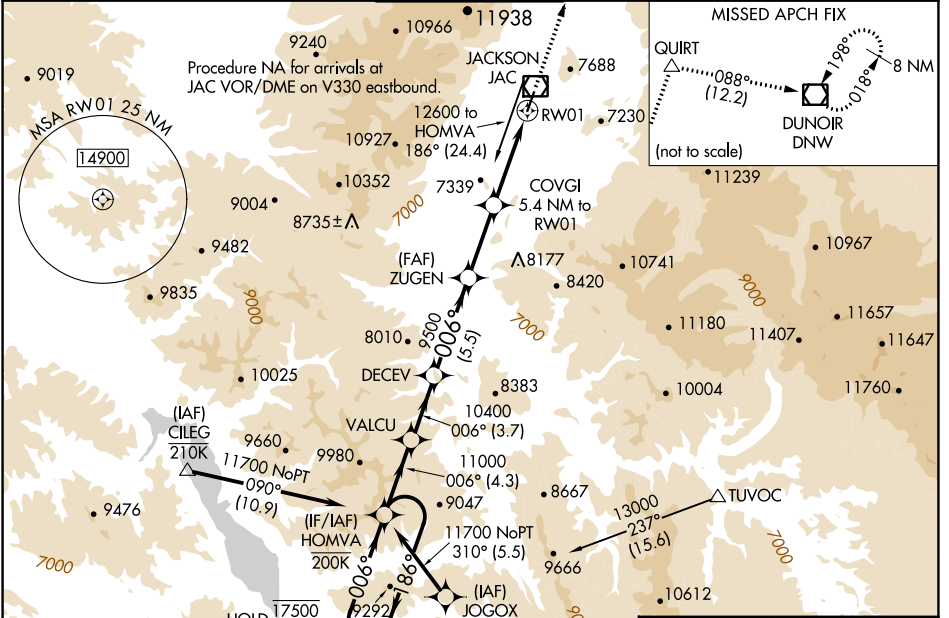
WAAS CH 58299 W01A	APP CRS 006°	Rwy Idg 6300 TDZE 6431 Apt Elev 6451
--	------------------------	---

RNAV (GPS) X RWY 1

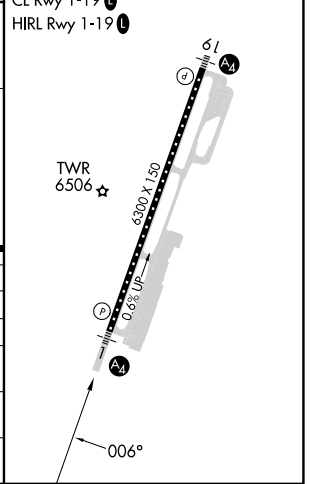
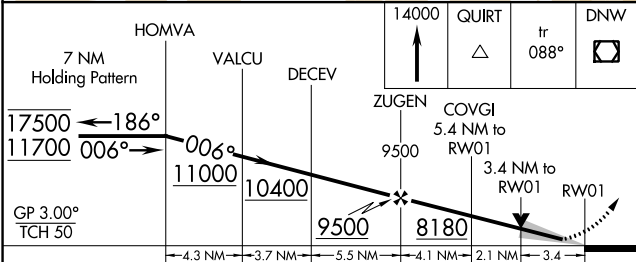
JACKSON HOLE (JAC)

RNP APCH-GPS.	MALS =	MISSED APPROACH: Climb to 14000 direct QUIRT and on track 088° to DNW VOR/DME and hold, continue climb-in-hold to 14000. *Missed approach requires minimum climb of 385 feet per NM to 7700.
<p>▼ Circling NA east of Rwy 1-19. Baro-VNAV NA.</p> <p>▲ Circling NA for Cat D. Inop table does not apply to LPV, LPV*, LNAV/VNAV, and LNAV Cat C/D.</p> <p>☁ -22°C</p>	<p>Ⓜ</p>	

D-ATIS 120.625	SALT LAKE CENTER 133.25 285.6	JACKSON TOWER* 118.075 (CTAF) 1	GND CON 124.55	UNICOM 122.95
--------------------------	---	--	--------------------------	-------------------------



ELEV 6451	TDZE 6431
-----------	-----------



CATEGORY	A	B	C	D
LPV DA*	6651/40		220 (200-¾)	
LPV DA	7445-4		1014 (1000-4)	
LNAV/VNAV DA	7327-4		896 (900-4)	
LNAV MDA	7540/55 1109 (1100-1)	7540-1¼ 1109 (1100-1¼)	7540-3 1109 (1100-3)	
CIRCLING	7540-1¼ 1089 (1100-1¼)	7540-1½ 1089 (1100-1½)	7560-3 1109 (1200-3)	NA

NW-1, 31 OCT 2024 to 28 NOV 2024

NW-1, 31 OCT 2024 to 28 NOV 2024