

HI-TACAN Z RWY 3L

TACAN NYL Chan 84	APCH CRS 039°	Rwy ldg 13,300 TDZE 195 Arprt Elev 213
-----------------------------	-------------------------	---

AL-511 [USN]

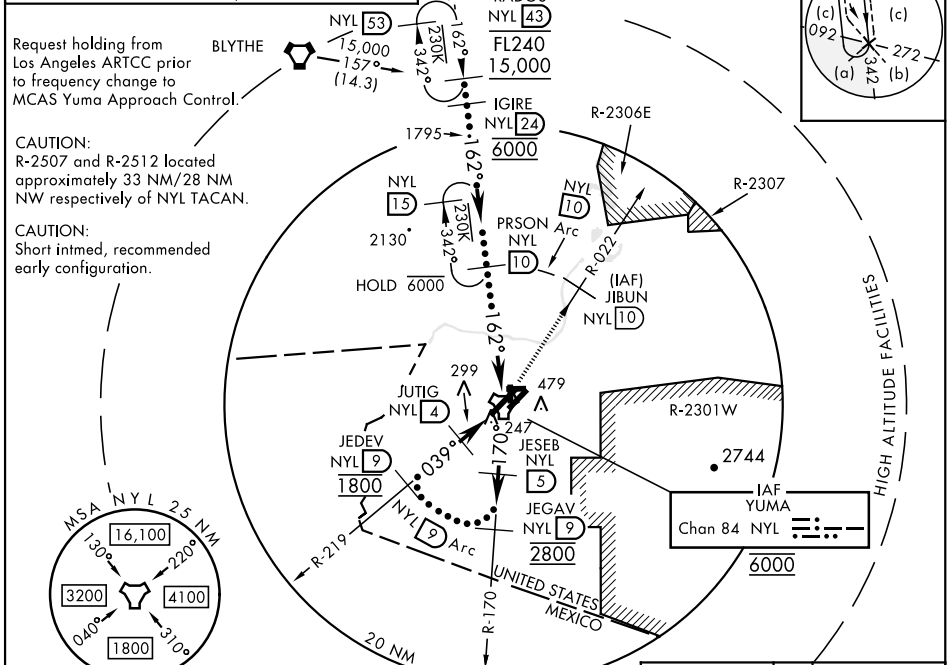
YUMA MCAS/YUMA INTL (KNYL)

MISSED APPROACH: Climbing left turn to 4000, intercept NYL TACAN R-022 to JIBUN, cross JIBUN at or above 4000.

ATIS★ 118.8 273.5	APP CON 124.7 371.975	TOWER★ 119.3 (CTAF) 0 377.075	GND CON 121.9 314.0	CLNC DEL 118.0 336.4	ASR/ PAR
-----------------------------	---------------------------------	---	-------------------------------	--------------------------------	-------------

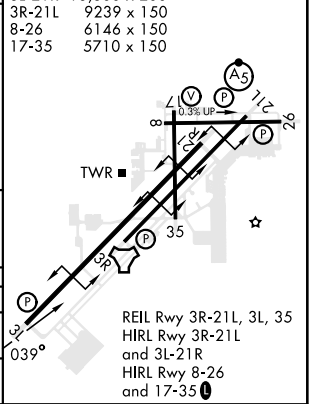
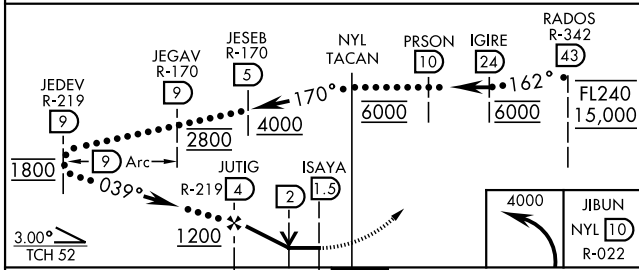
Knots	60	120	180	240	300	360
V/V(fpm)	325	650	975	1300	1625	1950

ATC climb of 325 ft/NM to 4000



EMERG SAFE ALT 100 NM 17,100

ELEV 213	TDZE 195
----------	----------



CATEGORY	C	D	E
S-3L	560-1	365	(400-1)
CIRCLING	800-1½ 587 (600-1½)	800-2 587 (600-2)	

YUMA, ARIZONA 32°39'N-114°36'W YUMA MCAS/YUMA INTL (KNYL)

Amdt 5 22APR21

HI-TACAN Z RWY 3L

SW-4, 31 OCT 2024 to 28 NOV 2024

SW-4, 31 OCT 2024 to 28 NOV 2024