

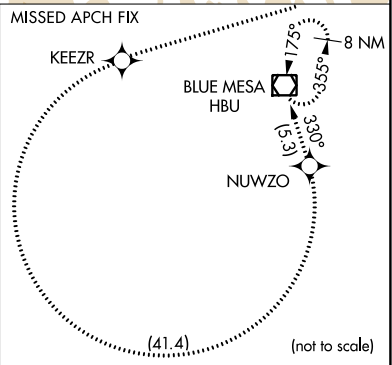
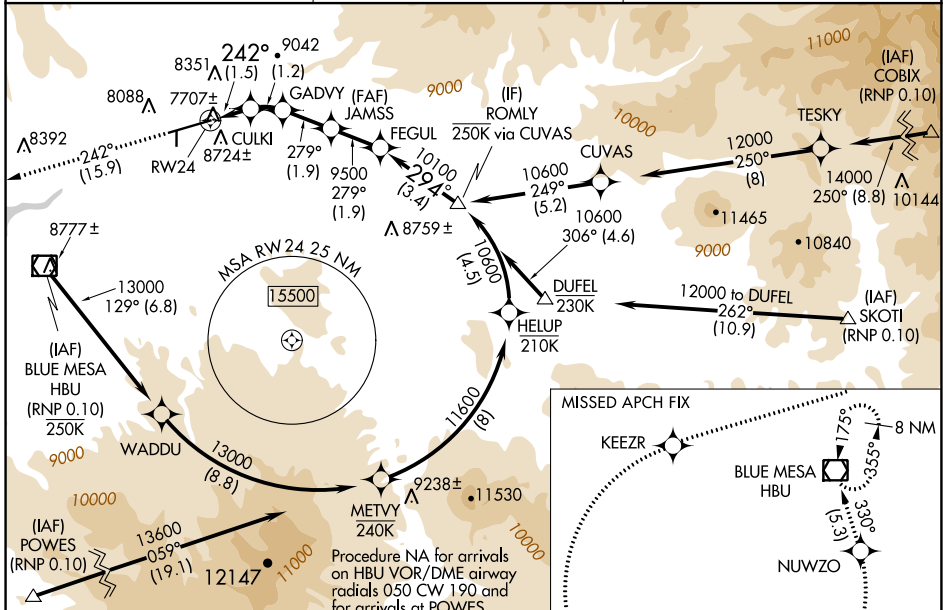
APP CRS	Rwy Idg	9400
242°	TDZE	7680
	Apt Elev	7680

RNAV (RNP) RWY 24

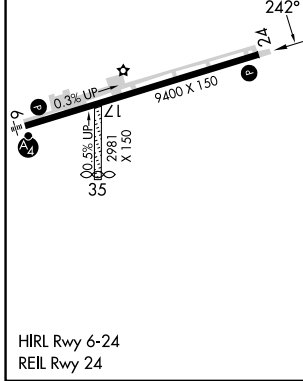
GUNNISON-CRESTED BUTTE RGNL (GUC)

RNP AR APCH - GPS, RF, min RNP 0.10. Authorization required.	MISSED APPROACH: Climb to 14000 on track 242° to KEEZR, and left turn to NUWZO, and on track 330° to HBU VOR/DME and hold. Missed approach requires minimum climb of 425 feet per NM to 9000.
<p>▼ When local altimeter setting not received, procedure NA.</p> <p>❄ -26°C Procedure NA for aircraft with wingspan greater than 136 feet. For uncompensated Baro-VNAV systems, procedure NA below -29°C or above 24°C.</p>	

AWOS-3PT 135.075	DENVER CENTER 124.5 350.25	UNICOM 122.7 (CTAF) 0
----------------------------	--------------------------------------	---------------------------------



ELEV 7680	D	TDZE 7680
------------------	----------	------------------



14000	KEEZR	NUWZO	VGSI and RNAV glidepath not coincident (VGSI Angle 3.60/TCH 71).		ROMLY
tr 242°			JAMSS	FEGUL	
	CULKI	GADVY	9500	10100	10600
	8320	8776	279°	294°	Procedure Turn NA
			9500		GP 3.60°
					TCH 65
			1.5 NM	1.2 NM	1.9 NM
			1.9 NM	3.4 NM	

CATEGORY	A	B	C	D
RNP 0.10 DA	8029-1 349 (400-1)			NA

AUTHORIZATION REQUIRED

SW-1, 31 OCT 2024 to 28 NOV 2024

SW-1, 31 OCT 2024 to 28 NOV 2024