

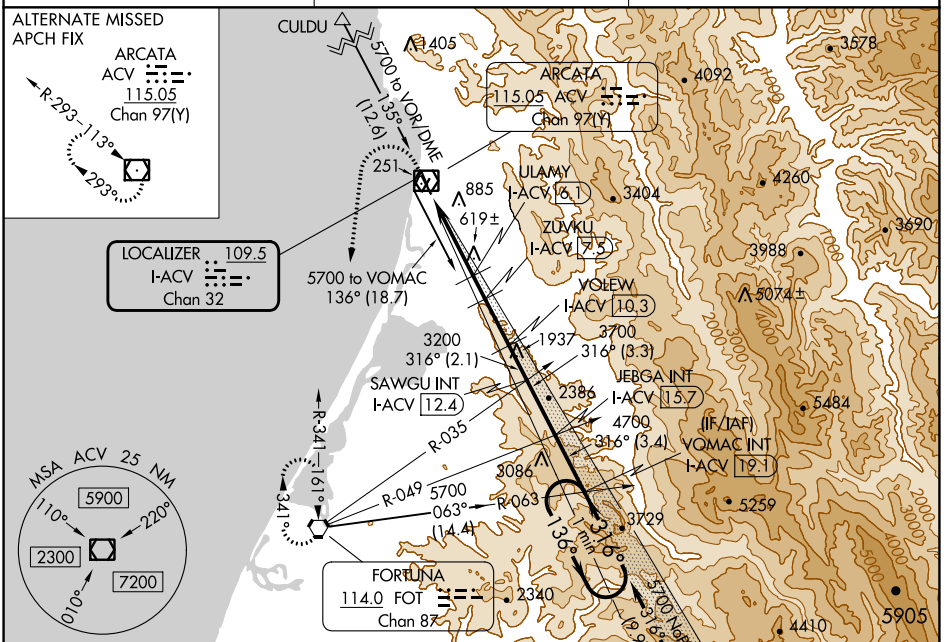
LOC/DME I-ACV <b>109.5</b> Chan <b>32</b>	APP CRS <b>316°</b>	Rwy Idg TDZE Apt Elev	<b>5846</b> <b>221</b> <b>222</b>
---	------------------------	-----------------------------	---

# ILS or LOC RWY 32

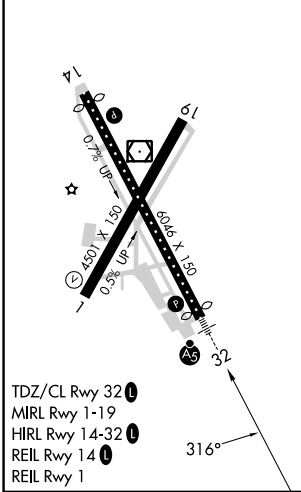
CALIFORNIA REDWOOD COAST-HUMBOLDT COUNTY (ACV)

<p>Circling NA northeast of Rwy 14-32. DME required.</p>	<p>MALS R</p>	<p>MISSED APPROACH: Climb to 800 then climbing left turn to 3000 direct FOT VORTAC and hold.</p>
--	---------------	--

ASOS <b>118.525</b>	SEATTLE CENTER <b>124.85 306.3</b>	UNICOM <b>123.0 (CTAF)</b>
------------------------	---------------------------------------	-------------------------------



ELEV 222	<b>D</b>	TDZE 221
----------	----------	----------



Use I-ACV DME when on the localizer course.  
VGSi and ILS glidepath not coincident (VGSi Angle 3.00/TCH 43).

800	3000	FOT	VOMAC I-ACV 19.1	One Minute Holding Pattern
*LOC only				
I-ACV 1.1	*I-ACV 3	ULAMY I-ACV 6.1	ZUVKU I-ACV 7.5	VOLEW I-ACV 10.3
				JEBGA I-ACV 15.7
				VOMAC I-ACV 19.1
				GS 3.00° TCH 47

136° → ← 316° 5700

CATEGORY	A	B	C	D
S-ILS 32	441/18 220 (300-1/2)			
S-LOC 32	880/24	659 (700-1/2)	880-1 3/8	659 (700-1 1/8)
CIRCLING	880-1	658 (700-1)	880-1 7/8	880-2
			658 (700-1 1/8)	658 (700-2)

SW-2, 31 OCT 2024 to 28 NOV 2024

SW-2, 31 OCT 2024 to 28 NOV 2024