

LOC/DME I-RTS 111.9 Chan 56	APP CRS 318°	Rwy Idg TDZE Api Elev 7800 5045 5050
--	------------------------	--

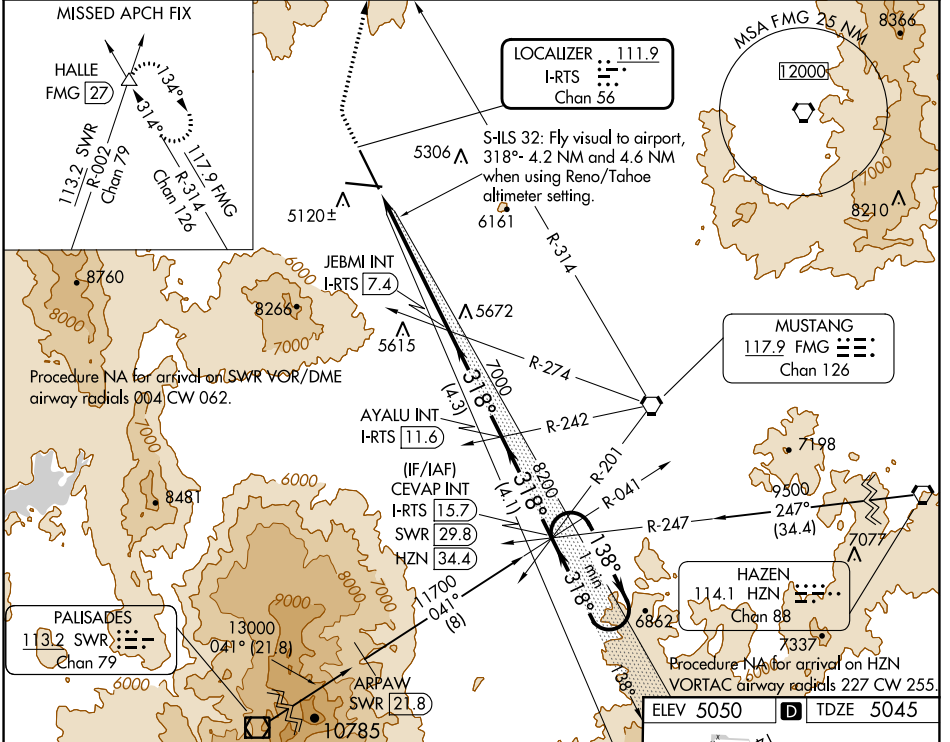
ILS or LOC RWY 32

RENO/STEAD (RTS)

NA Inoperative table does not apply. Procedure NA at night. When local altimeter setting not received, use Reno/Tahoe Intl altimeter setting and increase all DA/MDA 120 feet. VDP NA when using Reno/Tahoe Intl altimeter setting. Circling NA for Cat D southwest of Rwy 14-32.

MALSR MISSED APPROACH: Climb to 6740 then climbing right turn to 14000 on heading 356° and FMG VORTAC R-314 to HALLE INT/FMG 27 DME and hold, continue climb-in-hold to 14000.

AWOS-3 135.175	NORCAL APP CON 126.3 353.9	UNICOM 122.7 (CTAF)
--------------------------	--------------------------------------	-------------------------------



6740 14000 FMG HALLE Use I-RTS DME when on the localizer course.

↑ hdg R-314 △

S-ILS 32: Fly visual to airport, 318°- 4.2 NM and 4.6 NM when using Reno/Tahoe altimeter setting.

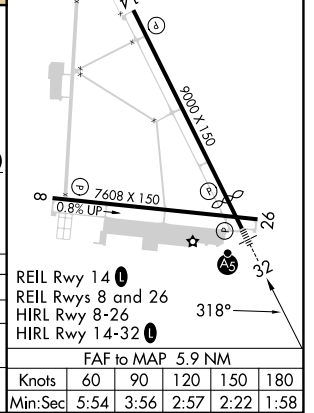
JEBMI INT I-RTS 7.4

I-RTS 1.5 7000

8200 318° 138° 9400

GS 3.00° TCH 40

5.1 NM 0.8 4.3 NM 4.1 NM



CATEGORY	A	B	C	D
S-ILS 32		6425-3	1380 (1400-3)	
S-LOC 32	6720-1½ 1675 (1700-1½)	6720-1½ 1675 (1700-1½)	6720-3	1675 (1700-3)
CIRCLING	6720-1½ 1670 (1700-1½)	6720-1½ 1670 (1700-1½)	6720-3	1670 (1700-3)

REIL Rwy 14
REIL Rws 8 and 26
HIRL Rwy 8-26
HIRL Rwy 14-32

FAF to MAP 5.9 NM

Knots	60	90	120	150	180
Min:Sec	5:54	3:56	2:57	2:22	1:58

SW-4, 31 OCT 2024 to 28 NOV 2024

SW-4, 31 OCT 2024 to 28 NOV 2024