


WAAS CH <b>70608</b> <b>W06A</b>	APP CRS <b>051°</b>	Rwy Idg <b>7400</b> TDZE <b>2291</b> Apt Elev <b>2320</b>
--	------------------------	---

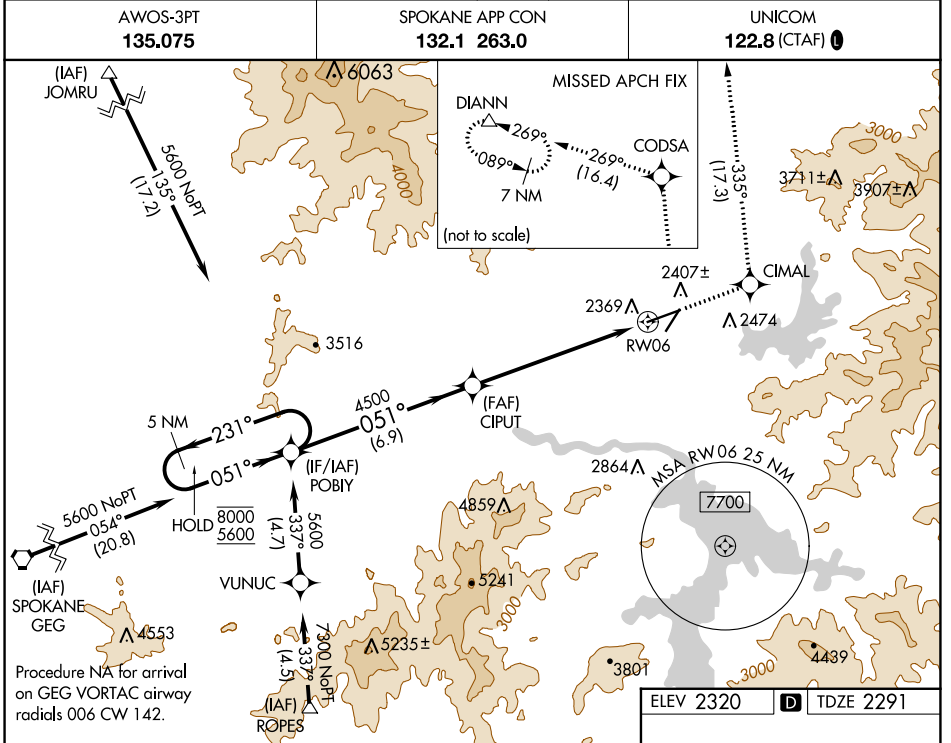
# RNAV (GPS) RWY 6

COEUR D'ALENE/PAPPY BOYINGTON FLD (COE)

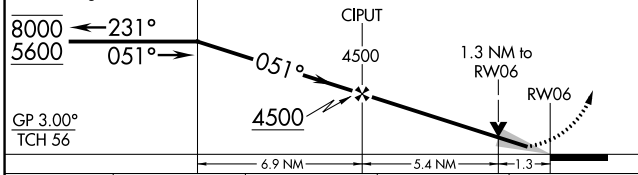
RNP APCH - GPS.

**MAJRS**  MISSED APPROACH: Climb to 7000 direct CIMAL and on track 335° to CODSA and on track 269° to DIANN and hold.

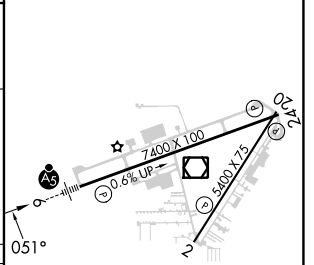
**AWOS-3PT 135.075**      **SPOKANE APP CON 132.1 263.0**      **UNICOM 122.8 (CTAF)**



7000	CIMAL	tr 335°	CODSA	tr 269°	DIANN
------	-------	---------	-------	---------	-------



ELEV 2320	<b>D</b>	TDZE 2291
-----------	----------	-----------



CATEGORY	A	B	C	D
LPV DA		2491-½	200 (200-½)	
LNAV/VNAV DA		2654-¾	363 (400-¾)	
LNAV MDA	2740-½	449 (500-½)	2740-1	449 (500-1)
CIRCLING	2740-1 420 (500-1)	2880-1 560 (600-1)	3020-2 700 (700-2)	3180-2¾ 860 (900-2¾)

MIRL Rwy 2-20 **1**  
HIRL Rwy 6-24 **1**  
REIL Rws 2 and 24 **1**

NW-1, 31 OCT 2024 to 28 NOV 2024

NW-1, 31 OCT 2024 to 28 NOV 2024