

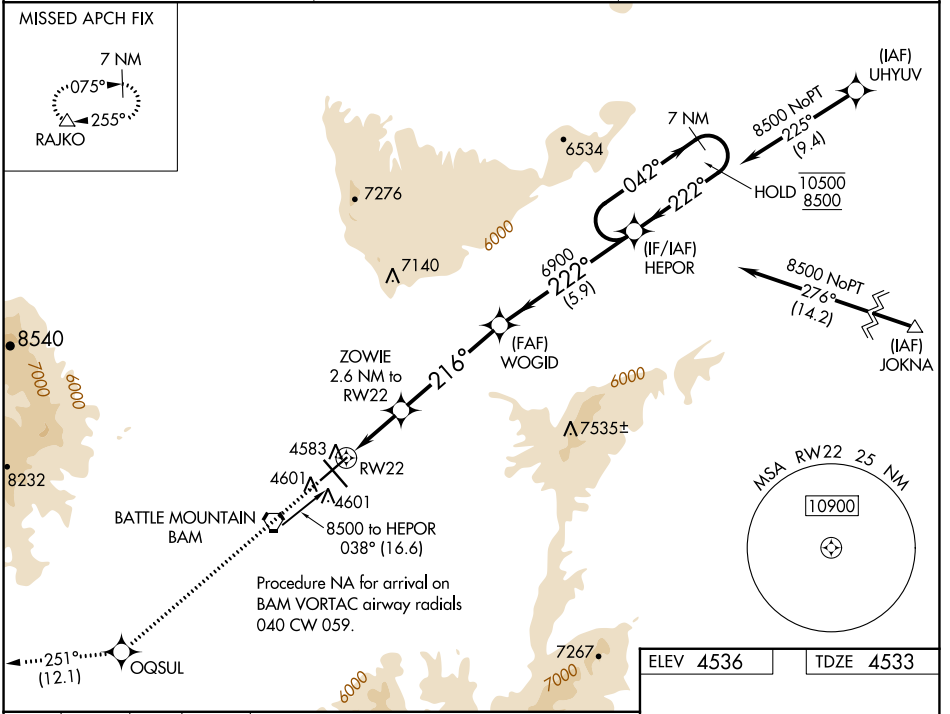
WAAS CH 82741 W22A	APP CRS 216°	Rwy Idg 7300 TDZE 4533 Apt Elev 4536
--	------------------------	---

RNAV (GPS) RWY 22

BATTLE MOUNTAIN (BAM)

RNP APCH. ▼ ▲ Baro-VNAV NA.	MISSED APPROACH: Climb to 11900 direct OQSUL and track 251° to RAJKO and hold, continue climb-in-hold to 11900.
-----------------------------------	---

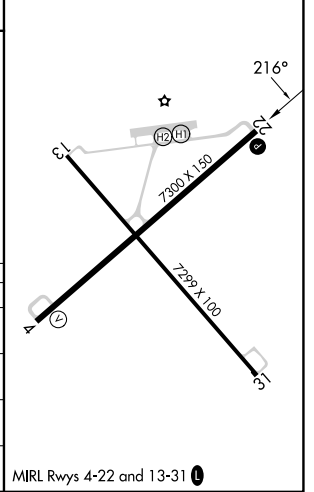
AWOS-3 119.45	SALT LAKE CITY CENTER 132.25 338.35	UNICOM 122.8 (CTAF) ①
-------------------------	---	---------------------------------



11900 OQSUL	tr 251°	RAJKO	VGSI and RNAV glidepath not coincident (VGSI Angle 3.00/TCH 45).	7 NM Holding Pattern
*LNAV only.		ZOWIE 2.6 NM to RW22	WOGID	HEPOR
*0.8 NM to RW22		6900	222°	10500 8500
RW22		216°	6900	GP 3.00° TCH 51
0.8 NM		1.8 NM	4.7 NM	5.9 NM
5400*		042°	222°	

ELEV 4536	TDZE 4533
-----------	-----------

CATEGORY	A	B	C	D
LPV DA		4753-1	220 (300-1)	
LNAV/VNAV DA		4808-1	275 (300-1)	
LNAV MDA	4980-1	447 (500-1)	4980-1 ³ / ₈	447 (500-1 ³ / ₈)
CIRCLING	4980-1 444 (500-1)	5000-1 464 (500-1)	5000-1 ¹ / ₂ 464 (500-1 ¹ / ₂)	5460-3 924 (1000-3)



SW-4, 31 OCT 2024 to 28 NOV 2024

SW-4, 31 OCT 2024 to 28 NOV 2024