

HI-TACAN Z RWY 13

TACAN OFF Chan 54	APCH CRS 122°	Rwy ldg 10,695 TDZE 1048 Arpt Elev 1048
-----------------------------	-------------------------	--

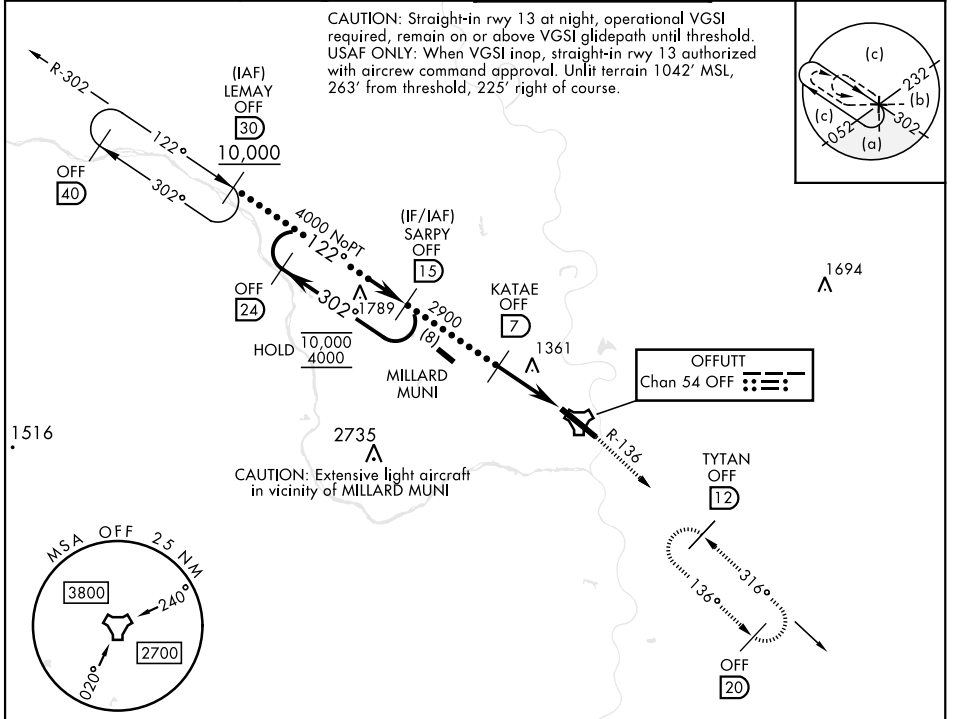
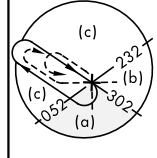
[USAF]

OFFUTT AFB (KOFF)

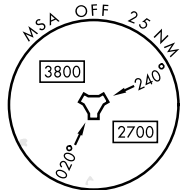
<p>▼ * When ALS inop, increase vis to 1½ miles. ** Circling not authorized N of Rwy 13-31.</p>	<p>ALSIF-1 (A1)</p>	<p>MISSED APPROACH: Climb to 3000 via OFF TACAN R-136 to TYTAN and hold.</p>
---	--------------------------------	--

<p>ATIS 126.025 273.5</p>	<p>OMAHA APP CON 124.5 263.0 (E) 120.1 354.05 (W)</p>	<p>TOWER 123.7 279.625</p>	<p>GND CON 121.7 289.4</p>
--------------------------------------	---	---------------------------------------	---------------------------------------

CAUTION: Straight-in rwy 13 at night, operational VGSI required, remain on or above VGSI glidepath until threshold. USAF ONLY: When VGSI inop, straight-in rwy 13 authorized with aircrew command approval. Unlit terrain 1042' MSL, 263' from threshold, 225' right of course.

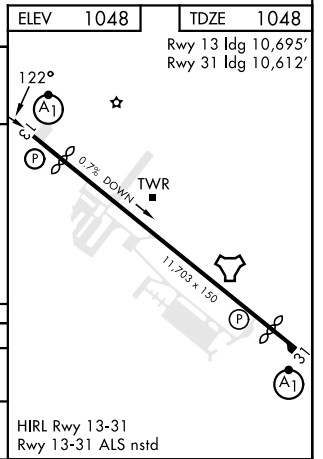
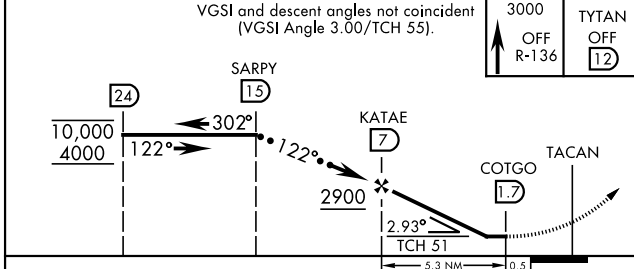


CAUTION: Extensive light aircraft in vicinity of MILLARD MUNI



EMERG SAFE ALT 100 NM 4700

VGSI and descent angles not coincident (VGSI Angle 3.00/TCH 55).



CATEGORY	C	D	E
S-13 *	1620-1¼	572	(600-1¼)
C CIRCLING**	1660-1¼ 612 (700-1¼)	1940-3	892 (900-3)

HIRL Rwy 13-31
Rwy 13-31 ALS nstd

HI-TACAN Z RWY 13

NC-2, 31 OCT 2024 to 28 NOV 2024

NC-2, 31 OCT 2024 to 28 NOV 2024