

SW-3, 31 OCT 2024 to 28 NOV 2024

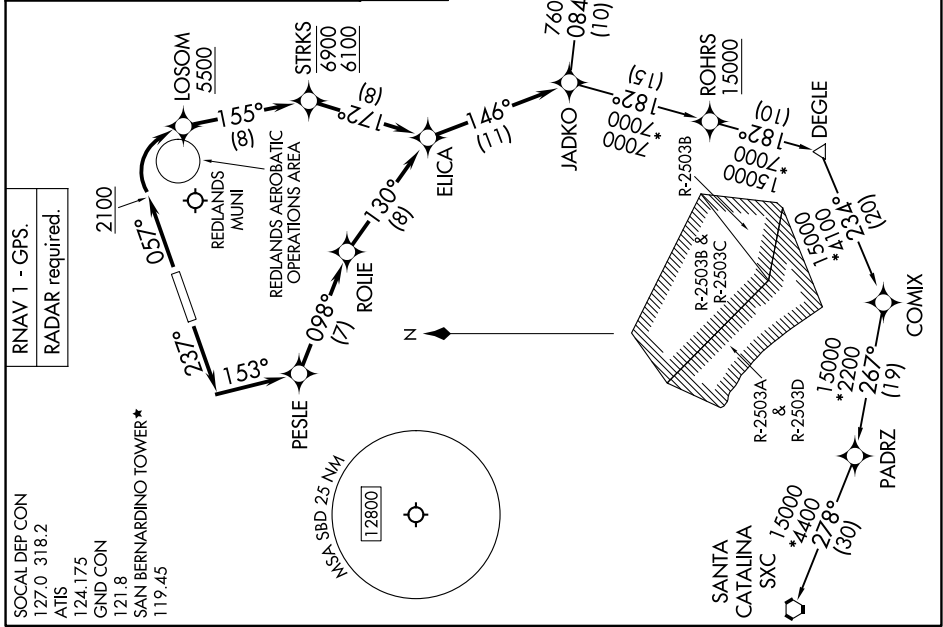
DEPARTURE ROUTE DESCRIPTION

TAKEOFF RUNWAY 6: Climb on heading 057° to 2100, then climbing right turn direct LOSOM to cross LOSOM at or above 5500, then on track 155° to cross STRKS between 6100 and 6900 then on track 172° to ELICA, thence. . . .

TAKEOFF RUNWAY 24: Climb on heading 237° to intercept course 153° to PESLE, then on track 098° to ROLIE, then on track 130° to ELICA, thence. . . . on track 146° to JADKO. Expect filled altitude 10 minutes after departure.

AVRRY TRANSITION (JADKO1.AVRRY)
MTBAL TRANSITION (JADKO1.MTBAL)
SANTA CATALINA TRANSITION (JADKO1.SXC)

TOP ALTITUDE:
AVRRY and MTBAL TRANSITIONS: 14000;
SANTA CATALINA TRANSITION: 15000.



NOTE: Chart not to scale.

SW-3, 31 OCT 2024 to 28 NOV 2024