

APP CRS Rwy ldg **10000**  
 057° TDZE **1103**  
 Apt Elev **1159**

# RNAV (GPS) Y RWY 6

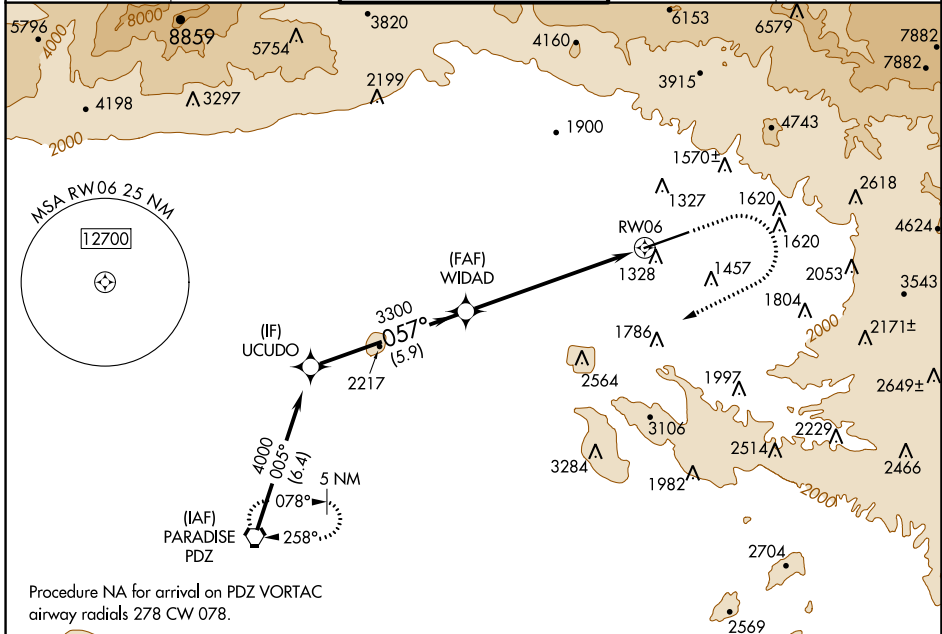
SAN BERNARDINO INTL (SBD)

RNP APCH

**▼** Circling NA northwest of Rwy 6-24. When local altimeter setting not received, use Ontario altimeter setting and increase all MDA 80 feet.

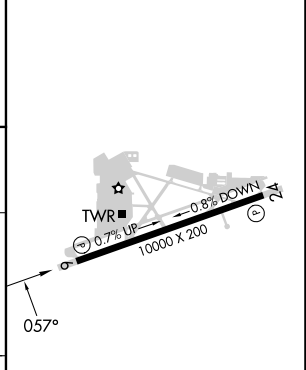
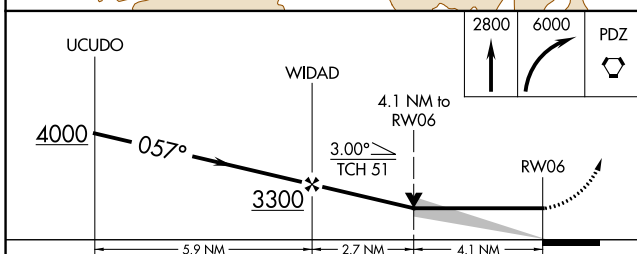
**MISSED APPROACH:** Climb to 2800 then climbing right turn to 6000 direct PDZ VORTAC and hold, continue climb-in-hold to 6000.

D-ATIS <b>124.175</b>	SOCAL APP CON <b>127.0 318.2</b>	SAN BERNARDINO TOWER ★ <b>119.45 (CTAF) 0</b>	GND CON <b>121.8</b>	UNICOM <b>122.975</b>
--------------------------	-------------------------------------	--	-------------------------	--------------------------



Procedure NA for arrival on PDZ VORTAC  
 airway radials 278 CW 078.

ELEV 1159 **D** TDZE 1103



CATEGORY	A	B	C	D
LNVA MDA	2460-1¼ 1357 (1400-1¼)	2460-1½ 1357 (1400-1½)	2460-3 1357 (1400-3)	1357 (1400-3)
<b>C</b> CIRCLING	2460-1¼ 1301 (1400-1¼)	2460-1½ 1301 (1400-1½)	2460-3 1301 (1400-3)	2640-3 1481 (1500-3)

HIRL Rwy 6-24 **0**  
 REIL Rws 6 and 24 **0**

SW-3, 31 OCT 2024 to 28 NOV 2024

SW-3, 31 OCT 2024 to 28 NOV 2024