

# HARYS FOUR DEPARTURE (RNAV)

AL-552 (FAA)

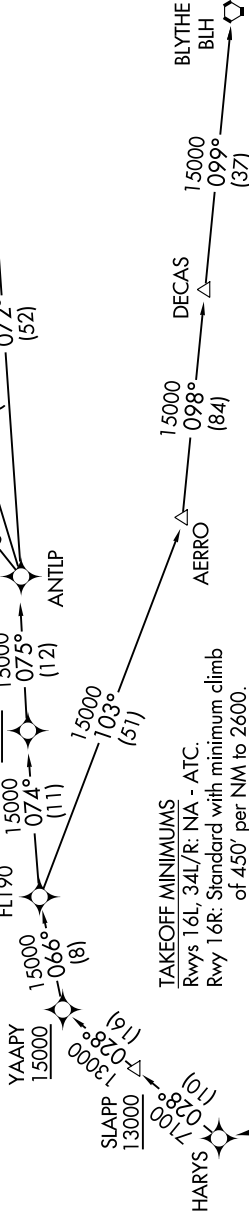
VAN NUYS (VNY)  
VAN NUYS, CALIFORNIA

SW-3, 31 OCT 2024 to 28 NOV 2024

**TOP ALTITUDE:  
FL230**

- NOTE: DME/DME/IRU or GPS required.
- NOTE: RADAR required.
- NOTE: RNAV 1.
- NOTE: Turbojet and high performance turboprop aircraft only.
- NOTE: MISEN transition restricted to aircraft landing LAS terminal area.
- NOTE: HALLO transition ATC only.
- NOTE: Cross DER/VNY VOR/DME 1.5 DME south at or below 1750.

ATIS 127.55  
 CLNC DEL 126.6 239.0  
 CPDLC  
 GND CON  
 121.7  
 VAN NUYS TOWER\* 119.3 239.0  
 SOCIAL DEP CON 124.6 298.85



**TAKEOFF MINIMUMS**  
 Rwy 16L, 34L/R: NA - ATC.  
 Rwy 16R: Standard with minimum climb of 450' per NM to 2600.

### DEPARTURE ROUTE DESCRIPTION

**TAKEOFF RUNWAY 16R:** Climb on heading 164° to 1303, then direct PPRRY, then on heading 110° or as assigned by ATC, then on vectors to cross BSHOW at or above 6000, then on track 337° to HARYS, thence . . . . .

. . . . . on (transition) maintain FL230. Expect filed altitude 10 minutes after departure.

- BLYTHE TRANSITION (HARYS4.BLH)
- HALLO TRANSITION (HARYS4.HALLO)
- HECTOR TRANSITION (HARYS4.HEC)
- LAS VEGAS TRANSITION (HARYS4.LAS)
- MISEN TRANSITION (HARYS4.MISEN)

NOTE: Chart not to scale.

# HARYS FOUR DEPARTURE (RNAV) (HARYS4.HARYS) 10SEP20

VAN NUYS, CALIFORNIA  
VAN NUYS (VNY)

SW-3, 31 OCT 2024 to 28 NOV 2024