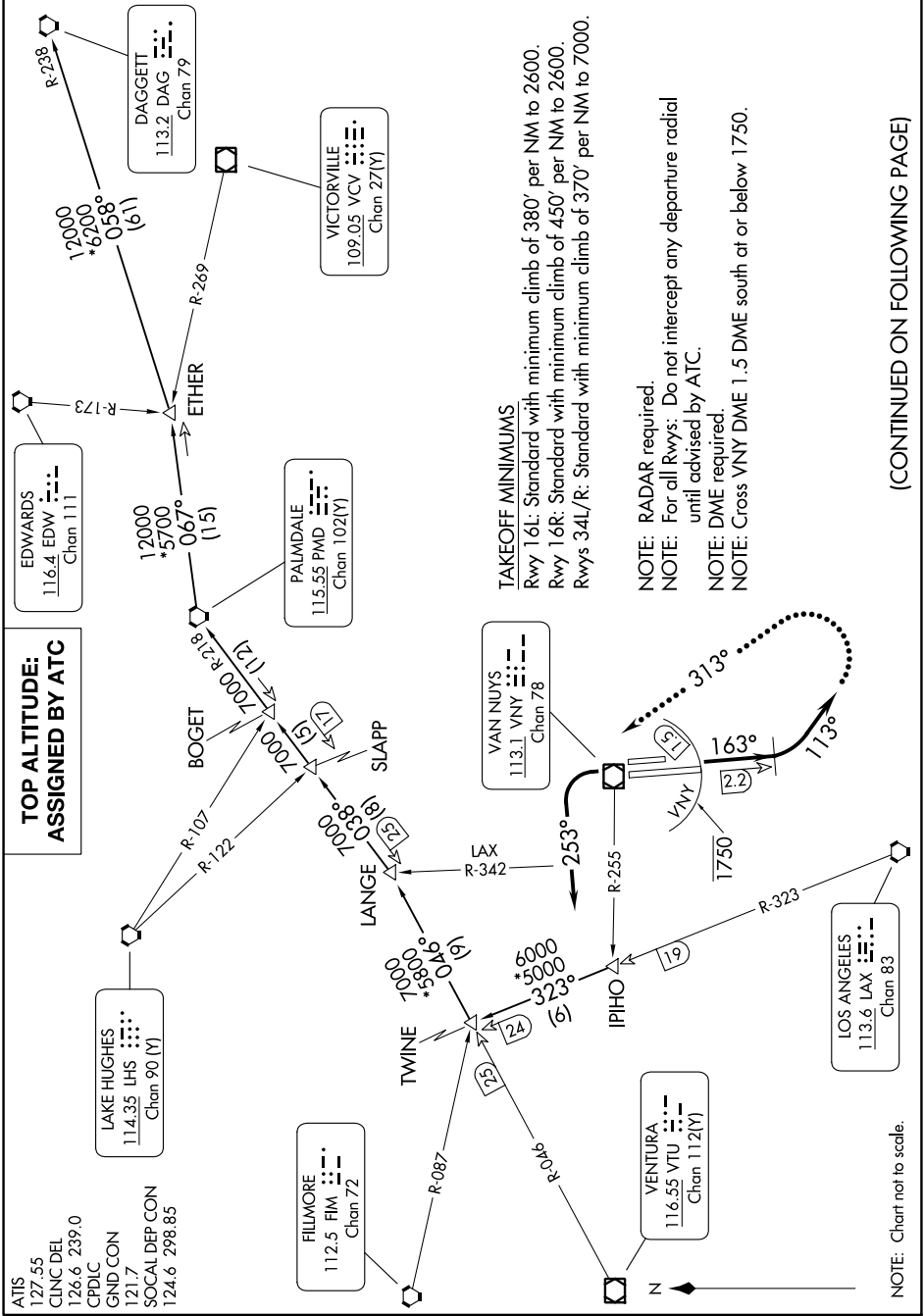


# NEWHALL ONE DEPARTURE

AL-552 (FAA)

VAN NUYS (VNY)  
VAN NUYS, CALIFORNIA

SW-3, 31 OCT 2024 to 28 NOV 2024



### TAKEOFF MINIMUMS

Rwy 16L: Standard with minimum climb of 380' per NM to 2600.  
 Rwy 16R: Standard with minimum climb of 450' per NM to 2600.  
 Rwys 34L/R: Standard with minimum climb of 370' per NM to 7000.

- NOTE: RADAR required.
- NOTE: For all Rwys: Do not intercept any departure radial until advised by ATC.
- NOTE: DME required.
- NOTE: Cross VNY DME 1.5 DME south of or below 1750.

(CONTINUED ON FOLLOWING PAGE)

SW-3, 31 OCT 2024 to 28 NOV 2024

# NEWHALL ONE DEPARTURE

VAN NUYS, CALIFORNIA  
VAN NUYS (VNY)

NOTE: Chart not to scale.