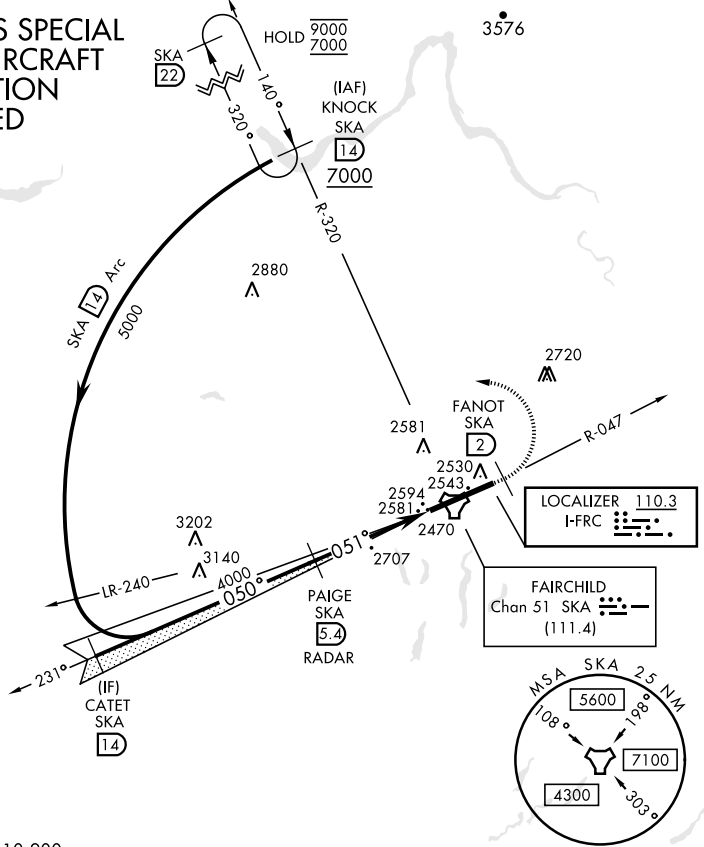


SPOKANE, WASHINGTON

ILS RWY 5 (CAT II)

LOC I-FRC 110.3	APCH CRS 051°	Rwy Idg 13,899 TDZE 2462 Arpt Elev 2462	AL-553 [USAF]	FAIRCHILD AFB (KSKA)
RADAR required for KNOCK holding.			ALSF-2	MISSED APPROACH: Climb to 7000 via SKA TACAN R-047. At FANOT turn left hdg 275° to intcp SKA R-320 to KNOCK and hold, continue climb in hold to 7000.
ATIS 257.625	SPOKANE APP CON (208° - 028°) 123.75 282.25 (029° - 207°) 133.35 263.0		TOWER 120.35 233.7	GND CON 123.6 275.8

CATEGORY II ILS SPECIAL AIRCREW & AIRCRAFT CERTIFICATION REQUIRED



EMERG SAFE ALT 100 NM 10,900

KNOCK (14) 7000	CATET (14) Intcp Lczzr	PAIGE (5.4) RADAR 4000	7000 SKA R-047	FANOT SKA (2) hdg 275°	SKA R-320	ELEV 2462	TDZE 2462
5000 Arc (14)		4000		TACAN		2569	
GS 3.00° TCH 58		4000		4.6 NM		2583, 2643, 2685	
CATEGORY	A	B	C	D	E	HIRL Rwy 5-23 TDZL/CL Rwy 5	
S-ILS 5	RA 98/12		100	DA 2562			

SPOKANE, WASHINGTON 47°37'N-117°39'W FAIRCHILD AFB (KSKA)

Amtd 2 03NOV22

ILS RWY 5 (CAT II)

NW-1, 31 OCT 2024 to 28 NOV 2024

NW-1, 31 OCT 2024 to 28 NOV 2024