

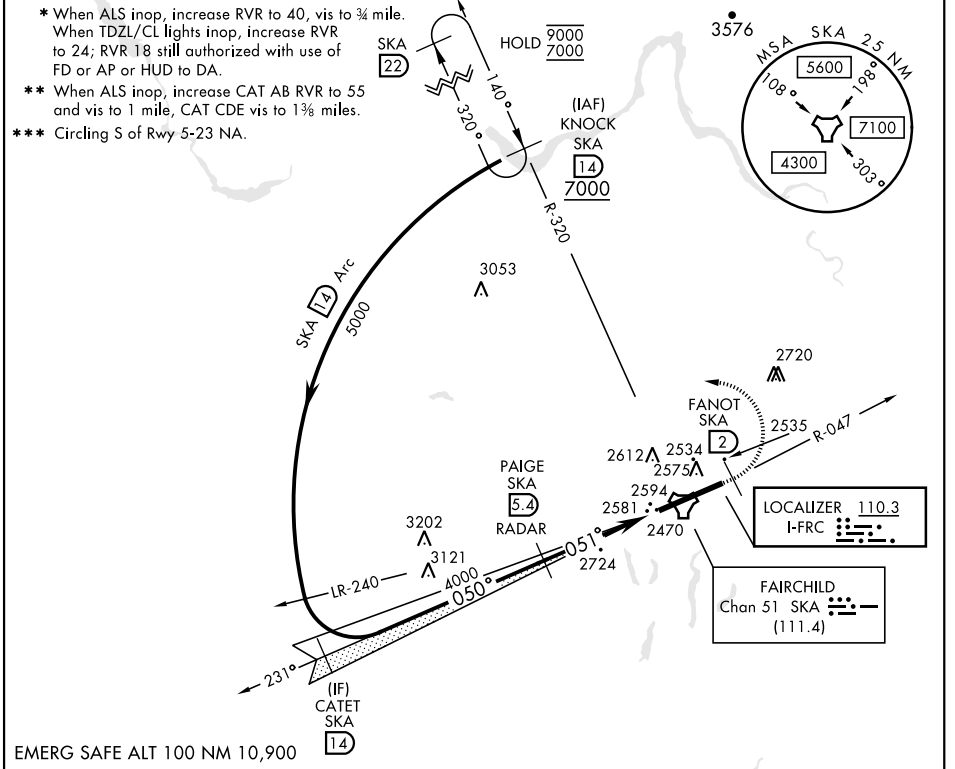
SPOKANE, WASHINGTON

# ILS or LOC RWY 5

LOC I-FRC <b>110.3</b>	APCH CRS <b>051°</b>	Rwy Idg <b>13,899</b> TDZE <b>2462</b> Arpt Elev <b>2462</b>	AL-553 [USAF]	FAIRCHILD AFB (KSKA)
---------------------------	-------------------------	--	---------------	----------------------

DME or RADAR reqrd for LOC. RADAR reqrd for KNOCK holding. ALSF-2 MISSED APPROACH: Climb to 7000 via SKA TACAN R-047. At FANOT turn left hdg 275° to intcp SKA R-320 to KNOCK and hold, cont climb in hold to 7000.

ATIS <b>257.625</b>	SPOKANE APP CON <b>123.75 282.25 263.0</b> (208° - 028°) (029° - 207°)	TOWER <b>120.35 233.7</b>	GND CON <b>123.6 275.8</b>
------------------------	---	------------------------------	-------------------------------



EMERG SAFE ALT 100 NM 10,900

KNOCK R-320 7000 (14)	CATET (14) Intcp Lcizr	PAIGE (5.4) RADAR	7000 SKA R-047	FANOT (2)	hdg 275°	SKA R-320	ELEV 2462	TDZE 2462				
CATEGORY	A	B	C	D	E	FAF to MAP 4.2 NM						
S-ILS 5 *	2662/18		200	(200-½)		HIRL Rwy 5-23 TDZL/CL Rwy 5						
S-LOC 5 **	2960/24 498 (500-½)		2960/50 498 (500-1)									
*** CIRCLING	2960-1 498 (500-1)		3040-1½ 578 (600-1½)	3040-2 578 (600-2)	3600-3 1138 (1200-3)		Knots	60	90	120	150	180
							Min:Sec	4:12	2:48	2:06	1:41	1:24

SPOKANE, WASHINGTON 47°37'N-117°39'W FAIRCHILD AFB (KSKA)

Amtd 6 03NOV22

# ILS or LOC RWY 5

NW-1, 31 OCT 2024 to 28 NOV 2024

NW-1, 31 OCT 2024 to 28 NOV 2024