

# RNAV (RNP) Z RWY 18L

AUSTIN-BERGSTROM INTL (AUS)

APP CRS	Rwy Idg	<b>9000</b>
<b>175°</b>	TDZE	<b>492</b>
	Apt Elev	<b>542</b>

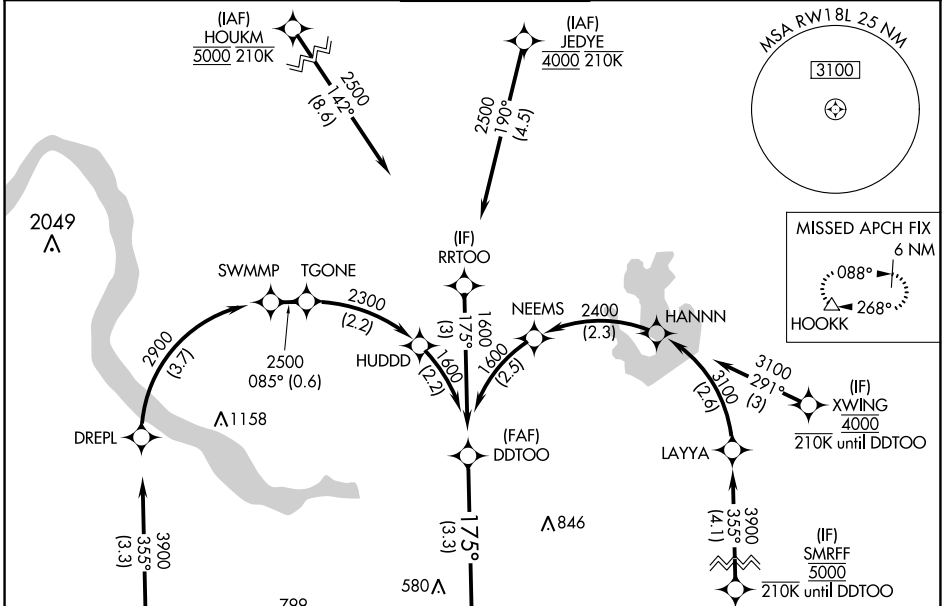
RADAR required. RNP AR APCH-GPS.

Simultaneous approach authorized. For uncompensated Baro-VNAV systems, procedure NA below -5°C or above 54°C.

ALSF-2

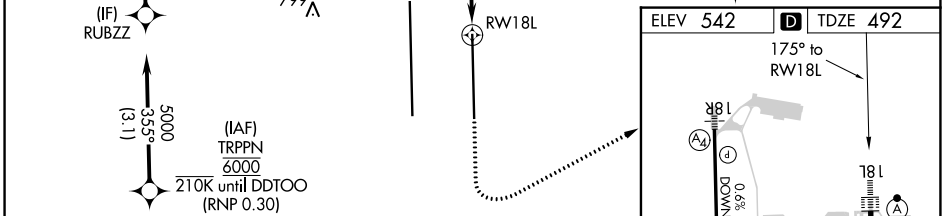
MISSED APPROACH: Climb to 1000 then climbing left turn to 3000 direct HOOKK and hold.

D-ATIS	AUSTIN APP CON	AUSTIN TOWER	GND CON	CLNC DEL	CPDLC
<b>124.4</b>	<b>127.225 317.65 (EAST)</b> <b>120.875 270.25 (SOUTH)</b> <b>119.0 370.85 (WEST)</b>	<b>121.0 281.5</b>	<b>121.9 348.6</b>	<b>125.5 263.0</b>	



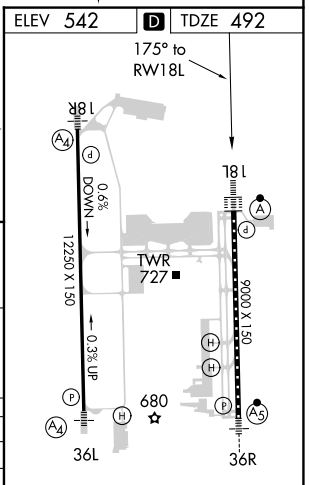
SC-3, 31 OCT 2024 to 28 NOV 2024

SC-3, 31 OCT 2024 to 28 NOV 2024



VGSI and RNAV glidepath not coincident (VGSI Angle 3.00/TCH 74).

1600	1600	1000	3000	HOOKK
GP 3.00° TCH 61				△
See planview for multiple IF locations.				
3.3 NM				



CATEGORY	A	B	C	D
RNP 0.24 DA		825/26	333 (300-1/2)	
RNP 0.30 DA		885/35	393 (400-3/8)	

## AUTHORIZATION REQUIRED

HIRL Rwy 18L-36R and 18R-36L  
TDZ/CL Rwy 18L and 36R