

APP CRS 101°	Rwy Idg TDZE Apt Elev	9708 1141 1203
------------------------	-----------------------------	---

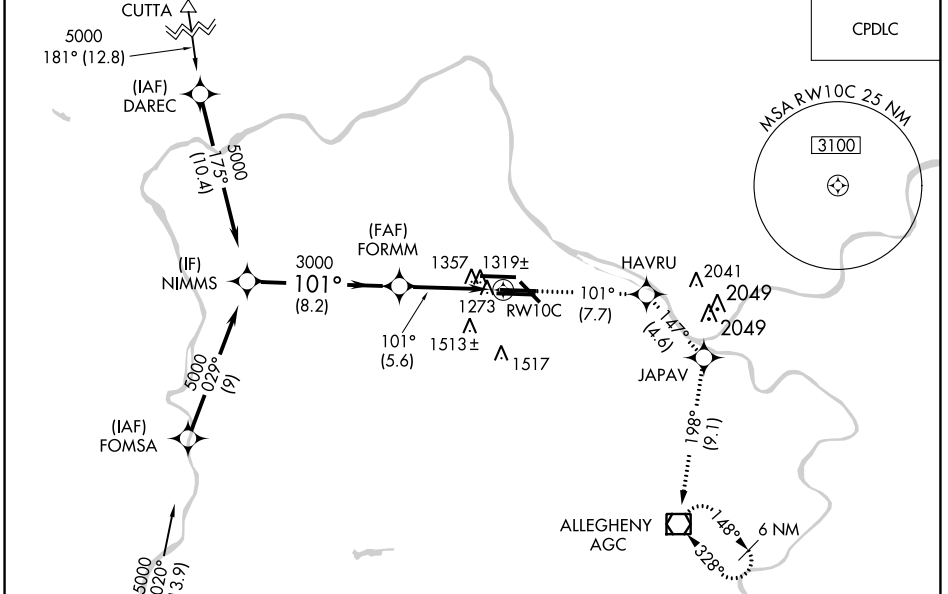
RNAV (RNP) Z RWY 10C

PITTSBURGH INTL (PIT')

▼ For uncompensated Baro-VNAV systems, procedure NA below -17°C (1°F) or above 46°C (116°F). GPS Required. Simultaneous approach authorized with ILS or LOC Rwy 10L, ILS Rwy 10L (Cat II), ILS Rwy 10L (Cat III). Use of FD or AP providing RNAV track guidance required during simultaneous operations.

MISSED APPROACH: Climb to 4000 on track 101° to HAVRU and on track 147° to JAPAV and on track 198° to AGC VOR/DME and hold.

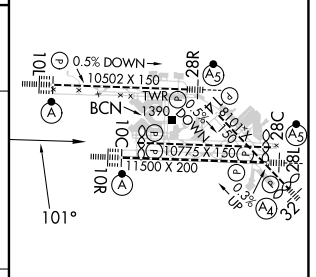
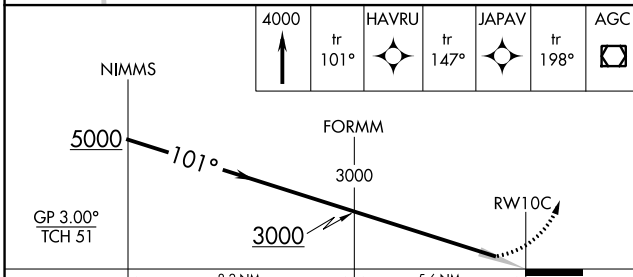
D-ATIS ARR 127.25 DEP 135.9	PITTSBURGH APP CON 123.95 360.8	PITTSBURGH TOWER 128.3 291.7	GND CON SOUTH 121.9 348.6 NORTH 127.8 348.6	CLNC DEL 126.75 353.7
---	---	--	---	---------------------------------



NE-4, 31 OCT 2024 to 28 NOV 2024

NE-4, 31 OCT 2024 to 28 NOV 2024

ELEV 1203	D TDZE 1141
-----------	--------------------



CATEGORY	A	B	C	D
RNP 0.11 DA		1540-1½	399 (400-1½)	
RNP 0.20 DA		1566-1½	425 (400-1½)	
RNP 0.30 DA		1669-1¾	528 (500-1¾)	

AUTHORIZATION REQUIRED

REIL Rwy 10C
HIRL all Rwys
TDZ/CL Rwys 10L, 10R, 28L, 28R, 28C, and 32