

WAAS CH 45810 W34A	APP CRS 344°	Rwy Idg 8500 TDZE 379 Apt Elev 433
--	------------------------	---

RNAV (GPS) Y RWY 34L

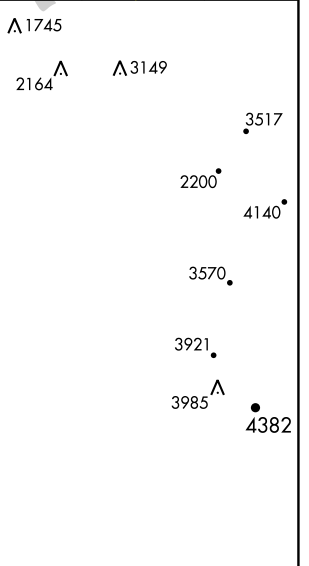
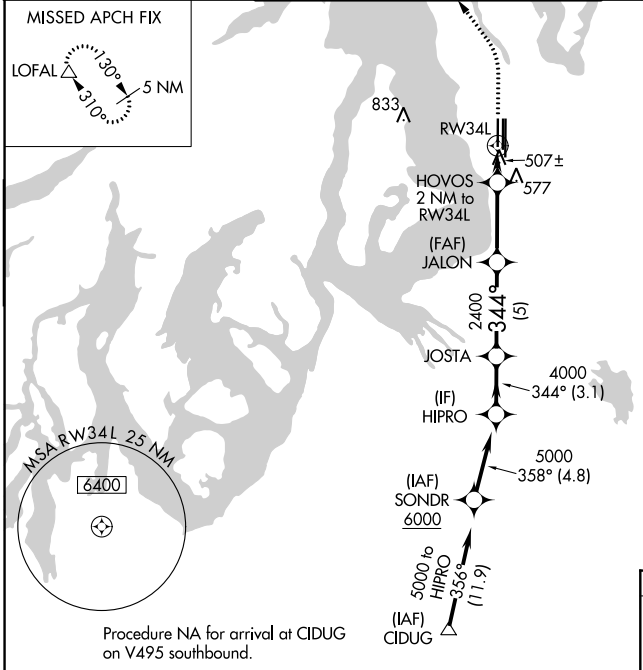
SEATTLE-TACOMA INTL (SEA)

▽ DME/DME RNP -0.3 NA. For uncompensated Baro-VNAV systems, LNAV/VNAV NA below -6°C (22°F) or above 54°C (130°F). Use of FD or AP providing RNAV track guidance required during simultaneous operations. LNAV procedure NA during simultaneous operations. Simultaneous approach authorized with Rwy 34R/C. For inoperative ALS, increase LNAV/VNAV all Cats visibility to 1 3/8 SM, increase LNAV Cat A and B visibility to RVR 5500 and Cat C and D visibility to 1 3/8 SM. #RVR 1800 authorized with use of FD or AP or HUD to DA.

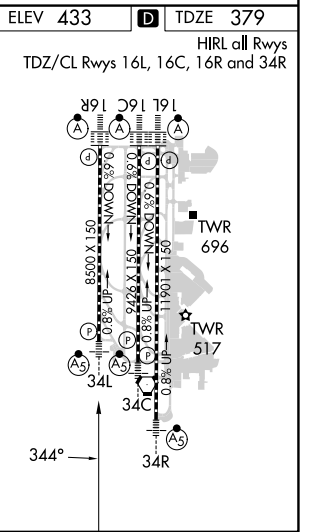
MALS

MISSED APPROACH: Climb to 900 then climbing left turn to 5000 direct LOFAL and hold.

D-ATIS 118.0	SEATTLE APP CON 133.65 273.45	SEATTLE TOWER 119.9 239.3 (Rwys 16L, 16C, 34C, 34R) 120.95 239.3 (Rwys 16R, 34L)	GND CON 121.7	CLNC DEL 128.0	CPDLC
------------------------	---	--	-------------------------	--------------------------	-------



HIPRO	JOSTA	JALON	HOVOS	LOFAL
5000	4000	2400	2400	900
344°	344°	344°	344°	344°
3.1 NM	5 NM	4.3 NM	0.6 NM	1.4 NM
GP 3.00°	TCH 55	*1040	*1.4 NM to RWY 34L	
VP	DA	579/24	200 (200-1/2)	
LNAV/VNAV	DA	808/40	429 (400-3/4)	
LNAV MDA		860/24	481 (500-1/2)	860/55 481 (500-1)
CIRCLING		1000-1	567 (600-1)	1000-1 1/2 567 (600-1 1/2) 1000-2 567 (600-2)



NW-1, 31 OCT 2024 to 28 NOV 2024

NW-1, 31 OCT 2024 to 28 NOV 2024