

LOC I-HUF 109.7	APP CRS 049°	Rwy Idg TDZE Apt Elev	9020 573 589
---------------------------	------------------------	-----------------------------	---

ILS or LOC RWY 5
TERRE HAUTE RGNL (HUF)

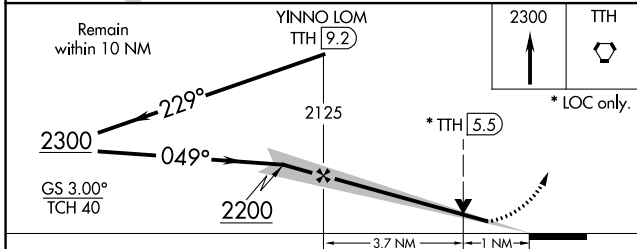
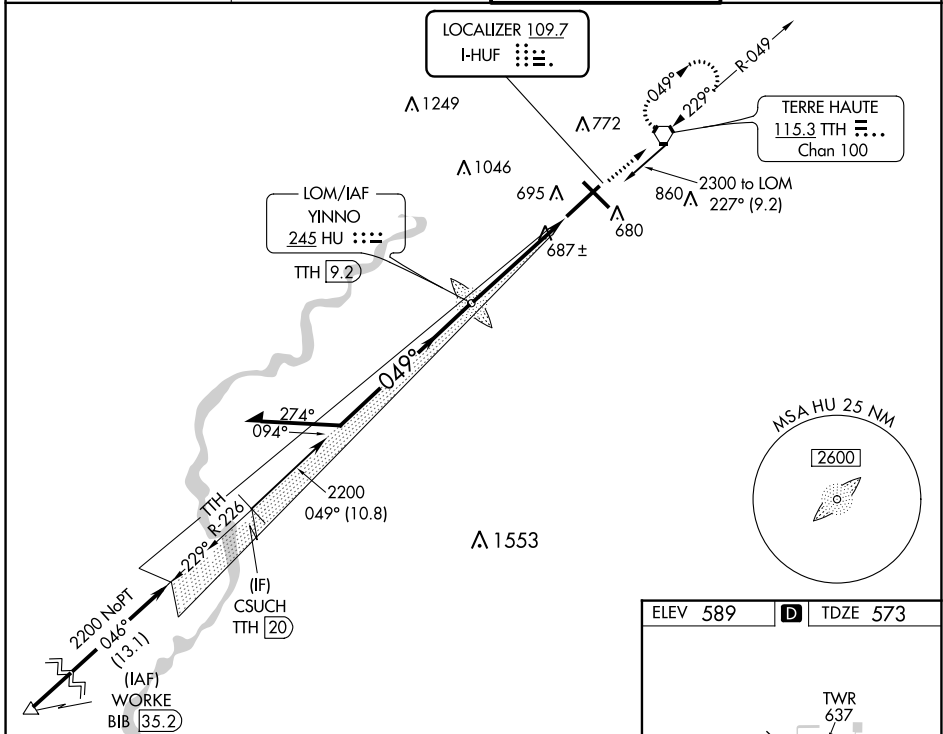
ADF or DME required.

▽ VDP NA when using Paris altimeter setting. When local altimeter setting not received, use Paris altimeter setting and increase all DA 61 feet and all MDA 80 feet, increase S-LOC 5 Cats C/D visibility to RVR 4500. For inop ALS, increase S-LOC 5 Cat C/D visibility to RVR 5500, when using Paris altimeter setting increase S-ILS 5 all Cats visibilities to RVR 4500 and S-LOC Rwy 5 all Cats visibility 1/2 SM. **RVR 1800 authorized with use of FD or AP or HUD to DA, NA when using Paris altimeter setting.

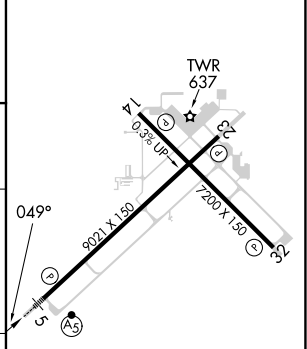
▲ MALSR

▲ MISSED APPROACH: Climb to 2300 direct TTH VORTAC and hold.

ATIS 127.5 269.375	HULMAN APP CON 125.45 339.8	HULMAN TOWER 134.725 322.475	GND CON 121.6 348.6
------------------------------	---------------------------------------	--	-------------------------------



ELEV 589	D	TDZE 573
----------	----------	----------



CATEGORY	A	B	C	D
S-ILS 5 **		773/24	200 (200-1/2)	
S-LOC 5	940/24	367 (400-1/2)	940/35	367 (400-5/8)
C CIRCLING	1040-1 451 (500-1)	1040-1 451 (500-1)	1220-1 3/4 631 (700-1 3/4)	1220-2 631 (700-2)

REIL Rwy 14, 23 and 32	
HIRL Rwy 5-23 and 14-32	
FAF to MAP 4.7 NM	
Knots	60 90 120 150 180
Min:Sec	4:42 3:08 2:21 1:53 1:34

EC-2, 31 OCT 2024 to 28 NOV 2024

EC-2, 31 OCT 2024 to 28 NOV 2024