

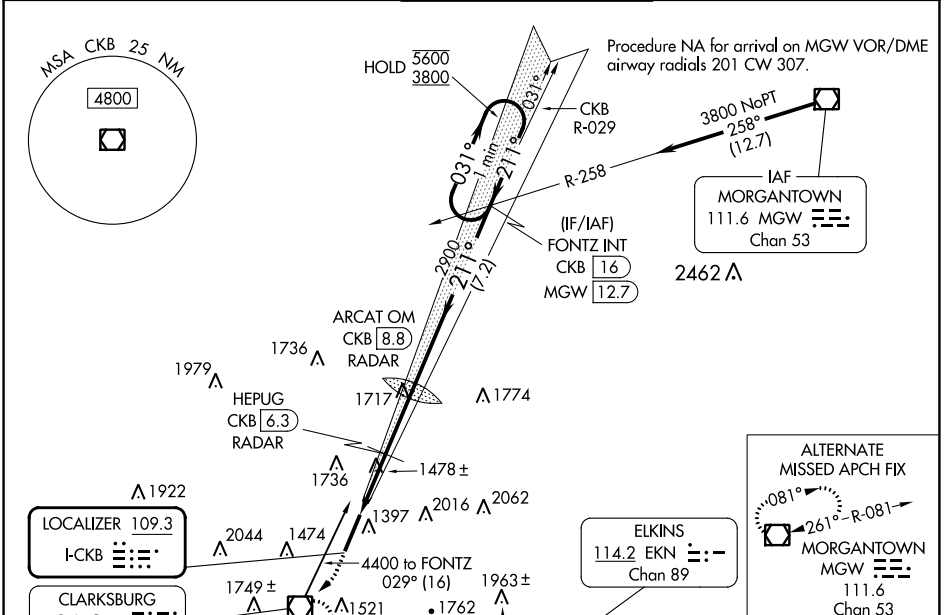
LOC I-CKB	APP CRS	Rwy Ldg	7130
109.3	211°	TDZE	1224
		Apt Elev	1224

ILS or LOC RWY 21

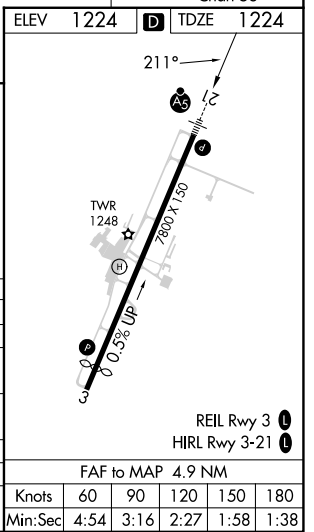
NORTH CENTRAL WEST VIRGINIA (CKB)

<p>For inop ALS, increase S-LOC 21 Cat C/D visibility to 2½ SM, and HEPUG fix minimums Cat C/D visibility to 1½ SM. DME from CKB VOR/DME. Autopilot coupled approach NA below 2000.</p>	<p>MALSR</p>	<p>MISSED APPROACH: Climb to 1800 then climbing right turn to 3200 direct CKB VOR/DME and hold, continue climb-in-hold to 3200.</p>

ATIS 127.825	CLARKSBURG APP CON ★ 121.15 284.65	CLARKSBURG TOWER ★ 126.7 (CTAF) 0 257.925	GND CON 121.9	UNICOM 123.0
------------------------	--	---	-------------------------	------------------------



ELEV 1224	TDZE 1224
1800	3200
CKB	HEPUG CKB 6.3 RADAR
ARC AT OM CKB 8.8 RADAR	FONTZ INT CKB 16
One Minute Holding Pattern	031° → 5600
*LOC only.	*CKB 5.3
2878	211° ← 3800
*2020	2900
1.4 NM	1 NM
2.5 NM	7.2 NM
GS 3.00°	TCH 60
CATEGORY	A B C D
S-ILS 21	1424/24 200 (200-½)
S-LOC 21	2020/24 796 (800-½) 2020/40 796 (800-¾) 2020-1¾ 796 (800-1¾)
CIRCLING	2020-1 796 (800-1) 2040-1¼ 816 (900-1¼) 2320-3 1096 (1100-3)
HEPUG FIX MINIMUMS (DME or RADAR REQUIRED)	
S-LOC 21	1740/24 516 (600-½) 1740/55 516 (600-1)
CIRCLING	1940-1 716 (800-1) 2040-1¼ 816 (900-1¼) 2320-3 1096 (1100-3)



NE-4, 31 OCT 2024 to 28 NOV 2024

NE-4, 31 OCT 2024 to 28 NOV 2024

FAF to MAP 4.9 NM					
Knots	60	90	120	150	180
Min:Sec	4:54	3:16	2:27	1:58	1:38