

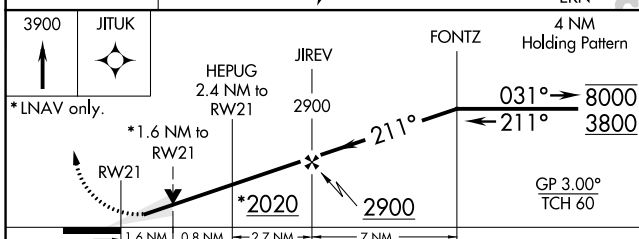
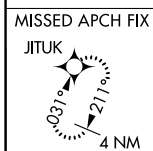
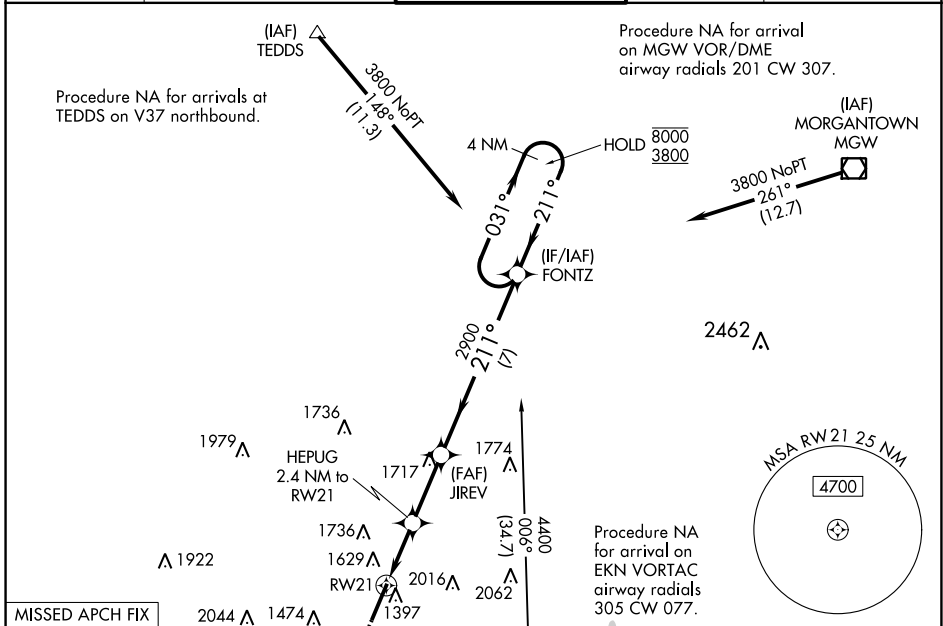
WAAS CH 82504 W21A	APP CRS 211°	Rwy Idg 7130
		TDZE 1224
		Apt Elev 1224

RNAV (GPS) RWY 21

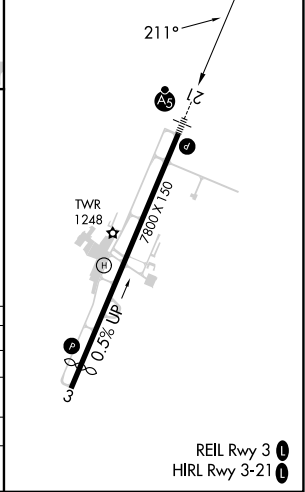
NORTH CENTRAL WEST VIRGINIA (CKB)

RNP APCH.		MALSR	MISSED APPROACH: Climb to 3900 direct JITUK and hold.
<p>▼ For uncompensated Baro-VNAV systems, LNAV/VNAV NA below -16°C or above 54°C. For inop ALS, increase LNAV Cats C and D visibility to 1½ SM.</p>			

ATIS 127.825	CLARKSBURG APP CON ★ 121.15 284.65	CLARKSBURG TOWER ★ 126.7 (CTAF) 257.925	GND CON 121.9	UNICOM 123.0
------------------------	--	---	-------------------------	------------------------



ELEV 1224	D TDZE 1224
-----------	--------------------



CATEGORY	A	B	C	D
LPV DA		1424/24	200 (200-½)	
LNAV/VNAV DA		1786-1¾	562 (600-1¾)	
LNAV MDA	1800/24	576 (600-½)	1800-1¼	576 (600-1¼)
C CIRCLING	1940-1 716 (800-1)	2040-1¼ 816 (900-1¼)	2320-3	1096 (1100-3)

NE-4, 31 OCT 2024 to 28 NOV 2024

NE-4, 31 OCT 2024 to 28 NOV 2024