

VOR/DME CKB <b>112.6</b> Chan <b>73</b>	APP CRS <b>042°</b>	Rwy Idg TDZE Apt Elev <b>N/A</b> <b>N/A</b> <b>1224</b>
---	------------------------	--

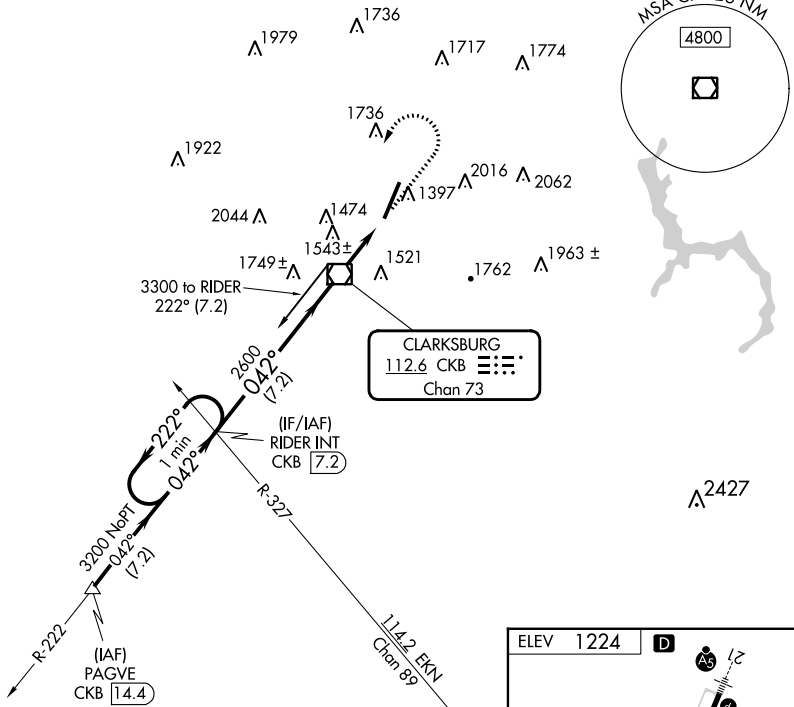
# VOR-A

## NORTH CENTRAL WEST VIRGINIA (CKB)

**▼** When local altimeter setting not received, Use Morgantown altimeter  
**▲**

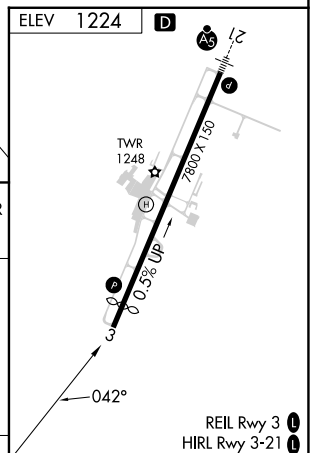
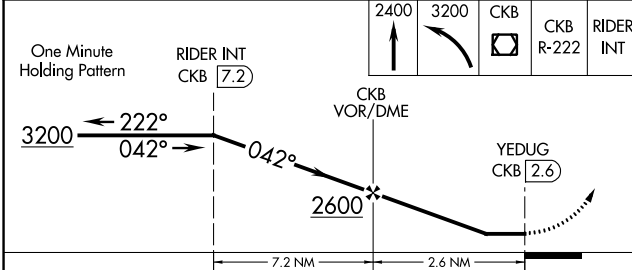
**MISSED APPROACH:** Climb to 2400, then climbing left turn to 3200 direct CKB VOR/DME and via CKB VOR/DME R-222 to RIDER INT/CKB 7.2 DME and hold.

ATIS <b>127.825</b>	CLARKSBURG APP CON* <b>121.15 284.65</b>	CLARKSBURG TOWER* <b>126.7 (CTAF) 257.925</b>	GND CON <b>121.9</b>	UNICOM <b>123.0</b>
------------------------	---	--	-------------------------	------------------------



NE-4, 31 OCT 2024 to 28 NOV 2024

NE-4, 31 OCT 2024 to 28 NOV 2024



CATEGORY	A	B	C	D
	1940-1 716 (800-1)	2040-1 ¼ 816 (900-1 ¼)	2320-3	1096 (1100-3)
<b>C</b> CIRCLING				

FAF to MAP 2.6 NM					
Knots	60	90	120	150	180
Min:Sec	2:36	1:44	1:18	1:02	0:52

# VOR-A