

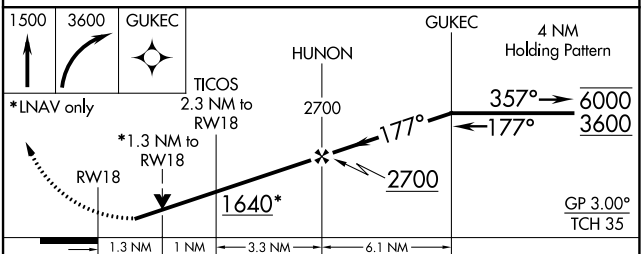
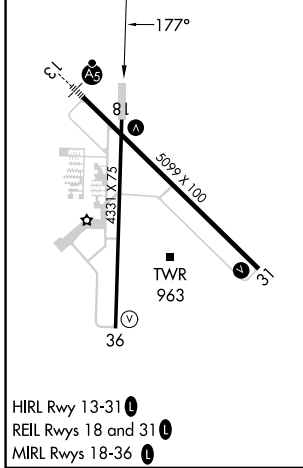
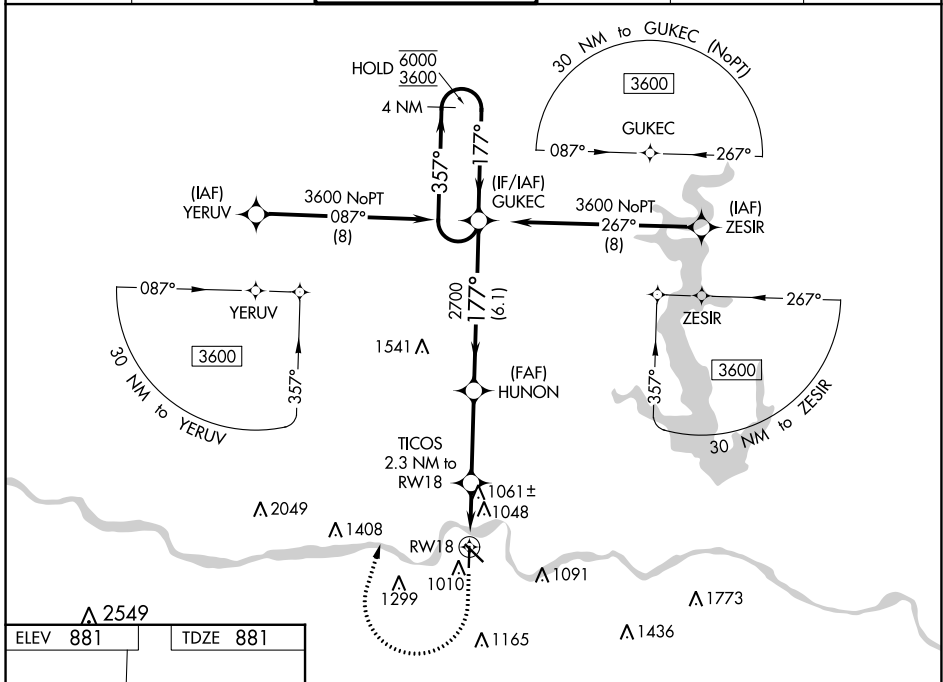
WAAS CH 53634 W18A	APP CRS 177°	Rwy Idg TDZE Apt Elev	4331 881 881
--	------------------------	-----------------------------	---

RNAV (GPS) RWY 18

PHILIP BILLARD MUNI (TOP)

RNP APCH.	▼ Rwy 18 helicopter visibility reduction below 3/4 SM NA. For uncompensated Baro-VNAV systems, LNAV/VNAV NA below -19°C or above 54°C.	MISSED APPROACH: Climb to 1500 then climbing right turn to 3600 direct GUKEC and hold.
-----------	---	--

ASOS 121.275	KANSAS CITY CENTER 123.8 343.7	TOPEKA TOWER * 118.7 (CTAF) 0 257.8	GND CON 121.9	CLNC DEL 121.9	UNICOM 122.95
------------------------	--	---	-------------------------	--------------------------	-------------------------



CATEGORY	A	B	C	D
LPV DA	1174-1 293 (300-1)			NA
LNAV/VNAV DA	1340-1½ 459 (500-1½)			NA
LNAV MDA	1320-1 439 (500-1)	1320-1¼ 439 (500-1¼)		NA
CIRCLING	1360-1 479 (500-1)	1440-1 559 (600-1)	1600-2 719 (800-2)	NA

NC-2, 31 OCT 2024 to 28 NOV 2024

NC-2, 31 OCT 2024 to 28 NOV 2024