

# ILS or LOC/DME RWY 4

NEW ORLEANS NAS JRB  
(ALVIN CALLENDER FLD) (KNBG)

LOC I-NBG <b>109.5</b>	APCH CRS <b>044°</b>	Rwy ldg TDZE Arpt Elev <b>10,000</b> <b>-2</b> <b>2</b>
---------------------------	-------------------------	--

AL-630 [USN]

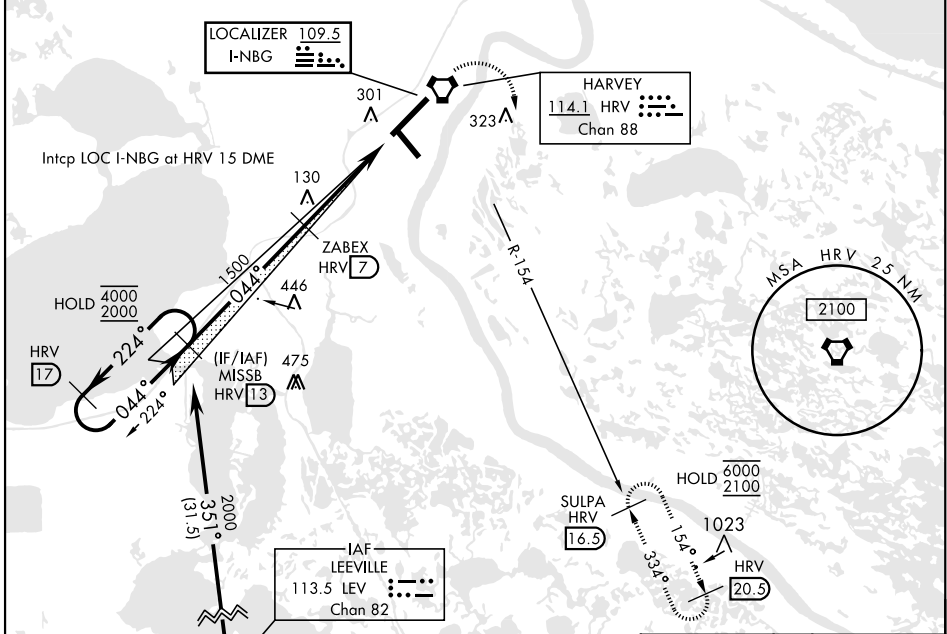
RNAV or ATC RADAR monitoring required.  
 ▼ \* When ALS inop, increase vis to ¾ mile.



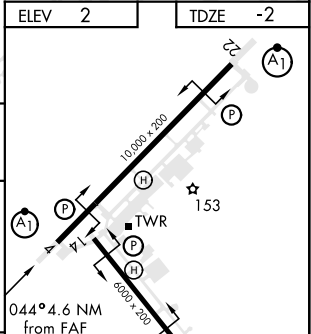
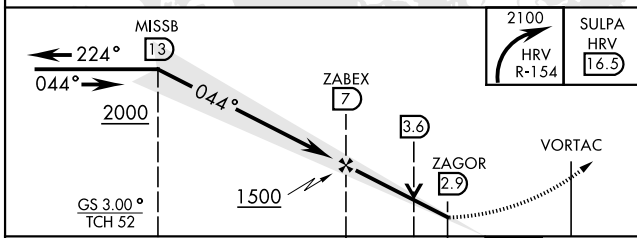
MISSED APPROACH: Execute climbing right turn to 2100, intercept HRV VORTAC R-154 to SULPA. Cross 10 DME at 2000. Hold at SULPA.

ATIS * <b>279.55</b>	APP CON <b>123.85 256.9</b>	NAVY NEW ORLEANS TOWER * <b>123.8 340.2</b> (CTAF)	GND CON <b>121.6 270.35</b>	CLNC DEL <b>128.35 263.0</b>	ASR/ PAR
-------------------------	--------------------------------	---	--------------------------------	---------------------------------	----------

\*\* When ALS inop, increase CAT AB vis to 1 mile; CAT CDE vis to 1¼ miles  
 \*\*\* Circling NA for CAT E NW of Rwy 4-22.



ELEV 2	TDZE -2
--------	---------



CATEGORY	A	B	C	D	E
S-ILS 4 *	198-½		200	(200-½)	
S-LOC 4 **	420-½ 422 (500-½)		420-¾ 422 (500-¾)		
*** CIRCLING	640-1 638 (700-1)		640-1¾ 638 (700-1¾)	640-2 638 (700-2)	640-2¼ 638 (700-2¼)

FAF to MAP 4.1 NM					
Knots	60	90	120	150	180
Min:Sec	4:06	2:44	2:03	1:38	1:22

NEW ORLEANS, LOUISIANA  
 Amdt 3 04NOV21  
 29°50'N-90°02'W  
 NEW ORLEANS NAS JRB (KNBG)  
 (ALVIN CALLENDER FLD)

# ILS or LOC/DME RWY 4

SC-4, 31 OCT 2024 to 28 NOV 2024

SC-4, 31 OCT 2024 to 28 NOV 2024