

LOC I-GKV 111.3	APP CRS 080°	Rwy Idg TDZE Apt Elev	9318 469 469
---------------------------	------------------------	-----------------------------	---

ILS or LOC RWY 8

FORT SMITH RGNL (FSM)

DME and RADAR required.

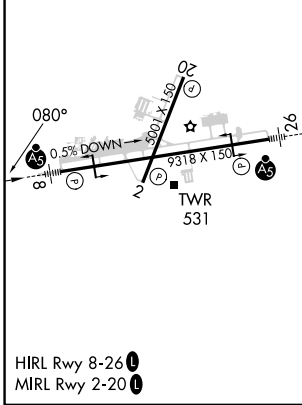
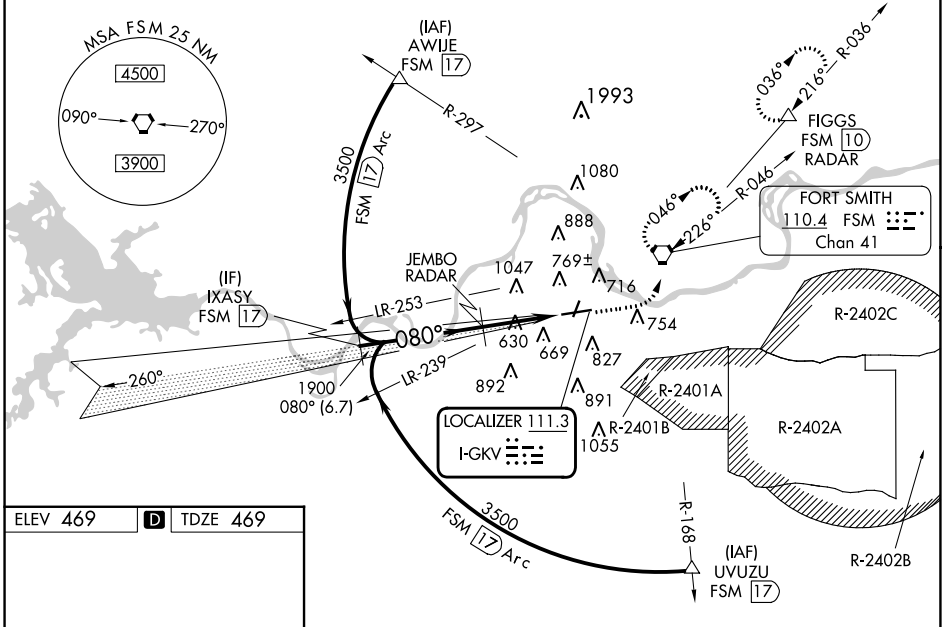
ASR

Circling NA for Cat E northwest of Rws 8 and 20. Circling Rwy 20, 26 NA at night. For inop ALS, increase S-ILS 8 Cat E visibility to 3/4 SM, increase S-LOC 8, Cat C/D/E visibility to 1 1/2 SM. Circling NA for Cat E when restricted area R-2401B active. DME from FSM VORTAC. DME use requires simultaneous reception of I-GKV and FSM DME.

MALSR

MISSED APPROACH: Climb to 1000 then climbing left turn to 3300 direct FSM VORTAC and hold, continue climb-in-hold to 3300. (TACAN aircraft continue climb to 4000 on FSM R-036 to FIGGS/10 DME/RADAR and hold NE, RT, 216° inbound, continue climb-in-hold to 4000.)

ATIS 124.775	RAZORBACK APP CON ★ 120.9 343.75	FORT SMITH TOWER ★ 118.3 (CTAF) 323.175	GND CON 121.9 275.8	CLNC DEL 133.85 278.3	UNICOM 122.95
------------------------	--	---	-------------------------------	---------------------------------	-------------------------



ELEV 469	D	TDZE 469			
GS 3.00°	TCH 52				
CATEGORY	A	B	C	D	E
S-ILS 8	669-1/2 200 (200-1/2)				
S-LOC 8	880-1/2	411 (500-1/2)	880-3/4	411 (500-3/4)	
C CIRCLING	1140-1	671 (700-1)	1400-2 3/4 931 (1000-2 3/4)	1400-3	931 (1000-3)

SC-1, 31 OCT 2024 to 28 NOV 2024

SC-1, 31 OCT 2024 to 28 NOV 2024