

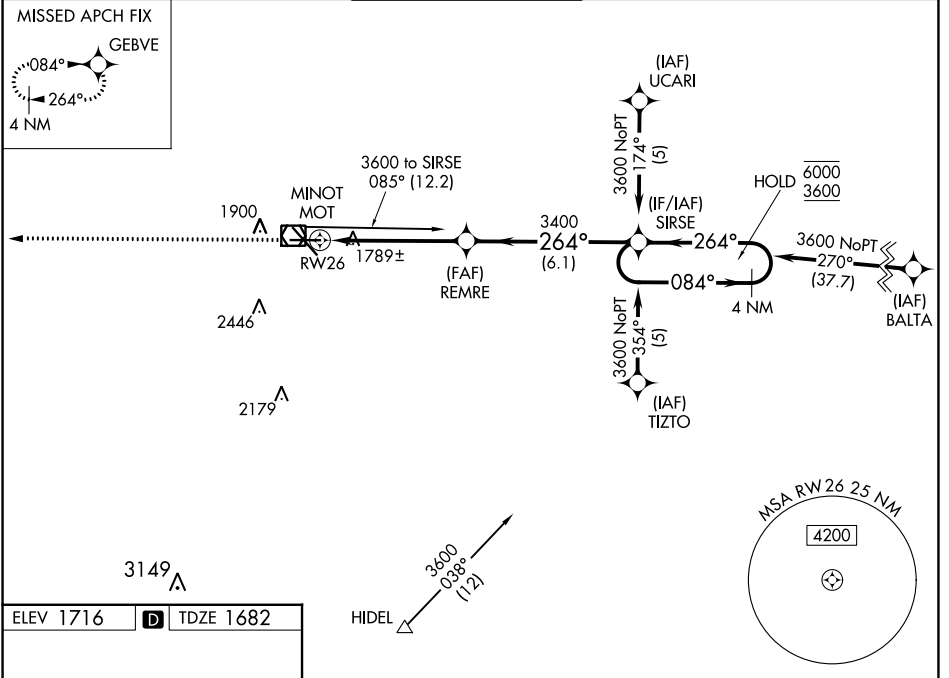
WAAS CH 56516 W26A	APP CRS 264°	Rwy Idg TDZE Apt Elev	6348 1682 1716
--	------------------------	-----------------------------	---

RNAV (GPS) RWY 26

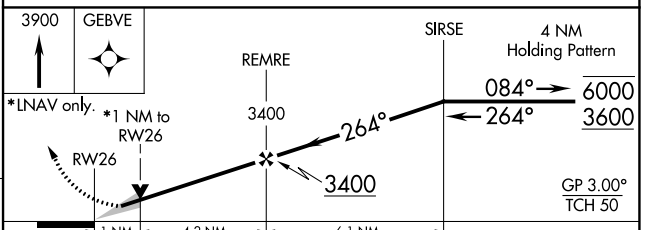
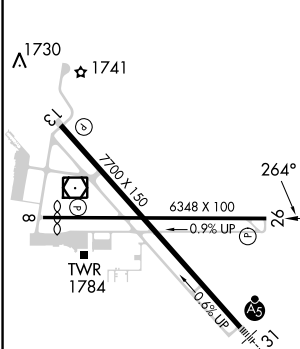
MINOT INTL (MOT)

RNP APCH.		MISSED APPROACH: Climb to 3900 direct GEBVE and hold.	
	For uncompensated Baro-VNAV systems, LNAV/VNAV NA below -18°C or above 54°C.		

ASOS 118.725	MINOT APP CON * 119.6 363.8	MAGIC CITY TOWER * 118.2 (CTAF) 0 251.125	GND CON 121.9	UNICOM 122.95
------------------------	---------------------------------------	---	-------------------------	-------------------------



ELEV 1716	D	TDZE 1682
-----------	----------	-----------



CATEGORY	A	B	C	D
LPV DA	1932-1 250 (300-1)			
LNAV/VNAV DA	1932-1 250 (300-1)			
LNAV MDA	2040-1	358 (400-1)	2040-1 $\frac{3}{8}$	358 (400-1 $\frac{3}{8}$)
CIRCLING	2200-1 484 (500-1)	2240-1 524 (600-1)	2800-3 1084 (1100-3)	

REIL Rwy 13
REIL Rwy 8 and 26
HIRL Rwy 8-26 and 13-31

NC-1, 31 OCT 2024 to 28 NOV 2024

NC-1, 31 OCT 2024 to 28 NOV 2024