

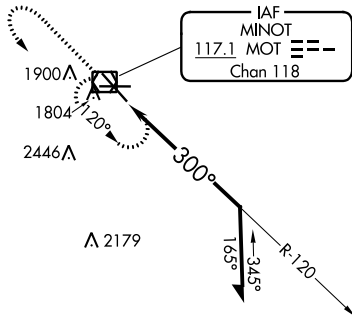
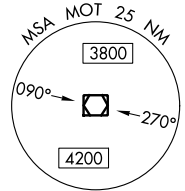
VOR/DME MOT 117.1 Chan 118	APP CRS 300°	Rwy Idg 7700 TDZE 1679 Apt Elev 1716
--	------------------------	---

VOR RWY 31

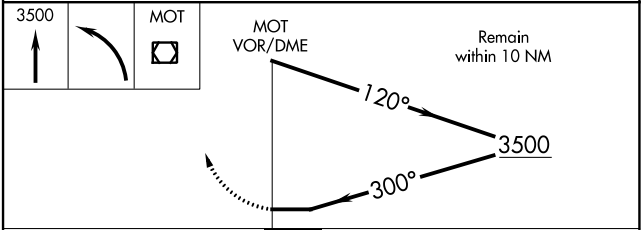
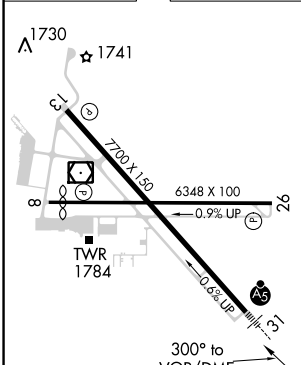
MINOT INTL (MOT)

		MISSED APPROACH: Climb to 3500 then left turn direct MOT VOR/DME and hold.

ASOS 118.725	MINOT APP CON * 119.6 363.8	MAGIC CITY TOWER * 118.2 (CTAF) 251.125	GND CON 121.9	UNICOM 122.95
------------------------	---------------------------------------	---	-------------------------	-------------------------



ELEV 1716	D	TDZE 1679
-----------	----------	-----------



CATEGORY	A	B	C	D
S-31	2200/24	521 (500-½)	2200/55 521 (500-1)	2200/60 521 (500-1¼)
CIRCLING	2200-1 484 (500-1)	2240-1 524 (600-1)	2800-3 1084 (1100-3)	

REIL Rwy 13
REIL Rwy 8 and 26
HIRL Rwy 8-26 and 13-31

NC-1, 31 OCT 2024 to 28 NOV 2024

NC-1, 31 OCT 2024 to 28 NOV 2024