

WAAS CH 77620 W05A	APP CRS 054°	Rwy Idg TDZE Apt Elev	8204 1199 1226
--	------------------------	-----------------------------	---

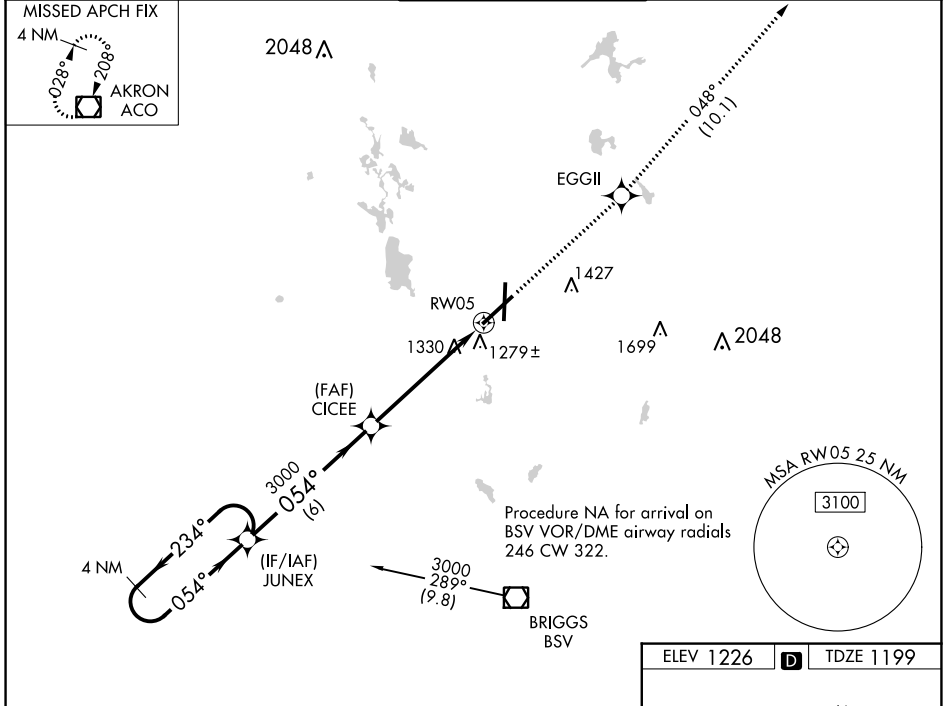
RNAV (GPS) RWY 5

AKRON-CANTON RGNL (CAK)

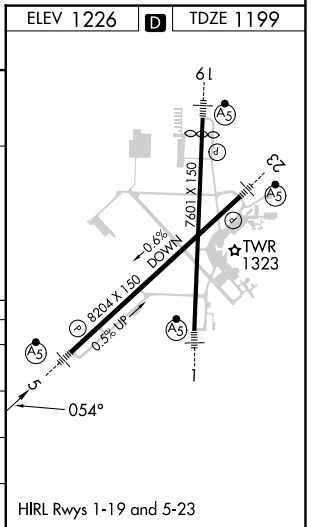
▼ For uncompensated Baro-VNAV systems, LNAV/VNAV NA below -17°C (2°F) or above 46°C (114°F). DME/DME RNP-0.3 NA.
 ** RVR 1800 authorized with use of FD or AP or HUD to DA.

MALSR MISSED APPROACH: Climb to 3000 direct EGGII and on track 048° to ACO VOR/DME and hold.

ATIS 121.05	CLEVELAND APP CON * 125.5 269.25	AKRON-CANTON TOWER 134.75 279.575	GND CON 121.7 348.6	CLNC DEL 132.05
-----------------------	--	---	-------------------------------	---------------------------



4 NM Holding Pattern	JUNEX		CICEE		3000	EGGII	ACO
	← 234°		→ 054°		3000	tr 048°	☐
GP 3.00° TCH 50	6 NM		4.2 NM		* 1.3 NM to RWY5		
CATEGORY	A	B	C	D			
LPV DA**	1399/24		200 (200-½)				
LNAV/VNAV DA	1577/50		378 (400-1)				
LNAV MDA	1640/24	441 (500-½)	1640/40 441 (500-¾)	1640/50 441 (500-1)			
CIRCLING	1760-1	534 (600-1)	1780-1½ 554 (600-1½)	1800-2 574 (600-2)			



EC-2, 31 OCT 2024 to 28 NOV 2024

EC-2, 31 OCT 2024 to 28 NOV 2024