

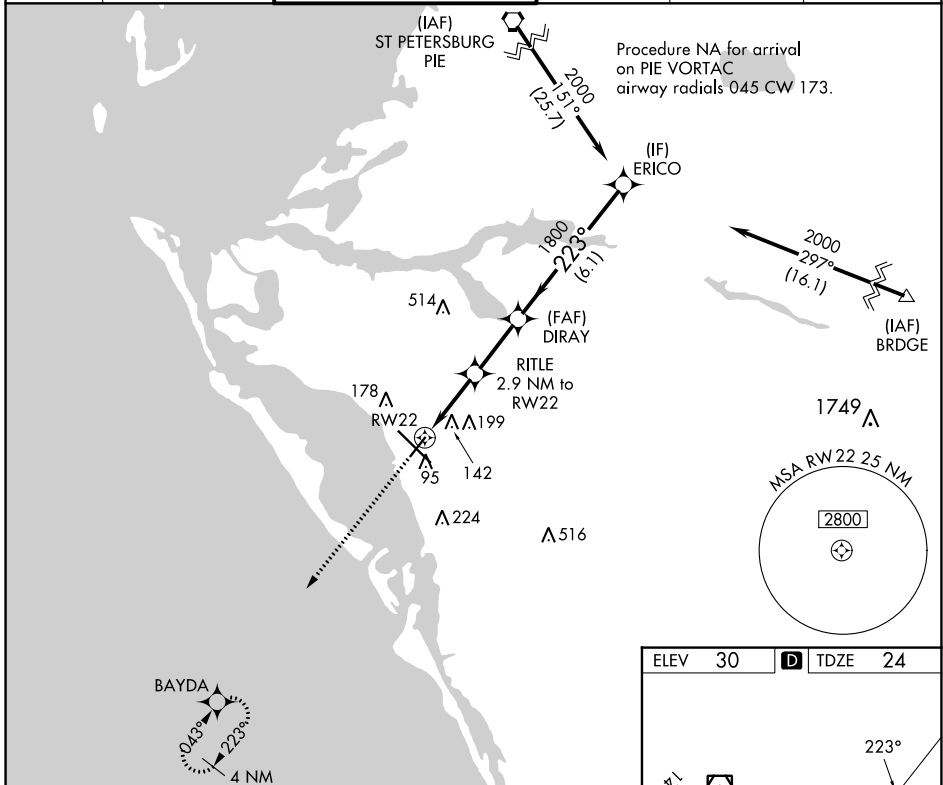
APP CRS	Rwy Idg	<b>5006</b>
<b>223°</b>	TDZE	<b>24</b>
	Apt Elev	<b>30</b>

# RNAV (GPS) RWY 22

SARASOTA/BRADENTON INTL (SRQ)

RNP APCH.		MISSED APPROACH: Climb to 2000 direct BAYDA and hold.			
<p><b>▼</b> Rwy 22 helicopter visibility reduction below 1 SM NA. For uncompensated Baro-VNAV systems, LNAV/VNAV NA below -1.5°C or above 43°C.</p>					

ATIS	TAMPA APP CON	SARASOTA TOWER*	GND CON	CLNC DEL	UNICOM
<b>124.375</b>	<b>119.65 353.575</b>	<b>120.1(CTAF) 256.8</b>	<b>121.9 273.6</b>	<b>118.25</b>	<b>122.95</b>



SE-3, 31 OCT 2024 to 28 NOV 2024

SE-3, 31 OCT 2024 to 28 NOV 2024

ELEV	30	TDZE	24
<p>2000 BAYDA</p> <p>VGSI and RNAV glidepath not coincident (VGSI Angle 3.00/TCH 43).</p> <p>*LNAV only.</p> <p>RWY 22</p> <p>RITL 2.9 NM to RWY 22</p> <p>DIRAY 1800</p> <p>ERICO 2000</p> <p>GP 3.00° TCH 57</p> <p>2.9 NM   2.5 NM   6.1 NM</p>			
CATEGORY	A	B	C
LNAV/VNAV DA	303-1 279 (300-1)		
LNAV MDA	400-1 376 (400-1)		
CIRCLING	500-1 470 (500-1)	600-1½ 570 (600-1½)	600-2 570 (600-2)