

WAAS CH 77906 W03A	APP CRS 030°	Rwy Idg 6780 TDZE 830 Apt Elev 859
--	------------------------	---

RNAV (GPS) RWY 3

MID-OHIO VALLEY RGNL (PKB)

RNP APCH.

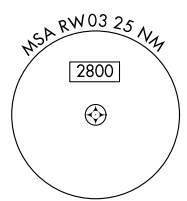
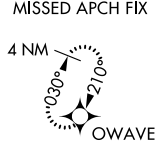
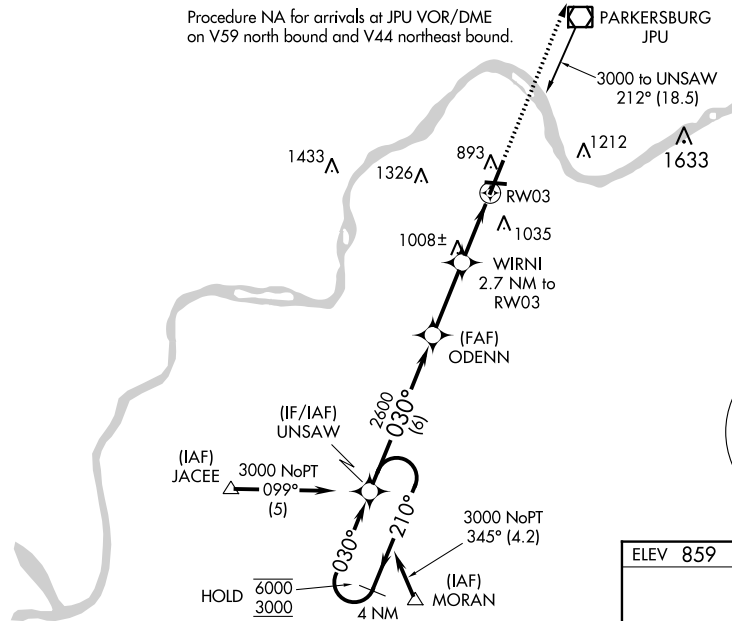
- ▼ Circling Rwy 10, 28 NA at night. Rwy 3 helicopter visibility reduction below RVR 4000 NA.
- ▲ For uncompensated Baro-VNAV systems, LNAV/VNAV NA below -17°C or above 38°C.
- ▲ When local altimeter setting not received, use Athens/Albany altimeter setting: increase LPV DA to 1302 feet and visibility all Cats ¼ SM; increase LNAV/VNAV DA to 1436 feet and visibility all Cats ¼ SM; increase all MDAs 100 feet and visibility Cats C and D ½ SM. For inop ALS, increase LNAV/VNAV all Cats visibility to 1½ SM and LNAV Cats A/B visibility to RVR 5500. For inop ALS, when using Athens/Albany altimeter setting, increase LPV all Cats visibility to 1½ SM and LNAV/VNAV all Cats visibility to 1¾ SM.



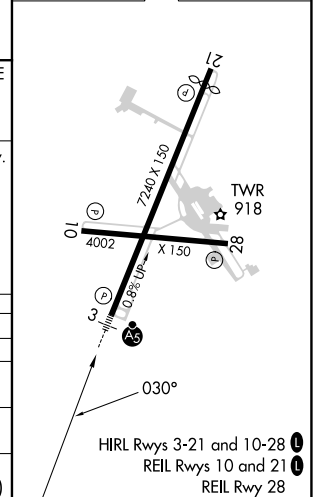
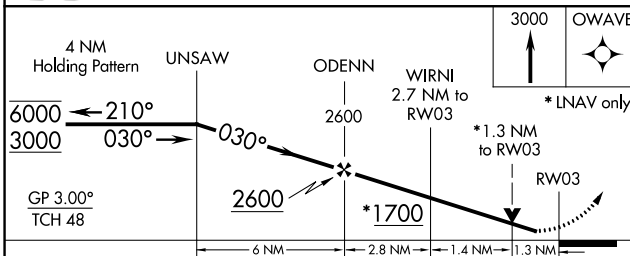
MISSED APPROACH:
Climb to 3000 direct
OWAVE and hold.

ATIS 124.35	INDIANAPOLIS CENTER 125.55 317.475	PARKERSBURG TOWER * 123.7 (CTAF) 257.8	GND CON 126.45	UNICOM 122.95
-----------------------	--	--	--------------------------	-------------------------

Procedure NA for arrivals at JPU VOR/DME on V59 north bound and V44 northeast bound.



ELEV 859	D TDZE 830
----------	-------------------



CATEGORY	A	B	C	D
LPV DA		1202/40	372 (400-¾)	
LNAV/VNAV DA		1336/60	505 (500-1½)	
LNAV MDA		1260/40	430 (500-¾)	
CIRCLING	1320-1 461 (500-1)	1380-1 521 (600-1)	1640-2¼ 781 (800-2¼)	1640-2½ 781 (800-2½)

NE-4, 31 OCT 2024 to 28 NOV 2024

NE-4, 31 OCT 2024 to 28 NOV 2024

HIRL Rwy 3-21 and 10-28
REIL Rwy 10 and 21
REIL Rwy 28