

LOC/DME I-EKW <b>110.9</b> Chan 46	APP CRS <b>289°</b>	Rwy Idg TDZE Apt Elev <b>7001</b> <b>990</b> <b>1009</b>
--	------------------------	---

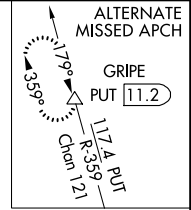
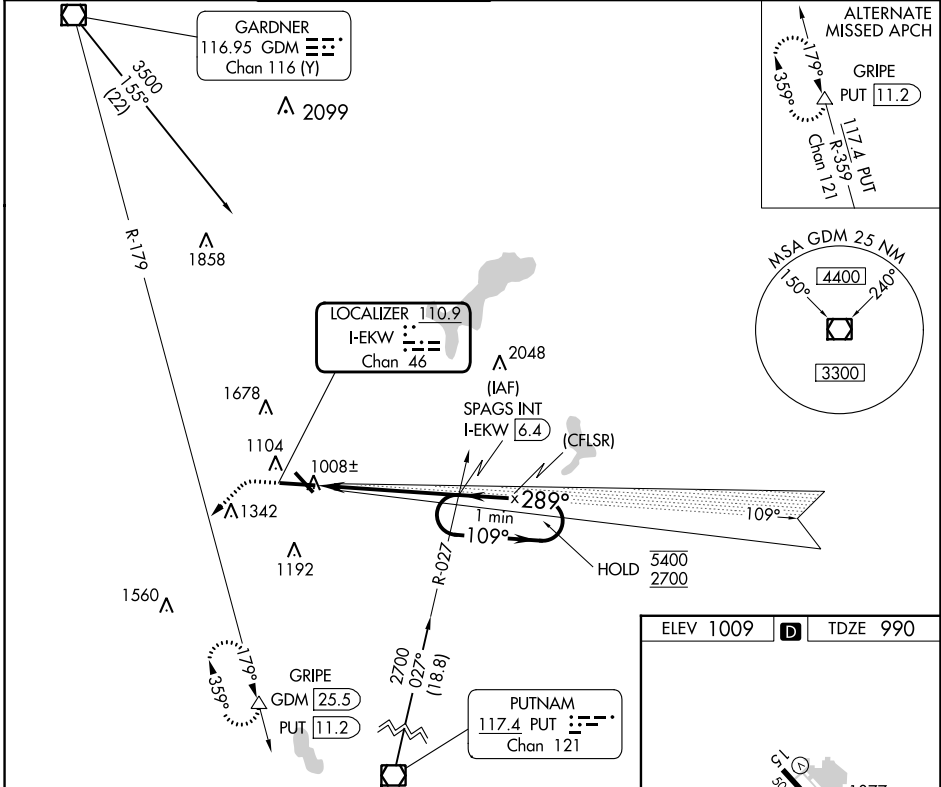
# ILS or LOC RWY 29

WORCESTER RGNL (ORH)

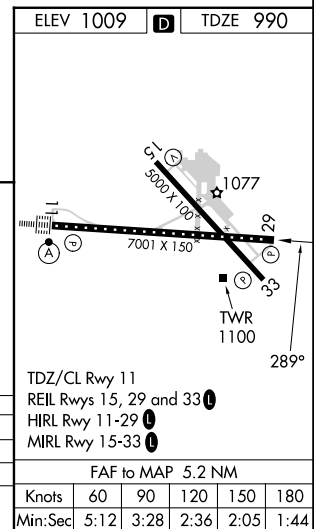
**Autopilot coupled approach NA below 1430 feet.**

**MISSED APPROACH:** Climb to 1600 then climbing left turn to 3000 on heading 240° and on GDM VOR/DME R-179 to GRIPE INT/GDM 25.5 DME and hold, continue climb-in-hold to 3000.

ATIS <b>126.55</b>	BRADLEY APP CON <b>119.0 327.1</b>	<b>WORCESTER TOWER*</b> <b>120.5 (CTAF) 263.0</b>	GND CON <b>123.85</b>	CLNC DEL <b>128.65</b>	CLNC DEL <b>119.0</b> (When twr closed)	UNICOM <b>122.95</b>
-----------------------	---------------------------------------	--	--------------------------	---------------------------	---	-------------------------



1600	3000	GDM	GRIPE	SPAGS INT I-EKW 6.4	One Minute Holding Pattern
↑	hdg 240°	R-179	△	2700	
I-EKW 1.2		I-EKW 2.3		109° → 5400	GS 3.00° TCH 54
← 289°				← 289°	
1.1 NM		4.1 NM			
CATEGORY	A	B	C	D	
S-ILS 29		1190/40	200 (200-3/4)		
S-LOC 29		1380/55	390 (400-1)		
<b>CIRCLING</b>	1560-1 551 (600-1)	1740-1 731 (800-1)	2000-3 991 (1000-3)		



NE-1, 31 OCT 2024 to 28 NOV 2024

NE-1, 31 OCT 2024 to 28 NOV 2024