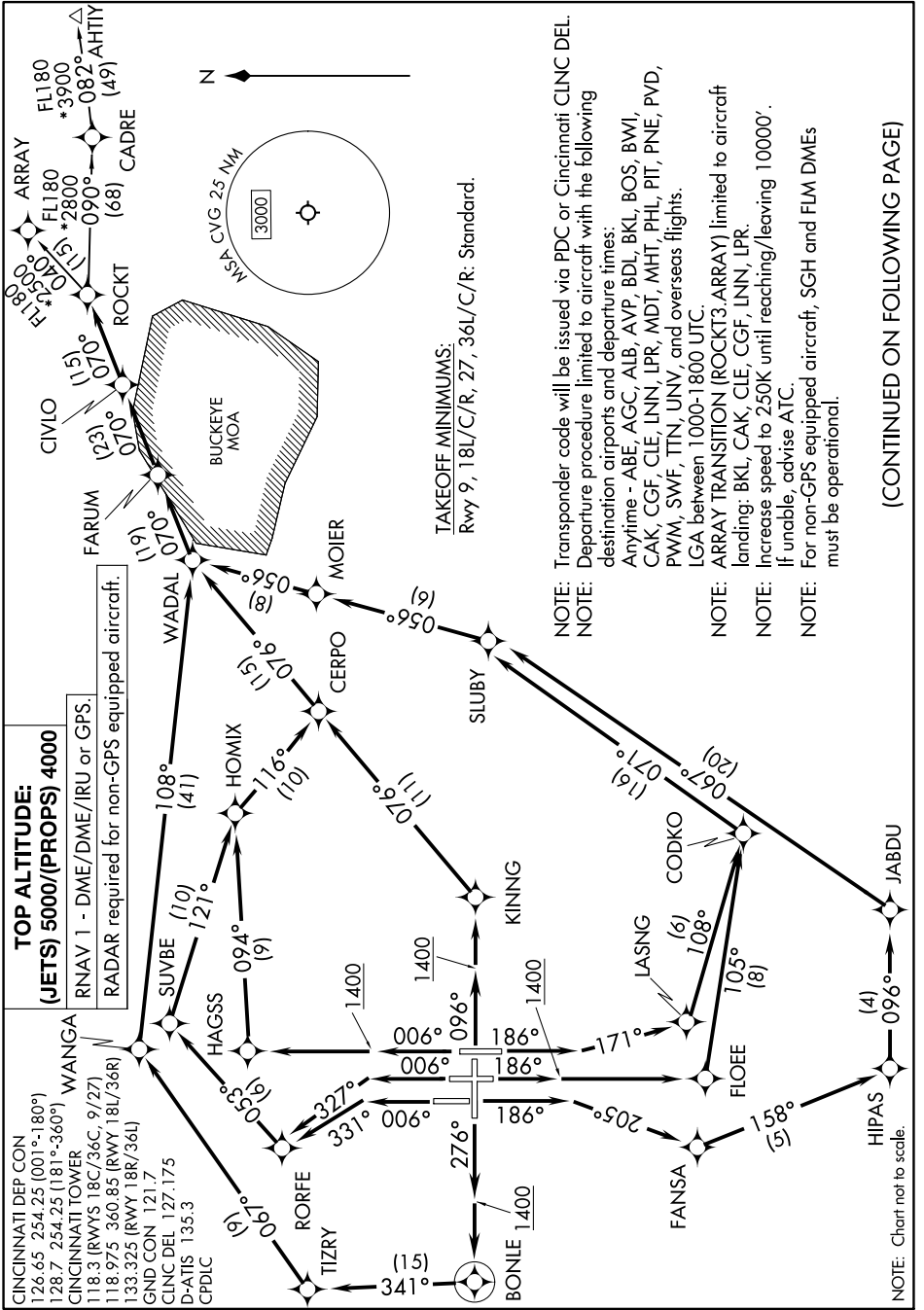


ROCKT THREE DEPARTURE (RNAV)

AL-655 (FAA)

COVINGTON, KENTUCKY

SE-1, 31 OCT 2024 to 28 NOV 2024



TOP ALTITUDE:
(JETS) 5000/(PROPS) 4000

RNAV 1 - DME/DME/IRU or GPS.
 RADAR required for non-GPS equipped aircraft.

CINCINNATI DEP CON
 126.65 254.25 (001°-180°)
 128.7 254.25 (181°-360°)
 CINCINNATI TOWER
 118.3 (RWYS 18C/36C, 9/27)
 118.975 360.85 (RWY 18L/36R)
 133.325 (RWY 18R/36L)
 GND CON 121.7
 CLNC DEL 127.175
 D-ATIS 135.3
 CPDLC

TAKEOFF MINIMUMS:
 Rwy 9, 18L/C/R, 27, 36L/C/R: Standard.

NOTE: Transponder code will be issued via PDC or Cincinnati CLNC DEL.
NOTE: Departure procedure limited to aircraft with the following destination airports and departure times:
 Anytime - ABE, AGC, ALB, AYP, BDL, BKL, BOS, BWI, CAK, CGF, CLE, LNN, LPR, MDT, MHT, PHL, PIT, PNE, PVD, PWM, SWF, TTN, UNV, and overseas flights.
NOTE: LGA between 1000-1800 UTC.
NOTE: ARRAY TRANSITION (ROCKT3.ARRAY) limited to aircraft landing: BKL, CAK, CLE, CGF, LNN, LPR.
NOTE: Increase speed to 250K until reaching/leaving 10000'.
NOTE: If unable, advise ATC.
NOTE: For non-GPS equipped aircraft, SGH and FLM DMEs must be operational.

(CONTINUED ON FOLLOWING PAGE)

SE-1, 31 OCT 2024 to 28 NOV 2024

ROCKT THREE DEPARTURE (RNAV)