

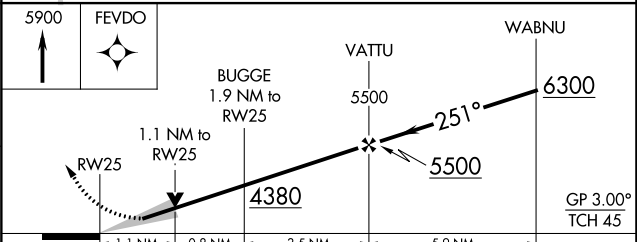
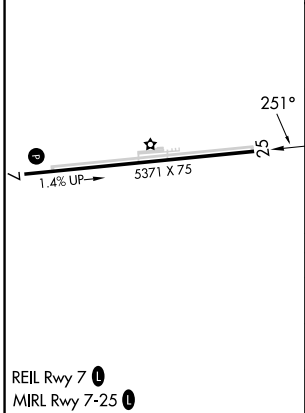
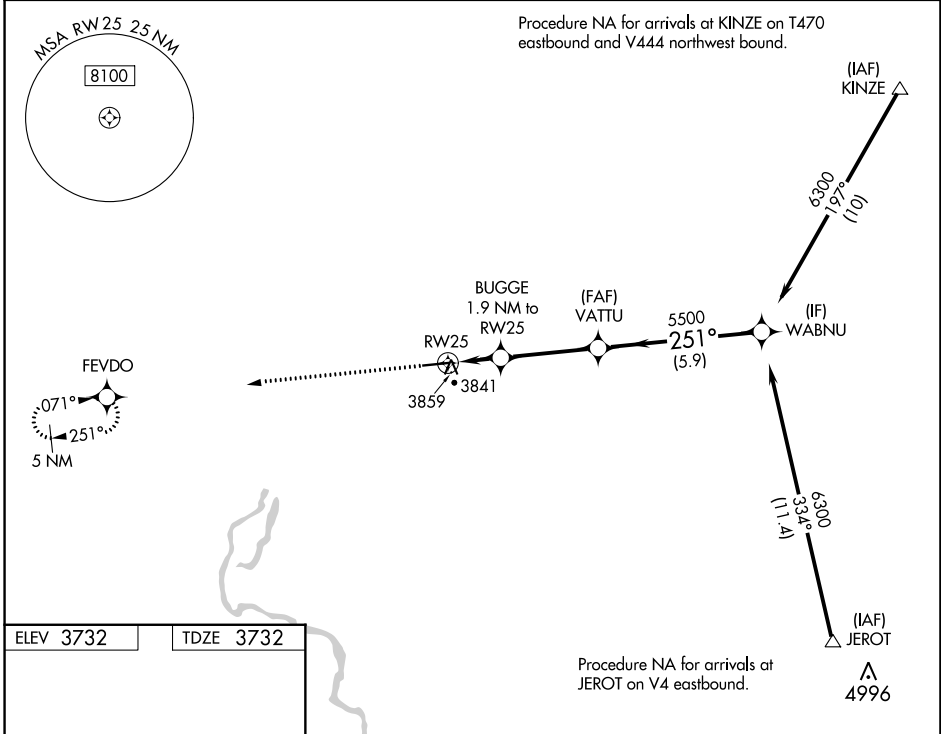
WAAS CH 45909 W25A	APP CRS 251°	Rwy Idg 5371 TDZE 3732 Apt Elev 3732
--	------------------------	---

RNAV (GPS) RWY 25

GOODING MUNI (GNG)

RNP APCH - GPS.	MISSED APPROACH: Climb to 5900 direct FEVDO and hold.
<p>▼ For uncompensated Baro-VNAV systems, LNAV/VNAV NA below -22°C or above 54°C.</p> <p>▲</p>	

AWOS-3PT 124.175	SALT LAKE CENTER 118.05 363.0	UNICOM 122.8 (CTAF) 0
----------------------------	---	---------------------------------



CATEGORY	A	B	C	D
LPV DA		3982- ³ / ₄	250 (300- ³ / ₄)	
LNAV/VNAV DA		4020- ⁷ / ₈	288 (300- ⁷ / ₈)	
LNAV MDA	4120-1	388 (400-1)	4120-1 ¹ / ₈	388 (400-1 ¹ / ₈)

NW-1, 31 OCT 2024 to 28 NOV 2024

NW-1, 31 OCT 2024 to 28 NOV 2024