

CRESO FIVE ARRIVAL

AL-662 (FAA)

HARRY REID INTL (LAS)
LAS VEGAS, NEVADA

LAS VEGAS APP CON
125.475 307.25
D-ATIS
132.4
LAS VEGAS TOWER
118.75 257.8 (Rwy 1L/19R, 1R/19L)
119.9 257.8 (Rwy 8L/26R, 8R/26L)

RADAR required

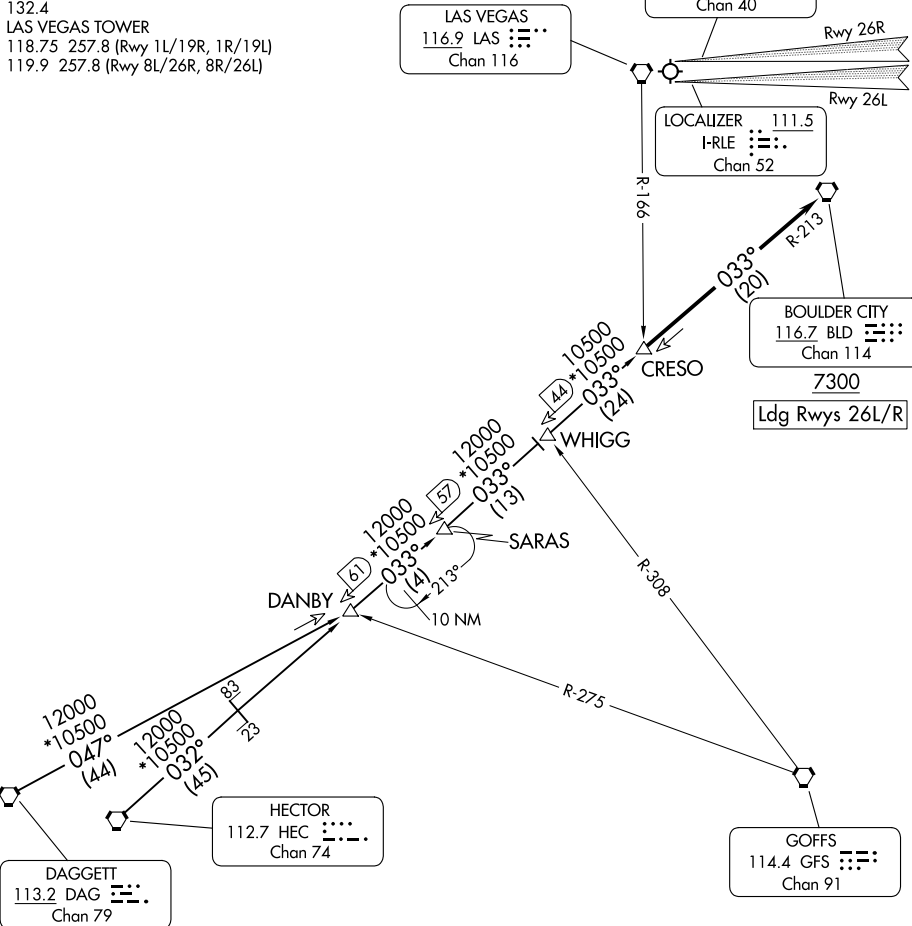
LAS VEGAS
116.9 LAS :...:
Chan 116

LOCALIZER 110.3
I-LAS :...:
Chan 40

LOCALIZER 111.5
I-RLE :...:
Chan 52

BOULDER CITY
116.7 BLD :...:
Chan 114

7300
Ldg Rwys 26L/R



NOTE: Chart not to scale.

ARRIVAL ROUTE DESCRIPTION

DAGGETT TRANSITION (DAG.CRESO5): From over DAG VORTAC on DAG R-047 and BLD R-213 to CRESO, thence. . . .

HECTOR TRANSITION (HEC.CRESO5): From over HEC VORTAC on HEC R-032 and BLD R-213 to CRESO, thence. . . .

. . . .From over CRESO on BLD R-213 to cross BLD VORTAC at or above 7300. Runways 1, 8, and 19 expect RADAR vectors to final approach course. From BLD VORTAC expect ILS approach Runway 26L/R.

CRESO FIVE ARRIVAL

SW-4, 31 OCT 2024 to 28 NOV 2024

SW-4, 31 OCT 2024 to 28 NOV 2024