

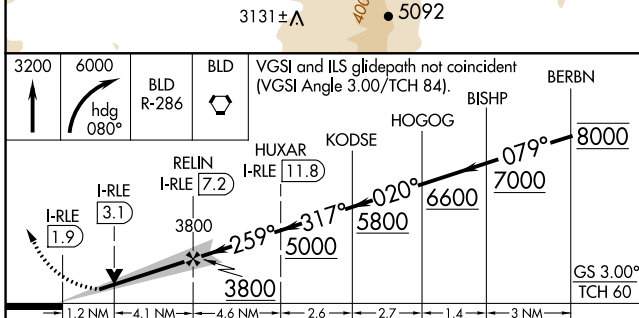
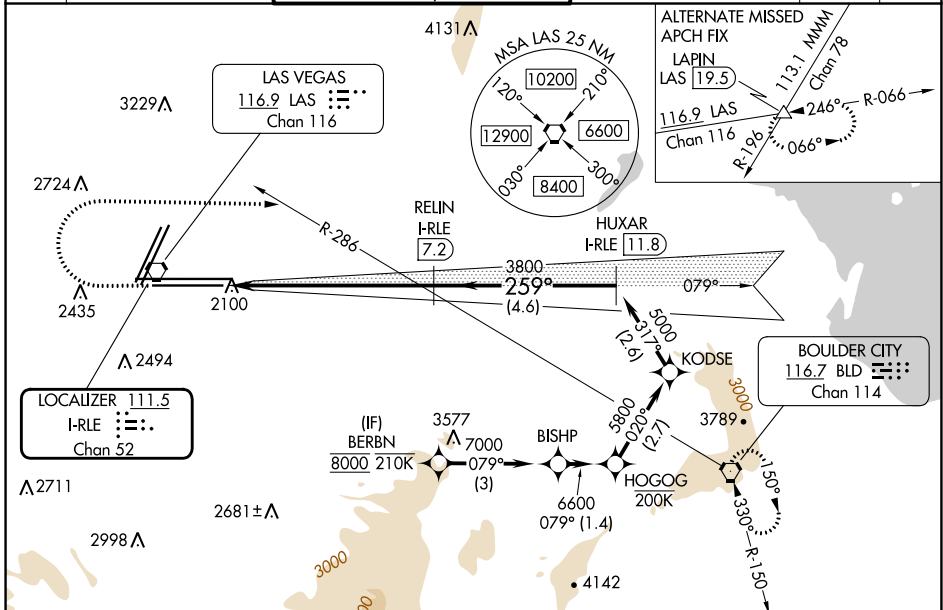
LOC/DME I-RLE 111.5 Chan 52	APP CRS 259°	Rwy Idg 26L 10526 26R 12638 TDZE 2069 2067 Apt Elev 2181 2181
-------------------------------------------------	------------------------	-------------------------------------------------------------------------------------------------------------

ILS Y or LOC Y RWY 26L

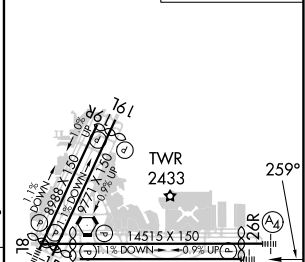
HARRY REID INTL (LAS)

RNP APCH - GPS. DME required.	MALSF Rwy 26L 	MALS Rwy 26R 	MISSED APPROACH: Climb to 3200 then climbing right turn to 6000 heading 080° and on BLD R-286 to BLD VORTAC and hold, continue climb-in-hold to 6000.
<p>⚠ Inop table does not apply to S-ILS 26L or Sidestep 26R. For inop ALS increase S-LOC 26L Cats C and D visibility to 1 1/8 SM.</p>			

D-ATIS 132.4	LAS VEGAS APP CON 125.025 379.15 (West) 119.775 282.2 (East)	LAS VEGAS TOWER 118.75 257.8 (Rwy 1L/19R, 1R/19L) 119.9 257.8 (Rwy 8L/26R, 8R/26L)	GND CON 121.1 270.8 E of 1R/19L 121.9 254.3 W of 1L/19R	CLNC DEL 118.0	CPDLC
------------------------	----------------------------------------------------------------------------------	--------------------------------------------------------------------------------------------------------	-----------------------------------------------------------------------------	--------------------------	-------



ELEV 2181	D	TDZE 26L 2069 TDZE 26R 2067
-----------	----------	--------------------------------



CATEGORY	A	B	C	D
S-ILS 26L	2269-3/4 200 (100-3/4)			
S-LOC 26L	2520-3/4	451 (400-3/4)	2520-1	451 (400-1)
SIDESTEP 26R	2560-1	493 (400-1)	2560-1 1/2 493 (400-1 1/2)	2560-2 493 (400-2)
CIRCLING	3020-1 1/4 839 (900-1 1/4)	3060-1 1/4 879 (900-1 1/4)	3100-2 3/4 919 (1000-2 3/4)	3540-3 1359 (1400-3)

MIRL Rwy 1R-19L
REIL Rws 1R, 8R, 19L and 19R
HIRL Rws 1L-19R, 8L-26R and 8R-26L

SW-4, 31 OCT 2024 to 28 NOV 2024

SW-4, 31 OCT 2024 to 28 NOV 2024