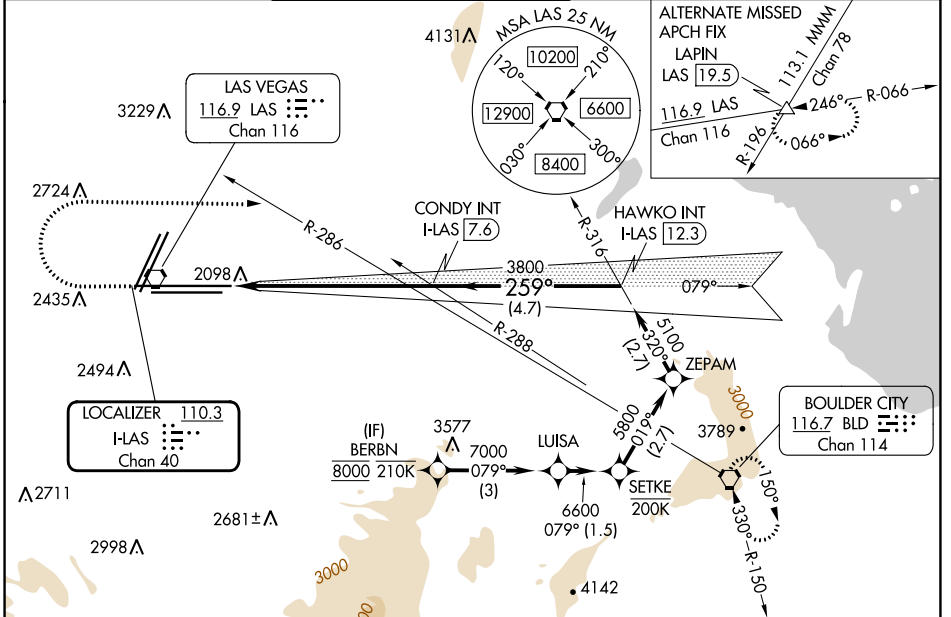


| | | |
|---|------------------------|---|
| LOC/DME FAS 110.3 Chan 40 | APP CRS 259° | Rwy Idg 26R 12638 26L 10526 TDZE 2067 2069 Apt Elev 2181 2181 |
|---|------------------------|---|

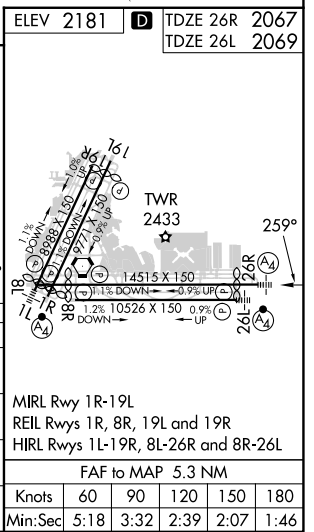
ILS Y or LOC Y RWY 26R

HARRY REID INTL (LAS)

| | | | | | | |
|---|--|--|---------------|---|--------------------------|-------|
| RNP APCH - GPS. | | MALS Rwy 26R | MALSF Rwy 26L | MISSED APPROACH: Climb to 3200 then climbing right turn to 6000 heading 080° and on BLD R-286 to BLD VORTAC and hold, continue climb-in-hold to 6000. | | |
| <p>▼ Inop table does not apply to Sidestep 26L. For inop ALS, increase S-ILS-26R all Cats visibility to ½ SM.</p> | | | | | | |
| D-ATIS 132.4 | LAS VEGAS APP CON 125.025 379.15 (West) 119.775 282.2 (East) | LAS VEGAS TOWER 118.75 257.8 (Rwy 1L/19R, 1R/19L) 119.9 257.8 (Rwy 8L/26R, 8R/26L) | | GND CON 121.1 270.8 E of 1R/19L 121.9 254.3 W of 1L/19R | CLNC DEL 118.0 | CPDLC |



| | | | | | | |
|--|----------------------|-----------|---|-------|--|---|
| 3200 | 6000 | BLD R-286 | VGSI and ILS glidepath not coincident (VGSI Angle 3.00/TCH 84). | BERBN | | |
| | | | | | | |
| <p>HAWKO INT I-LAS [12.3] ZEPAM SETKE LUISA BERBN</p> <p>CONDY INT I-LAS [7.6] HAWKO INT I-LAS [12.3]</p> <p>I-LAS [2.3] I-LAS [3.6] I-LAS [7.6]</p> <p>3800 5100 5800 6600 7000 8000</p> <p>079° 019° 079°</p> <p>1.4 NM 4 NM 4.7 NM 2.7 2.7 1.5 3 NM</p> | | | | | | |
| CATEGORY | A | | B | | C | D |
| S-ILS 26R | 2334-¾ | | 267 (200-¾) | | | |
| S-LOC 26R | 2560-¾ | | 493 (400-¾) | | 2560-1½ 493 (400-1½) | |
| SIDESTEP 26L | 2560-1 | | 491 (400-1) | | 2560-2 491 (400-2) | |
| CIRCLING | 3020-1¼ 839 (900-1¼) | | 3060-1¼ 879 (900-1¼) | | 3100-2¾ 919 (1000-2¾) 3540-3 1359 (1400-3) | |



SW-4, 31 OCT 2024 to 28 NOV 2024

SW-4, 31 OCT 2024 to 28 NOV 2024