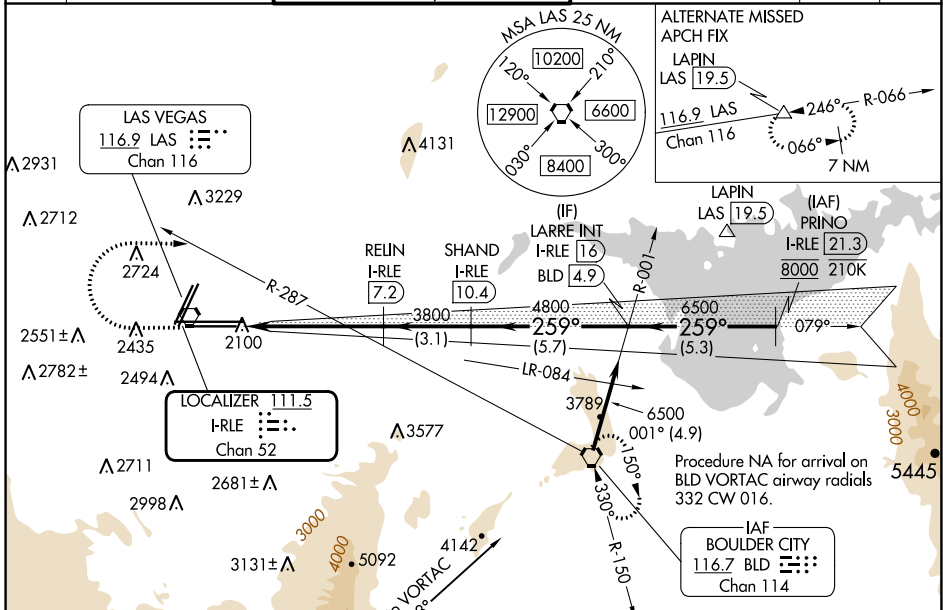


LOC/DME I-RLE 111.5 Chan 52	APP CRS 259°	Rwy Idg 10526 TDZE 2069 Apt Elev 2181	26L 12638	26R 2067 2181
---	------------------------	---	----------------------------	--

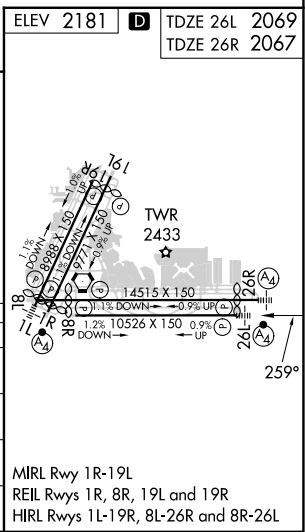
ILS Z or LOC Z RWY 26L

HARRY REID INTL (LAS)

DME required.		MALS F Rwy 26L		MALS Rwy 26R		MISSED APPROACH: Climb to 3200 then climbing right turn to 6000 heading 080° and on BLD R-287 to BLD VORTAC and hold, continue climb-in-hold to 6000.	
<p>▼ Inop table does not apply to S-ILS 26L and Sidestep 26R. For inop ALS, increase S-LOC 26L Cat C/D/E visibility to 1 3/8 SM.</p>		<p>▲</p>		<p>▲</p>			
D-ATIS 132.4	LAS VEGAS APP CON 125.025 379.15 (West) 119.775 282.2 (East)	LAS VEGAS TOWER 118.75 257.8 (Rwy 1L/19R, 1R/19L) 119.9 257.8 (Rwy 8L/26R, 8R/26L)		GND CON 121.1 270.8 E of 1R/19L 121.9 254.3 W of 1L/19R		CLNC DEL 118.0	CPDLC



ELEV 2181	D	TDZE 26L 2069	TDZE 26R 2067
3200	6000	BLD R-287	BLD
VGSI and ILS glidepath not coincident (VGSI Angle 3.00/TCH 84).			
<p>↑ hdg 080°</p>		RELIN I-RLE 7.2	SHAND I-RLE 10.4
<p>RELIN I-RLE 3.1</p>		LARRE INT I-RLE 16	PRINO I-RLE 21.3
<p>I-RLE 1.9</p>		BLD 4.9	8000
<p>1.2 NM</p>		3800	6500
<p>4.1 NM</p>		4800	8000
<p>3.1 NM</p>		3800	6500
<p>5.7 NM</p>		4800	8000
<p>5.3 NM</p>		3800	6500
GS 3.00° TCH 60			
CATEGORY	A	B	C
S-ILS 26L	2269-3/4 200 (100-3/4)		
S-LOC 26L	2520-3/4	451 (400-3/4)	2520-1 451 (400-1)
SIDESTEP 26R	2560-1	493 (400-1)	2560-1 1/2 493 (400-1 1/2)
CIRCLING	3020-1 1/4 839 (900-1 1/4)	3060-1 1/4 879 (900-1 1/4)	3100-2 3/4 919 (1000-2 3/4)
			2560-2 493 (400-2)
			3540-3 1359 (1400-3)



SW-4, 31 OCT 2024 to 28 NOV 2024

SW-4, 31 OCT 2024 to 28 NOV 2024