

(JOHKR4.JOHKR) 24305

JOHKR FOUR DEPARTURE (RNAV) Transition Routes

AL-662 (FAA)
Transition Routes

HARRY REID INTL (LAS)
LAS VEGAS, NEVADA

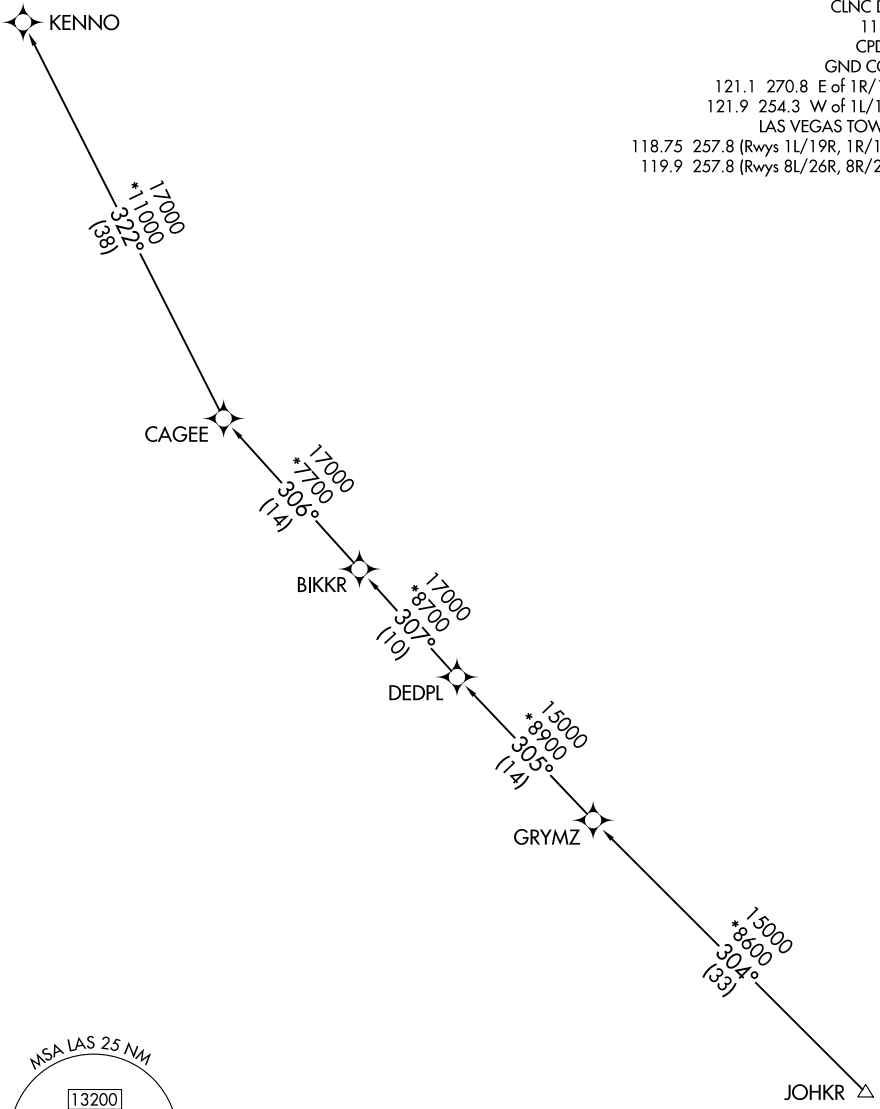
RNAV 1 - DME/DME/IRU or GPS.
RADAR required for non-GPS equipped aircraft.

TOP ALTITUDE:
FL190

LAS VEGAS DEP CON
125.9 307.25
D-ATIS
132.4
CLNC DEL
118.0
CPDLC
GND CON
121.1 270.8 E of 1R/19L
121.9 254.3 W of 1L/19R
LAS VEGAS TOWER
118.75 257.8 (Rwys 1L/19R, 1R/19L)
119.9 257.8 (Rwys 8L/26R, 8R/26L)

SW-4, 31 OCT 2024 to 28 NOV 2024

SW-4, 31 OCT 2024 to 28 NOV 2024



(CONTINUED ON FOLLOWING PAGE)

NOTE: Chart not to scale.

JOHKR FOUR DEPARTURE (RNAV) Transition Routes

(JOHKR4.JOHKR) 31OCT24

LAS VEGAS, NEVADA
HARRY REID INTL (LAS)