

APP CRS	Rwy ldg 10526
079°	TDZE 2157
	Apt Elev 2181

RNAV (RNP) RWY 8R

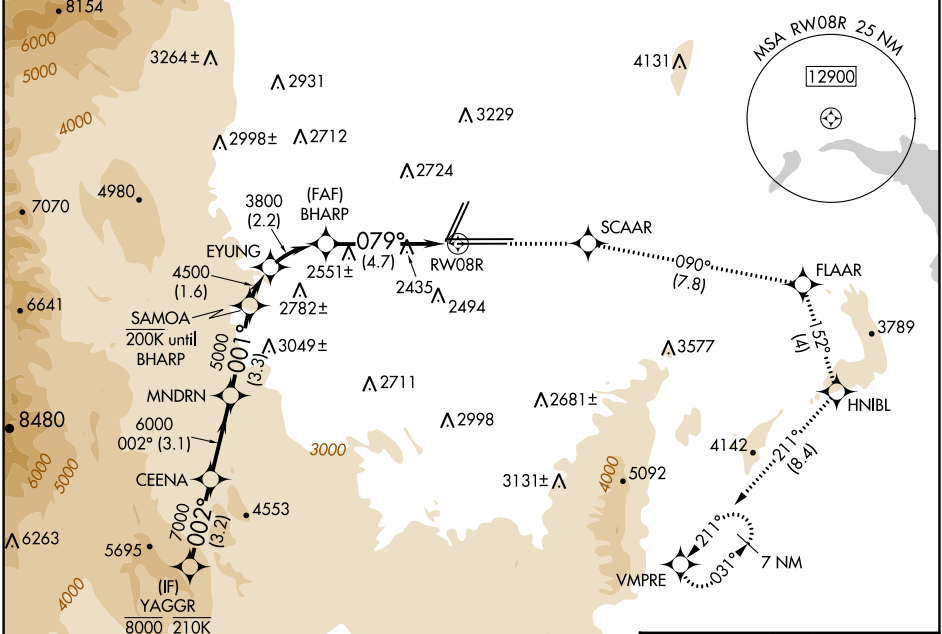
HARRY REID INTL (LAS)

RNP AR APCH. RF required.

MISSED APPROACH: Climb to 7000 on the RNAV missed approach route to VMPRE and hold, continue climb-in-hold to 7000.

▼ For uncompensated Baro-VNAV systems, procedure NA below 0°C or above 54°C.

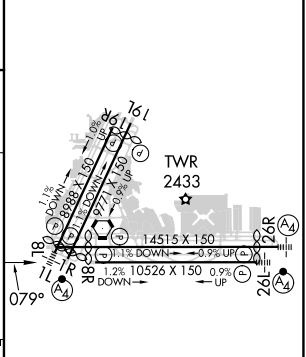
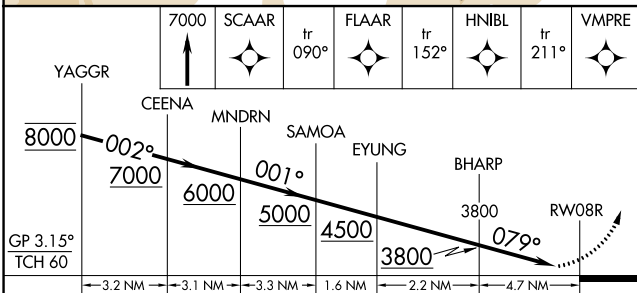
D-ATIS	LAS VEGAS APP CON	LAS VEGAS TOWER	GND CON	CLNC DEL	CPDLC
132.4	125.025 379.15 (West) 119.775 282.2 (East)	118.75 257.8 (Rwy 1L/19R, 1R/19L) 119.9 257.8 (Rwy 8L/26R, 8R/26L)	121.1 270.8 E of 1R/19L 121.9 254.3 W of 1L/19R	118.0	



SW-4, 31 OCT 2024 to 28 NOV 2024

SW-4, 31 OCT 2024 to 28 NOV 2024

ELEV 2181	D TDZE 2157
-----------	--------------------



GP 3.15°	TCH 60	→ 3.2 NM →	→ 3.1 NM →	→ 3.3 NM →	→ 1.6 NM →	→ 2.2 NM →	→ 4.7 NM →
CATEGORY	A	B	C	D			
RNP 0.10 DA	2544-1 1/8		387 (400-1 1/8)				
RNP 0.30 DA	2613-1 3/8		456 (500-1 3/8)				

AUTHORIZATION REQUIRED

MIRL Rwy 1R-19L
REIL Rwsy 1R, 8R, 19L and 19R
HIRL Rwsy 1L-19R, 8L-26R and 8R-26L