

WAAS CH 63002 W22A	APP CRS 219°	Rwy Idg 6153 TDZE 17 Apt Elev 18
--	------------------------	---

RNAV (GPS) RWY 22

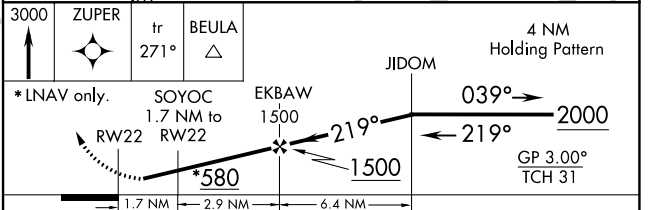
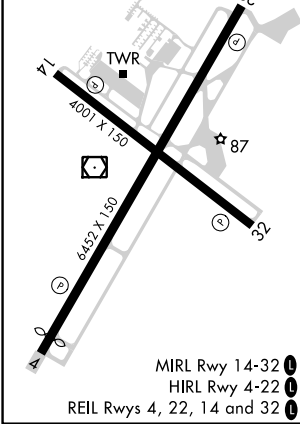
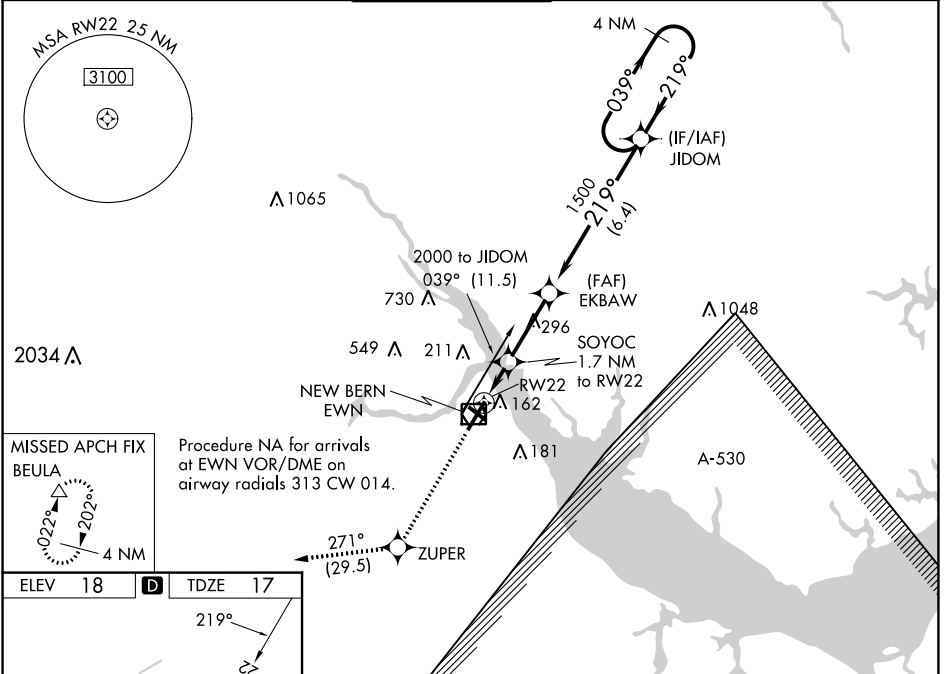
COASTAL CAROLINA RGNL (EWN)

RNP APCH.

⚠ Rwy 14, 32 helicopter visibility reduction below 1 SM NA. Rwy 22 helicopter visibility reduction below 3/4 SM NA. Circling Rwy 14, 32 NA at night. Baro-VNAV NA when using Cherry Point altimeter setting. For uncompensated Baro-VNAV systems, LNAV/VNAV NA below -15°C (5°F) or above 54°C (130°F). When local altimeter setting not received, use Cherry Point altimeter setting; increase all DA 32 feet and all MDA 40 feet. Increase LPV and LNAV/VNAV visibility 1/2 SM, and Circling Cat C/D visibility 1/4 SM.

MISSED APPROACH: Climb to 3000 direct ZUPER and on track 271° to BEULA and hold.

ASOS 118.525	CHERRY POINT APP CON 119.35 374.9	NEW BERN TOWER ★ 124.25 (CTAF) 0	GND CON 121.7	CLNC DEL 121.7	CLNC DEL 120.525 (when twr closed)
------------------------	---	---	-------------------------	--------------------------	---



CATEGORY	A	B	C	D
LPV DA		269-7/8	252 (300-7/8)	
LNAV/VNAV DA		376-1 1/4	359 (400-1 1/4)	
LNAV MDA	480-1	463 (500-1)	480-1 3/8	463 (500-1 3/8)
C CIRCLING	480-1 462 (500-1)	520-1 502 (600-1)	600-1 1/2 582 (600-1 1/2)	860-2 3/4 842 (900-2 3/4)

SE-2, 31 OCT 2024 to 28 NOV 2024

SE-2, 31 OCT 2024 to 28 NOV 2024