

CAMARILLO SIX DEPARTURE

SW-3, 31 OCT 2024 to 28 NOV 2024

TAKEOFF MINIMUMS

- Rwy 7: 2000-5 or Standard with minimum climb of 320' per NM to 4100.
- Rwy 25: 2100-5 or Standard with a minimum climb of 300' per NM to 4100.

NOTE: Aircraft proceeding on FILLMORE TRANSITION- If not at MCA/MEA prior to reaching FIM VORTAC, continue climbing in depicted holding pattern to MCA or assigned altitude.

NOTE: RADAR required.

TOP ALTITUDE:
8000

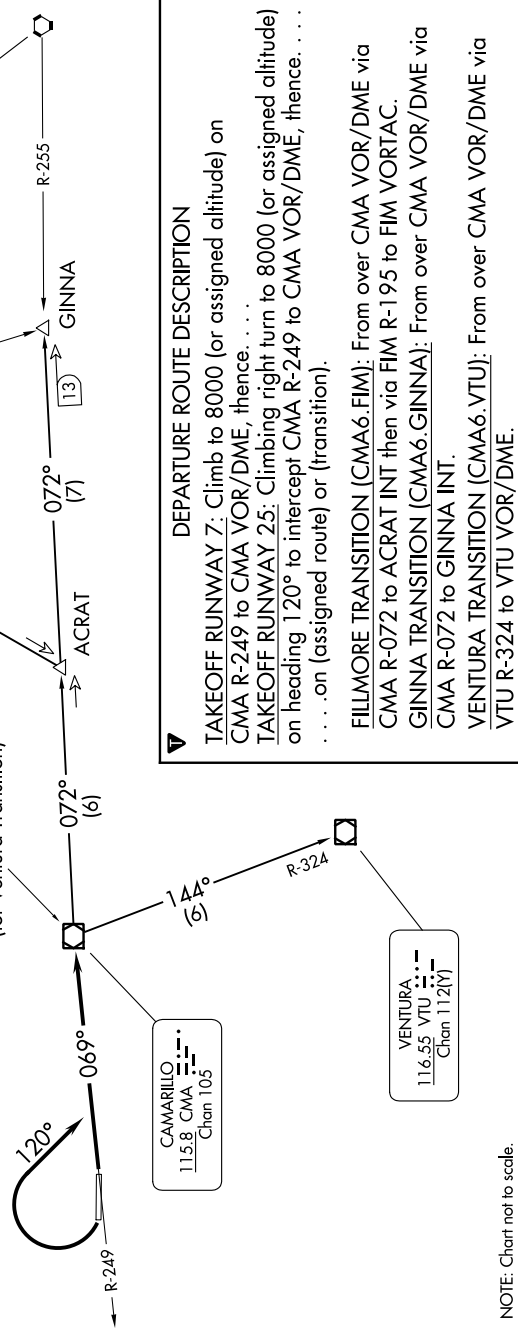
ATIS 118.05
GND CON 121.9
OXNARD TOWER ★ 134.95 (CTAF) 257.8
POINT MUGU DEP CON ★ 124.7 335.5
LOS ANGELES CENTER 135.5 327.1

VAN NUYS
113.1 VNY
Chan 78

FILLMORE
112.5 FIM
Chan 72

CAMARILLO
115.8 CMA
Chan 105

VENTURA
116.55 VTU
Chan 112(Y)



DEPARTURE ROUTE DESCRIPTION

TAKEOFF RUNWAY 7: Climb to 8000 (or assigned altitude) on CMA R-249 to CMA VOR/DME, thence. . . .

TAKEOFF RUNWAY 25: Climbing right turn to 8000 (or assigned altitude) on heading 120° to intercept CMA R-249 to CMA VOR/DME, thence. . . . on (assigned route) or (transition).

FILLMORE TRANSITION (CMA6.FIM): From over CMA VOR/DME via CMA R-072 to ACRAV INT then via FIM R-195 to FIM VORTAC.

GINNA TRANSITION (CMA6.GINNA): From over CMA VOR/DME via CMA R-072 to GINNA INT.

VENTURA TRANSITION (CMA6.VTU): From over CMA VOR/DME via VTU R-324 to VTU VOR/DME.

NOTE: Chart not to scale.

CAMARILLO SIX DEPARTURE

SW-3, 31 OCT 2024 to 28 NOV 2024