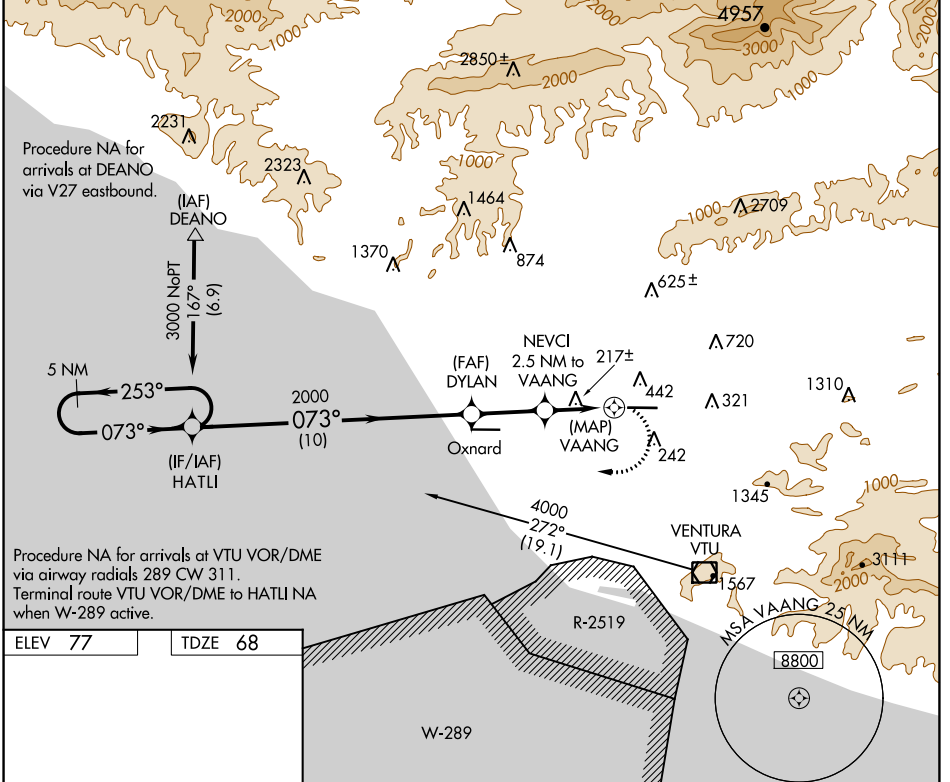


APP CRS	Rwy Idg	<b>6013</b>
<b>073°</b>	TDZE	<b>68</b>
	Apt Elev	<b>77</b>

# RNAV (GPS) RWY 8

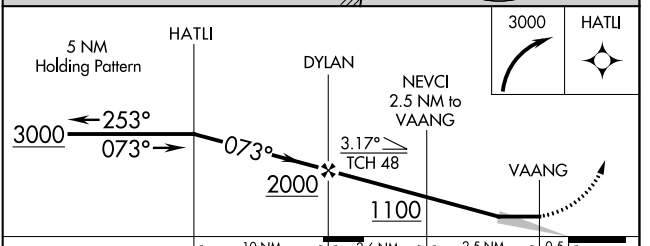
CAMARILLO (CMA)

<p><b>⚠</b> Circling NA north of Rwy 8-26. DME/DME RNP-0.3 NA. When local altimeter setting not received, use Oxnard altimeter setting and increase all MDA 20 feet.</p>		<p>MISSED APPROACH: Climbing right turn to 3000 direct HATLI and hold.</p>				
ATIS	POINT MUGU APP CON *	CAMARILLO TOWER *	GND CON	CLNC DEL	POINT MUGU CLNC DEL	UNICOM
<b>126.025</b>	<b>124.7 335.5</b>	<b>128.2 (CTAF) 0 269.4</b>	<b>121.8</b>	<b>121.8</b>	<b>120.75 279.55</b>	<b>122.95</b>



ELEV 77	TDZE 68
---------	---------

REIL Rwys 8 and 26 **Ⓛ**  
MIRL Rwy 8-26 **Ⓛ**



CATEGORY	A	B	C	D
LNAV MDA	840-1 772 (800-1)	840-1¼ 772 (800-1¼)	840-2½ 772 (800-2½)	772 (800-2½)
CIRCLING	840-1 763 (800-1)	840-1¼ 763 (800-1¼)	840-2½ 763 (800-2½)	1100-3 1023 (1100-3)

SW-3, 31 OCT 2024 to 28 NOV 2024

SW-3, 31 OCT 2024 to 28 NOV 2024