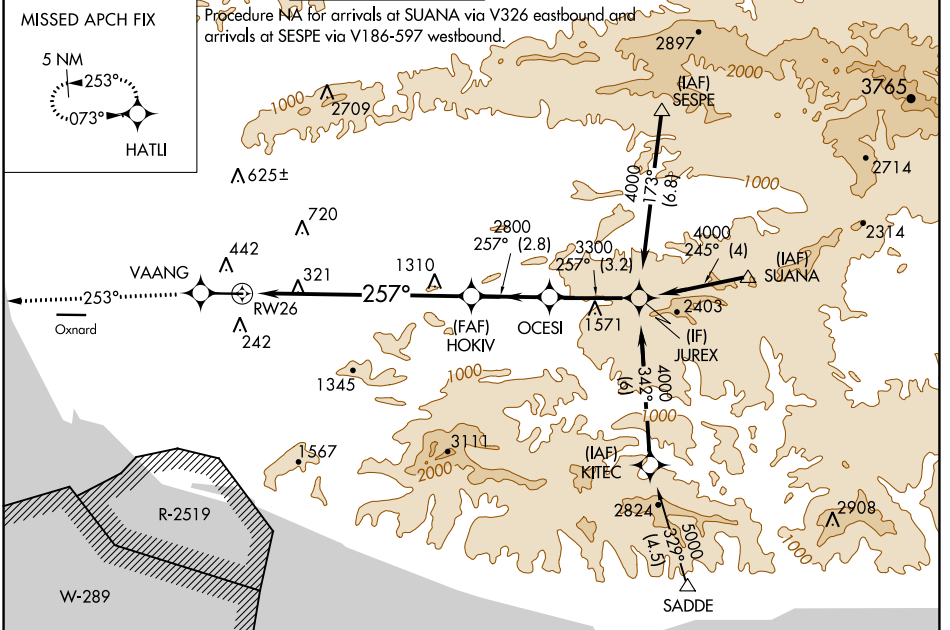


WAAS CH <b>58202</b> <b>W26A</b>	APP CRS <b>257°</b>	Rwy Idg TDZE Apt Elev	<b>6013</b> <b>77</b> <b>77</b>
--	------------------------	-----------------------------	---------------------------------------

# RNAV (GPS) Z RWY 26

CAMARILLO (CMA)

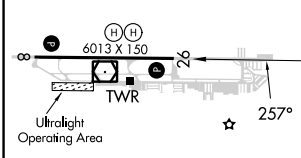
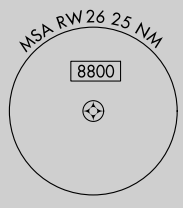
<b>V</b> DME/DME RNP -0.3 NA. If local altimeter setting not received, use Oxnard altimeter setting and increase DA 18 feet.	MISSED APPROACH: Climb to 3000 direct VAANG and via 253° track to HATLI and hold.					
ATIS <b>126.025</b>	POINT MUGU APP CON * <b>124.7 335.5</b>	CAMARILLO TOWER * <b>128.2 (CTAF) 0 269.4</b>	GND CON <b>121.8</b>	CLNC DEL <b>121.8</b>	POINT MUGU CLNC DEL <b>120.75 279.55</b>	UNICOM <b>122.95</b>



SW-3, 31 OCT 2024 to 28 NOV 2024

SW-3, 31 OCT 2024 to 28 NOV 2024

ELEV 77	TDZE 77
---------	---------



3000	VAANG	253° tr	HATLI	JUREX	Procedure Turn NA
				OCESI	
				HOKIV	
					4000
					3300
					2800
					257°
					GP 3.00° TCH 48
					8.2 NM
					2.8 NM
					3.2 NM
CATEGORY	A	B	C	D	
LPV DA		327-3/4	250 (300-3/4)		

REIL Rwy 8 and 26  
MIRL Rwy 8-26