

WAAS CH <b>86841</b> <b>W30A</b>	APP CRS <b>306°</b>	Rwy Idg TDZE Apt Elev	<b>3900</b> <b>657</b> <b>684</b>
--	------------------------	-----------------------------	---

# RNAV (GPS) RWY 30

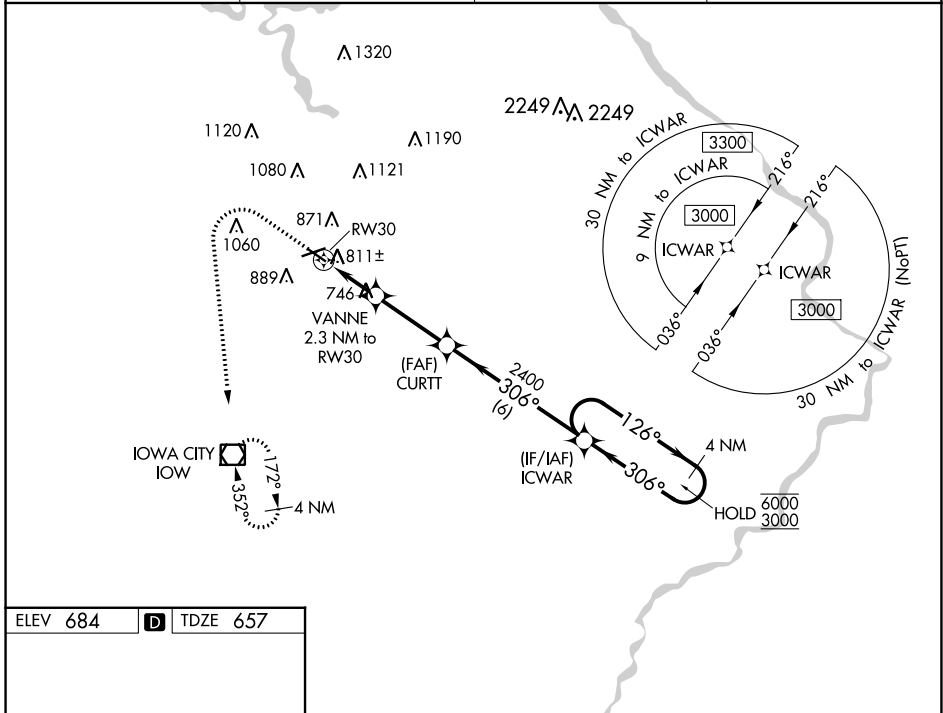
IOWA CITY MUNI (IOW)

RNP APCH - GPS.

**⚠** Rwy 30 helicopter visibility reduction below 1 SM NA. Rwy 30 procedure NA at night. Circling Rwy 12 NA at night. When local altimeter setting not received, use CID altimeter setting and increase all MDA 80 feet and LNAV visibility Cat C/D 1/8 SM and LP and Circling Cat C/D visibility 1/4 SM.

MISSED APPROACH: Climb to 1800 then climbing left turn to 3000 direct IOW VOR/DME and hold.

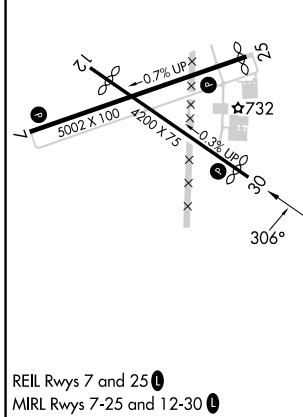
ASOS <b>128.075</b>	CEDAR RAPIDS APP CON * <b>119.7 266.8</b>	CLNC DEL <b>119.05</b>	UNICOM <b>122.8 (CTAF) 0</b>
------------------------	--	---------------------------	---------------------------------



NC-3, 31 OCT 2024 to 28 NOV 2024

NC-3, 31 OCT 2024 to 28 NOV 2024

ELEV 684	<b>D</b>	TDZE 657
----------	----------	----------



1800	3000	IOW	VGSI and descent angles not coincident (VGSI Angle 3.00/TCH 33).	ICWAR	4 NM Holding Pattern
↑	↪	☐			
				CURTT	126° → 6000 ← 306° 3000
				VANNE 2.3 NM to RW30	3.00° TCH 40
				RW30	2400
					1400
					2.3 NM
					3.1 NM
					6 NM
CATEGORY	A	B	C	D	
LP MDA	1000-1 343 (400-1)				
LNAV MDA	1080-1 423 (400-1)	1080-1¼ 423 (400-1¼)			
<b>C</b> CIRCLING	1220-1 536 (600-1)	1240-1 556 (600-1)	1440-2¼ 756 (800-2¼)	1440-2½ 756 (800-2½)	