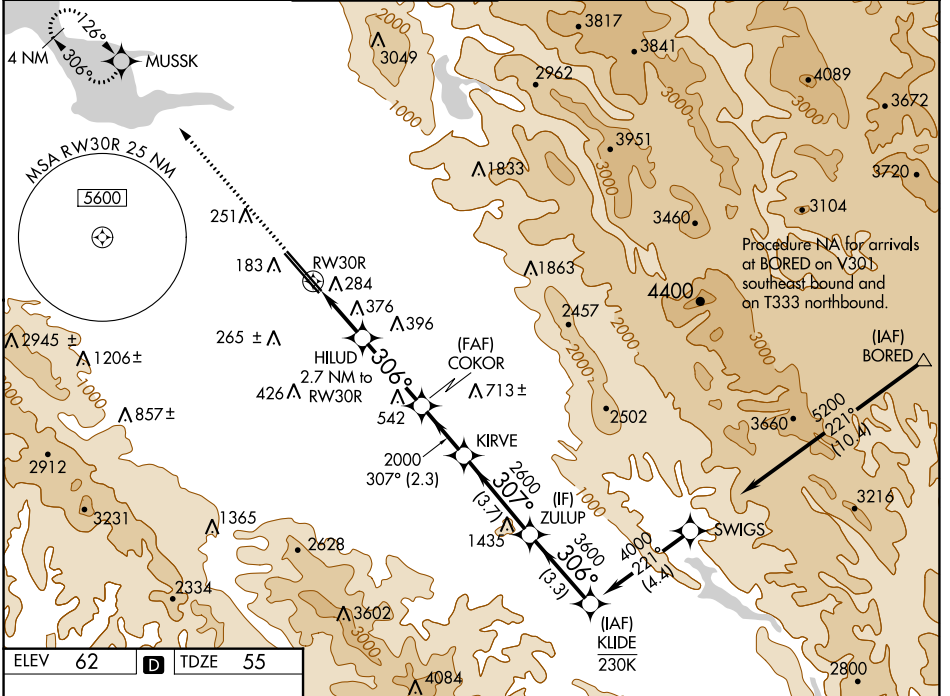


WAAS CH 72901 W30B	APP CRS 306°	Rwy Idg TDZE Apt Elev	7597 55 62
--	------------------------	-----------------------------	---------------------------------------

RNAV (GPS) Y RWY 30R

NORMAN Y MINETA SAN JOSE INTL (SJC)

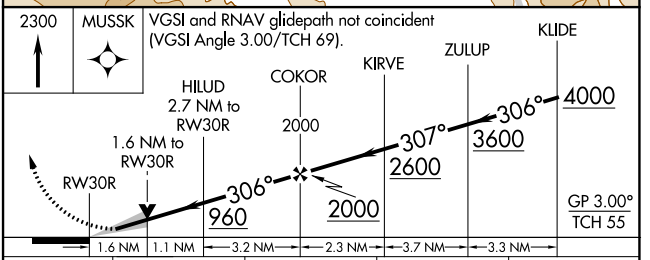
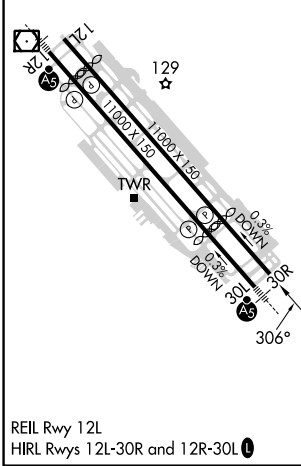
RNP APCH-GPS.		MISSED APPROACH: Climb to 2300 direct MUSSK and hold.			
▼ For uncompensated Baro-VNAV systems, LNAV/VNAV NA below -1°C or above 54°C.					
D-ATIS 126.95	NORCAL APP CON 120.1 290.25	SAN JOSE TOWER ★ 124.0 (CTAF) 257.6	GND CON 121.7	CLNC DEL 118.0	UNICOM 122.95



SW-2, 31 OCT 2024 to 28 NOV 2024

SW-2, 31 OCT 2024 to 28 NOV 2024

ELEV 62	D	TDZE 55
---------	----------	---------



CATEGORY	A	B	C	D
LPV DA		255-3/4	200 (200-3/4)	
LNAV/VNAV DA		541-13/8	486 (500-13/8)	
LNAV MDA	640-1	585 (600-1)	640-13/4	585 (600-13/4)
C CIRCLING	640-1 578 (600-1)	700-1 638 (700-1)	700-13/4 638 (700-13/4)	700-2 638 (700-2)