

WAAS CH <b>90201</b> <b>W22A</b>	APP CRS <b>226°</b>	Rwy Idg TDZE Apt Elev	<b>6604</b> <b>980</b> <b>980</b>
--	------------------------	-----------------------------	---

# RNAV (GPS) RWY 22

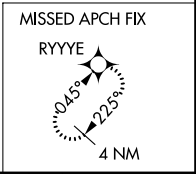
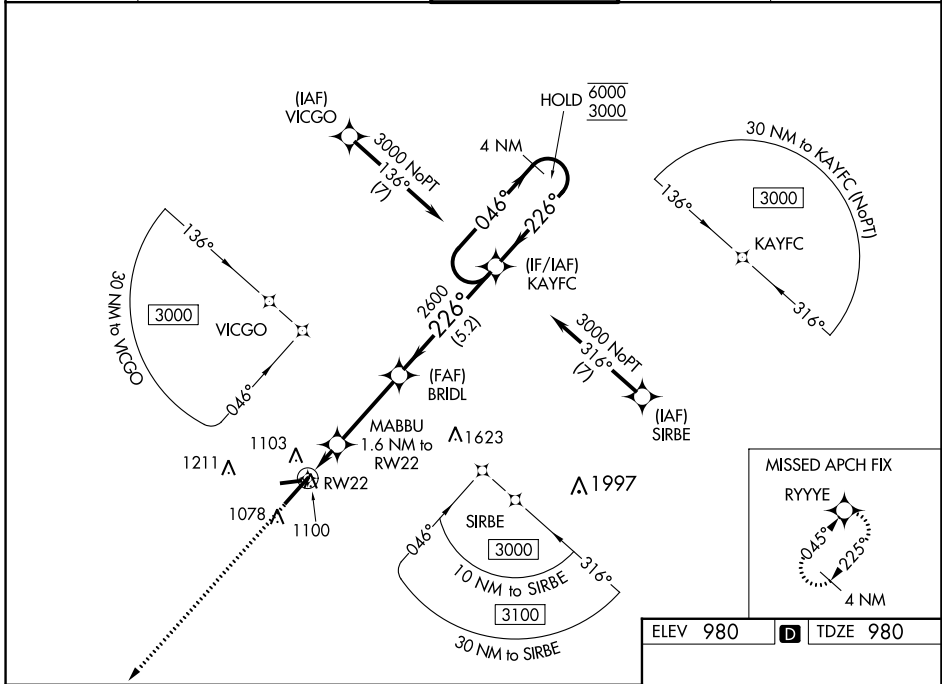
BLUE GRASS (LEX)

RNP APCH - GPS.

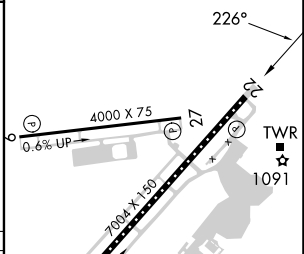
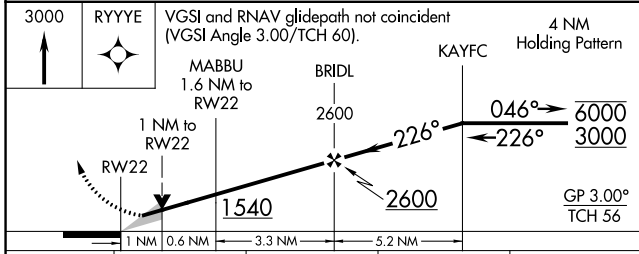
**⚠** For uncompensated Baro-VNAV systems, LNAV/VNAV NA below -13°C or above 54°C.

MISSED APPROACH: Climb to 3000 direct RYYYE and hold.

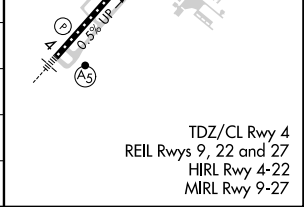
ATIS <b>126.3</b>	LEXINGTON APP CON <b>120.15 259.3</b> (040°-220°) <b>120.75 298.9</b> (221°-039°)	LEXINGTON TOWER <b>119.1 257.8</b>	GND CON <b>121.9</b>	CLNC DEL <b>132.35</b>
----------------------	---	---------------------------------------	-------------------------	---------------------------



ELEV 980	<b>D</b> TDZE 980
----------	-------------------



CATEGORY	A	B	C	D
LPV DA		1180-3/4	200 (200-3/4)	
LNAV/VNAV DA		1261-7/8	281 (300-7/8)	
LNAV MDA		1360-1	380 (400-1)	
<b>C</b> CIRCLING	1420-1 440 (500-1)	1440-1 460 (500-1)	1520-1 1/2 540 (600-1 1/2)	1600-2 620 (700-2)



SE-1, 31 OCT 2024 to 28 NOV 2024

SE-1, 31 OCT 2024 to 28 NOV 2024