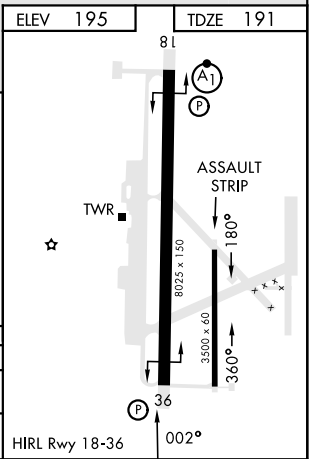
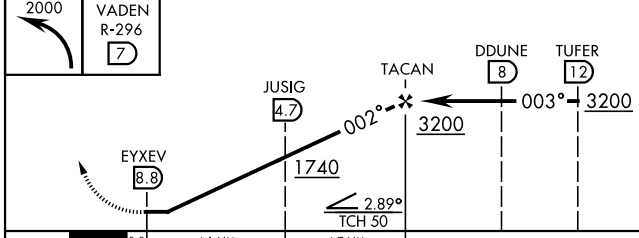
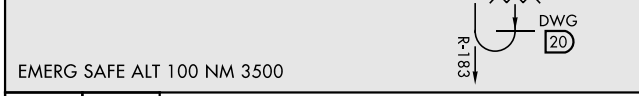
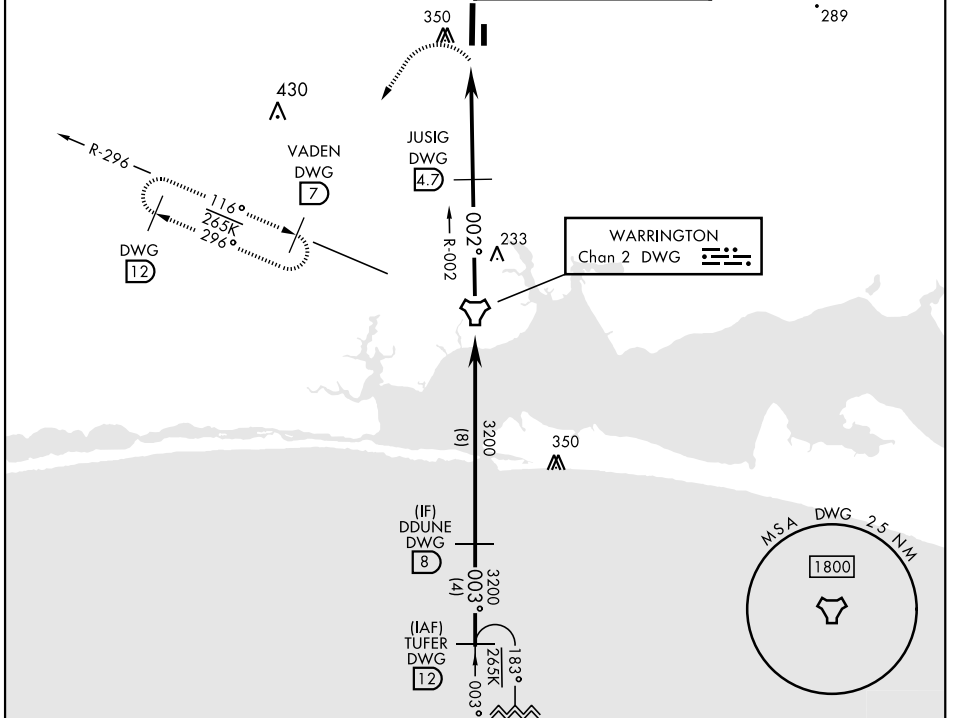


TACAN Z RWY 36

TACAN DWG Chan 2	APCH CRS 002°	Rwy Idg TDZE Arprt Elev 8025 191 195	AL-699 [USAF]	DUKE FLD (EGLIN AF AUX NR3)	(KEGI)
----------------------------	-------------------------	--	---------------	-----------------------------	--------

MISSED APPROACH: Climbing left turn to 2000 direct DWG R-296/7 DME (VADEN) and hold. Missed Approach requires use of RNAV or ATC RADAR monitoring.

ATIS ★ 244.575	EGLIN APP CON 125.1 281.45 (271°-089°) 132.1 360.6 (090°-270°)	TOWER ★ 133.2 290.425	GND CON 123.25 251.125
--------------------------	--	---------------------------------	----------------------------------



CATEGORY	A	B	C	D	E
S-36	600/55 409 (500-1)		600/60 409 (500-1½)		
CIRCLING	660-1 465 (500-1)	700-1 505 (600-1)	700-1½ 505 (600-1½)	760-2 565 (600-2)	780-2 585 (600-2)

TACAN Z RWY 36

SE-3, 31 OCT 2024 to 28 NOV 2024

SE-3, 31 OCT 2024 to 28 NOV 2024