

| | | |
|--|------------------------|---|
| WAAS CH 56405 W25A | APP CRS 254° | Rwy Idg TDZE 812 Apt Elev 813 |
|--|------------------------|---|

RNAV (GPS) RWY 25

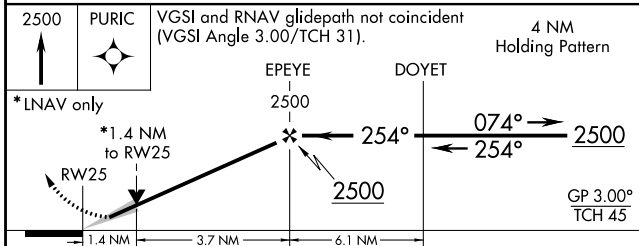
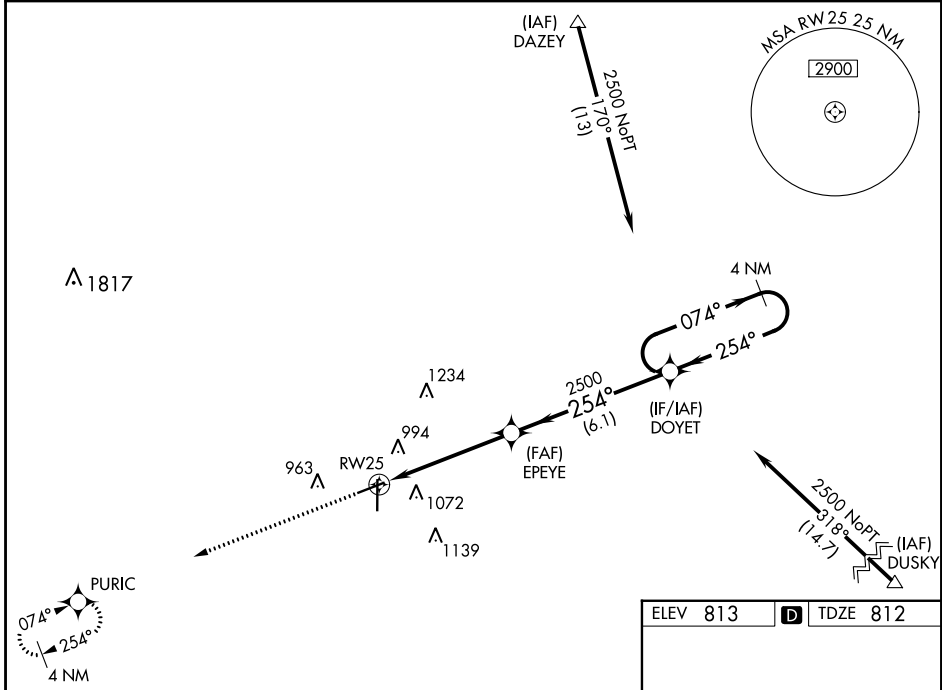
FINDLAY (F'DY)

RNP APCH-GPS.

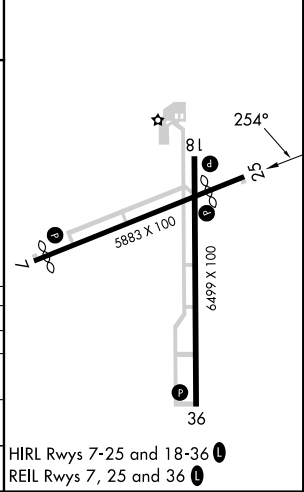
⚠ For uncompensated Baro-VNAV systems, LNAV/VNAV NA below -16°C or above 47°C. Baro-VNAV and VDP NA when using Lima Allen County altimeter setting. When local altimeter setting not received, use Lima Allen County altimeter setting; increase all DAs/MDAs 80 feet; increase LPV visibility 1/8 SM all Cats; increase LNAV Cat C/D and Circling Cat C/D visibility 1/4 SM. Circling Rwy 7 NA at night.

MISSED APPROACH: Climb to 2500 direct PURIC and hold.

| | | |
|-----------------------|---------------------------------------|-----------------------------------|
| ASOS 132.85 | TOLEDO APP CON 120.8 317.55 | UNICOM 122.725 (CTAF) 0 |
|-----------------------|---------------------------------------|-----------------------------------|



| | |
|----------|-------------------|
| ELEV 813 | D TDZE 812 |
|----------|-------------------|



| CATEGORY | A | B | C | D |
|--------------|--------|-------------|-------------------------|-------------------------|
| LPV DA | 1116-1 | | 304 (400-1) | |
| LNAV/VNAV DA | 1411-2 | | 599 (600-2) | |
| LNAV MDA | 1280-1 | 468 (500-1) | 1280-1½ 468 (500-1½) | 1280-1½ 468 (500-1½) |
| CIRCLING | 1440-1 | 627 (700-1) | 1440-1¾ 627 (700-1¾) | 1540-2¼ 727 (800-2¼) |

HIRL Rws 7-25 and 18-36 0
REIL Rws 7, 25 and 36 0