

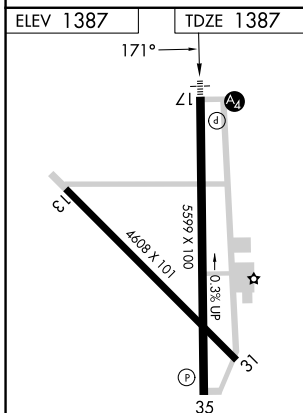
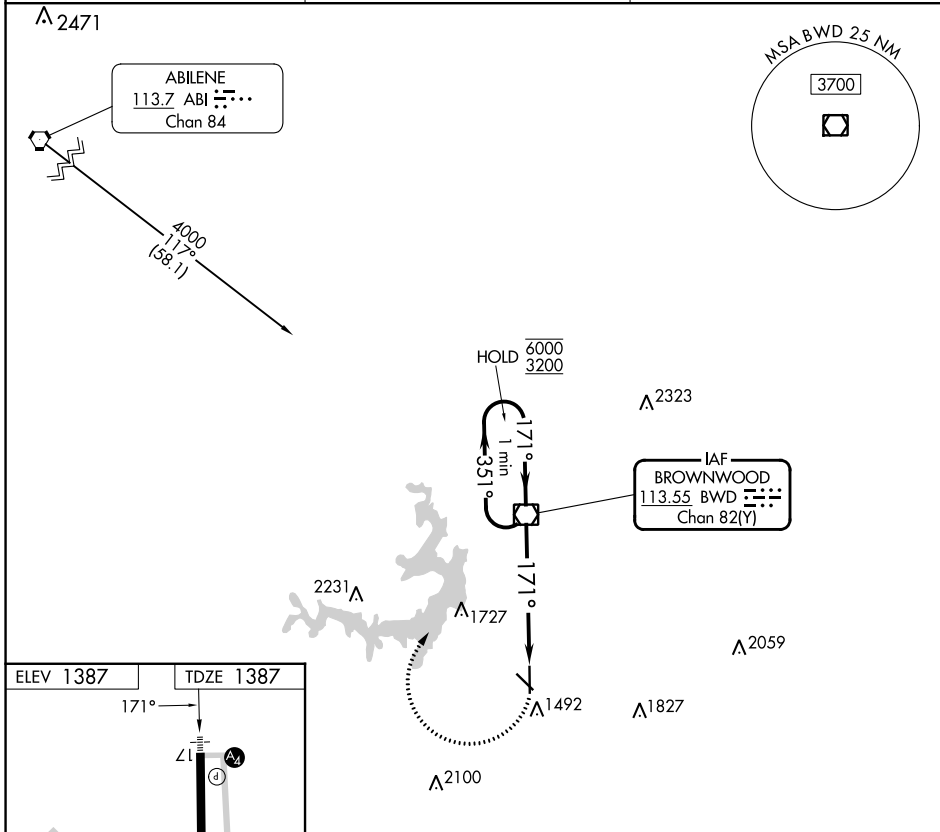
VOR/DME BWD <b>113.55</b> Chan <b>82(Y)</b>	APP CRS <b>171°</b>	Rwy Idg TDZE <b>1387</b> Apt Elev <b>1387</b>
---	------------------------	---

# VOR RWY 17

BROWNWOOD RGNL (BWD)

<p><b>⚠</b> Rwy 17 helicopter visibility reduction below <math>\frac{3}{4}</math> SM NA. For inop ALS, increase VOR Cat A and D visibility to <math>\frac{1}{8}</math> SM.</p>	<p>MALS </p>	<p>MISSED APPROACH: Climbing right turn to 4000 direct BWD VOR/DME and hold, continue climb-in-hold to 4000.</p>
--	--------------	--

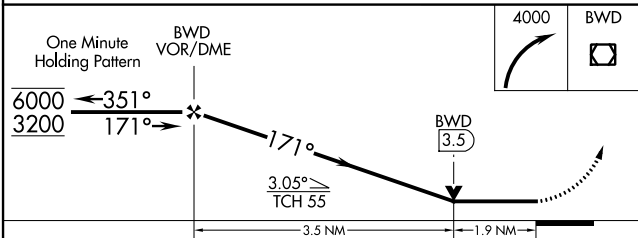
AWOS-3 <b>118.325</b>	FORT WORTH CENTER <b>127.45 290.3</b>	UNICOM <b>122.8 (CTAF)</b>
--------------------------	--	-------------------------------



MIRL Rwys 13-31 and 17-35 **Ⓛ**

FAF to MAP 5.4 NM

Knots	60	90	120	150	180
Min:Sec	5:24	3:36	2:42	2:10	1:48



CATEGORY	A	B	C	D
S-17	2060- $\frac{3}{4}$	673 (700- $\frac{3}{4}$ )	2060- $\frac{1}{4}$	673 (700- $\frac{1}{4}$ )
CIRCLING	2060-1	673 (700-1)	2060-2 673 (700-2)	2160-2 $\frac{1}{2}$ 773 (800-2 $\frac{1}{2}$ )

SC-3, 31 OCT 2024 to 28 NOV 2024

SC-3, 31 OCT 2024 to 28 NOV 2024